

UNC Asheville



Office of  
Institutional Research,  
Effectiveness, and Planning

Fact  
Book



UNIVERSITY *of* NORTH CAROLINA  
ASHEVILLE

# UNC Asheville Fact Book 2018-19

Institutional Research, Effectiveness & Planning  
One University Heights  
Asheville, NC 28804-8510  
(828) 251-6619

C. Michael Gass, Vice Chancellor for Strategy and Information Management  
Harold Thomas, Director of Institutional Research  
Amanda Werts, Director of Institutional Effectiveness  
Deaver Traywick, Director of Institutional Planning and Accreditation Support  
Parker Beaman, Database Application Programmer  
Peter Lewis, Senior Research Associate  
Allie Ellenbogen, Survey and Assessment Analyst  
Carina Sessions, Course Evaluation Support Specialist  
Lindsey Kuykendall, Survey and Assessment Coordinator

# Table of Contents

I. Students and Alumni	Page	Table	Figure
<u>Admissions</u>			
Fall Applications, Acceptances and Enrollments by Sex	5	1	
Out-of-State Freshman Applications, Acceptances and Enrollments by State	6	2	
Distribution of New Freshman Enrollments by Region	8		1
New Freshman Admission Scores by Residence Status	9	3	
Fall Freshman SAT Scores and H.S. Rank Distributions	10		2
<u>Enrollments and Retention</u>			
Student Enrollment Demographic Profile (Res. + Ext. Credit Students)	11	4	
Student Enrollment Demographic Profile (Res. Credit Students Only)	12	5	
Student Enrollment Demographic Profile (Ext. Credit Students Only)	12	6	
Fall Enrolled Students by U.S. Region and State	13	7	
Enrolled Students by North Carolina Region and County	15	8	
Minority Presence: Fall Semesters	17	9	
Headcount by Race: Fall	17	10	
Distribution of Student Age by Class	18	11	
Parental Education Level of Undergraduate Degree-Seeking Students	18	12	
UNC System Undergraduate Student Demographic Comparisons	19	13	
Residence Halls and Number of Students Housed	19	14	
Commuter vs Residence Hall Students	20	15	
Summer School Headcount Enrollment by Class	20	16	
Summer School Headcount, FTE, and SCH Enrollment	21	17	
Distance Education Enrollment by Site	21	18	
Distance Education SCH by Funding Category	21	19	
New Fall Transfer Enrollments by Institution Type	22	20	
Source of New Undergraduate Transfer Students	23	21	
Retention of New Fall Entering Full-time Freshmen	24	22	
Retention of New Fall Entering Transfers	25	23	
Academic Program Inventory	26	24	
Enrollment by Major (Spring Semesters)	27	25	
Degrees Conferred by Academic Area and Major	28	26	
Average Undergraduate Class Size	29	27	

Programs	Page	Table	Figure
Grade Distribution by Course Level and Academic Year	30	28	
Weighted Average of All Grades Awarded by AY & Course Level	31		3
Intercollegiate Athletics	32	29	
<b>Financial Aid</b>			
Student Financial Aid by Source	33	30	
Students Receiving Financial Aid	34	31	
Intercollegiate Athletics Grants-In-Aid	35	32	
<b>Alumni</b>			
Current Residence of Alumni by US Region, State and Nation	36	33	
Alumni by North Carolina Region and County	38	34	
<b>II. Faculty and Staff</b>			
Employees by Employment Status, Job Class, Race and Sex	41	35	
Full-Time Instructional Faculty by Rank, Sex and Tenure Status	42	36	
Full-Time Instructional Faculty with Terminal Degrees by Rank and Department	43	37	
Full-Time Instructional Faculty Salaries by Rank	44	38	
<b>III. Fiscal Resources</b>			
Current Fund Revenues and Expenditures	46	39	
Operating Expenditures by Function	47	40	
Tuition and Fees Per Year	48	41	
Distance Education Tuition and Fees	48	42	
Tuition and Fees/Regular Full-Time Undergraduates (UNC Schools)	49	43	
External Grants and Contracts Funding Amounts by Fiscal Year	50	44	
Endowed Funds	51		4
Source of Outright Gift Income by Year	51	45	
Alumni Donations	52	46	
Outright Gift Income Summary	52	47	
Building Inventory	53	48	
Percentage of General Purpose Classrooms Utilized by Day and Time	54	49	
Classrooms and Labs by Building	55	50	
Residence Hall Capacity and Number of Students Housed	56	51	
Capital Improvements	57	52	
Ramsey Library Resources	58	53	
<b>IV. UNCA History, Governance, and Organization</b>			
History of UNC Asheville	60		
Chief Executive Officers	60		
UNC Asheville Mission Statement	61		
UNC Asheville Board of Trustees	62		
UNC Asheville Foundation Board	63		
UNC Asheville National Alumni Advisory Board	65		
UNC Asheville Organizational Chart	66		

## Students and Alumni

Table 1  
 Fall Applications, Acceptances, and Enrollments\*  
 New Degree-Seeking Students by Sex: Three-Year Trend

		2016			2017			2018		
		Female	Male	Total	Female	Male	Total	Female	Male	Total
First-Time Freshmen	Number of Applicants	2,147	1290	3,437	2,147	1211	3,358	2,002	1162	3,164
	Number Accepted	1753	924	2,677	1800	930	2,730	1906	1060	2,966
	Accept/Apply Ratio	81.6	71.6	77.9	84.0	76.9	81.3	95.2	91.2	93.7
	Number Enrolled	416	250	666	394	254	648	469	319	788
	Enroll/Accept Ratio	23.9	27.3	24.9	22.0	27.5	23.7	24.6	30.1	26.6
New Transfers	Number of Applicants	326	251	577	312	243	555	254	225	479
	Number Accepted	297	206	503	300	219	519	248	223	471
	Accept/Apply Ratio	91.1	82.1	87.2	96.2	90.1	93.5	97.6	99.1	98.3
	Number Enrolled	178	125	303	196	159	355	172	148	320
	Enroll/Accept Ratio	60.1	60.7	60.2	65.3	72.6	68.4	69.4	66.4	67.9
New Graduate Students	Number of Applicants	7	9	16	3	5	8	5	4	9
	Number Accepted	6	9	15	3	5	8	4	3	7
	Accept/Apply Ratio	85.7	100.0	93.8	100.0	100.0	100.0	80.0	75.0	77.8
	Number Enrolled	3	8	11	3	1	4	3	2	5
	Enroll/Accept Ratio	50.0	88.9	73.3	100.0	20.0	50.0	75.0	66.7	71.4

Note: Incomplete applications are not included.

\* Does not include extension students.

Table 2  
Out of State Freshman Applications, Acceptances and Enrollments by State\*

	2016			2017			2018		
	Applied	Accepted	Enrolled	Applied	Accepted	Enrolled	Applied	Accepted	Enrolled
Alaska	2	2	0						
Alabama	9	7	0				1	1	1
Arkansas	6	4	0	2	2	2			
Arizona	6	4	0						
California	33	16	2	2	2	2	2	2	1
Colorado	10	7	3				2	2	2
Connecticut	45	26	3	1	1	1	2	2	2
District of Columbia	35	19	0	1	1	1	2	2	2
Delaware	8	4	0	1	1	1	1	1	1
Florida	130	73	15	16	16	15	20	20	19
Georgia	129	87	9	8	8	8	10	10	10
Hawaii	1	0	0						
Iowa	1	1	1						
Illinois	54	31	3	4	4	4	5	5	5
Indiana	14	5	0						
Kansas	5	4	0						
Kentucky	19	14	3	1	1	1	1	1	1
Louisiana	11	7	0	1	1	1	1	1	1
Massachusetts	62	28	1	3	3	3	2	2	2
Maryland	103	64	7	2	2	2	10	10	9
Maine	7	3	0				2	2	2
Michigan	15	8	1				2	2	2
Minnesota	7	5	2	1	1	1			
Missouri	7	4	0				1	1	1
Mississippi	5	1	0						
Montana	3	1	0						
North Dakota							1	1	1
Nebraska	1	1	0				1	1	1
New Hampshire	8	4	1				1	1	1
New Jersey	60	34	5	3	3	3	4	4	3
New Mexico	1	1	0						
Nevada	1	1	0						
New York	94	50	4	1	1	0	3	3	3
Ohio	43	23	5	6	6	5	6	6	6
Oklahoma	5	3	0				1	1	1
Oregon	5	5	0	1	1	1			
Pennsylvania	47	31	3	3	3	2	5	5	4
Puerto Rico	2	2	0				2	2	2
Rhode Island	9	4	0						
South Carolina	75	47	7	3	3	3	8	8	8
Tennessee	69	44	4	5	5	5	4	4	3
Texas	38	25	2	1	1	1	4	4	4
Utah	4	0	0						
Virginia	104	62	13	11	11	10	13	13	13
Vermont	11	8	1				1	1	1
Washington	7	5	0				1	1	1
Wisconsin	5	3	1	3	3	3	2	2	2
West Virginia	4	2	0				1	1	1
Wyoming	1	1	0	1	1	1			

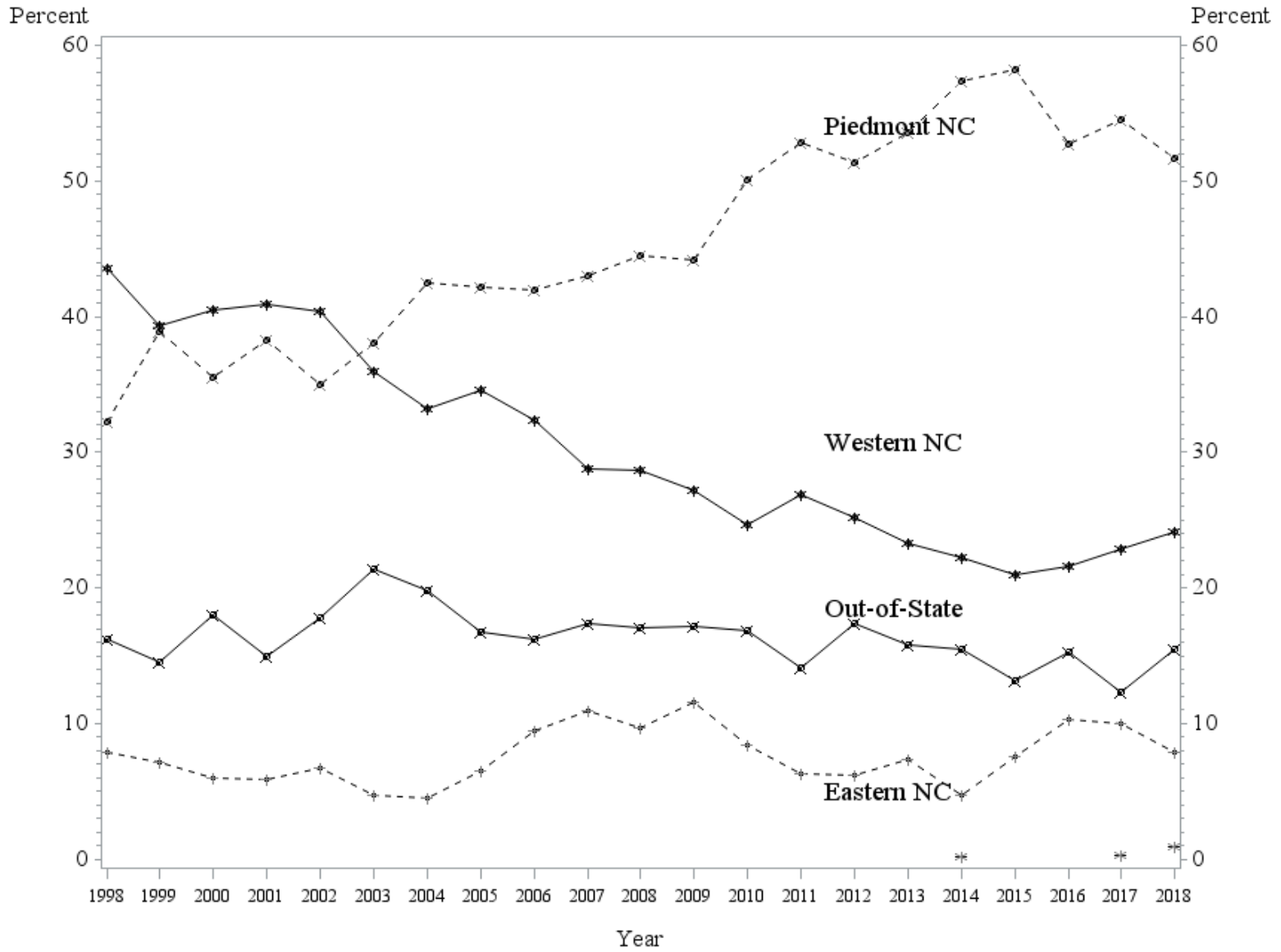
Table 2  
Out of State Freshman Applications, Acceptances and Enrollments by State\*

	2016			2017			2018		
	Applied	Accepted	Enrolled	Applied	Accepted	Enrolled	Applied	Accepted	Enrolled
U.S. Minor Outlying Island	5	2	0						
Unknown OutSt	23	7	0	3	3	3	4	4	2
International	113	35	6	3	3	3	7	7	6
Total	1,462	825	102	87	87	82	133	133	124

\* Does not include extension students.



Figure 1: Distribution of New Freshman Enrollments by Region\*  
Fall Semesters



\* Does not include extension students.

Table 3  
New Freshman Admission Scores\*  
by Residence Status

Fall Semester	N	Combined SAT			Top 20% H.S. Class	H.S. GPA		H.S. GPA Weighted		
		Mean	25th %tile	75th %tile	Percent	% Submit	Mean	% Submit	Mean	
2009	In-State	531	1,173	1,090	1,260	46.4	93.4	3.39	97.6	3.96
	Out-of-State	110	1,184	1,100	1,270	46.3	35.5	3.37	72.7	3.69
	Year Total	641	1,175	1,090	1,260	46.4	83.5	3.38	93.3	3.92
2010	In-State	495	1,170	1,080	1,260	44.5	90.7	3.38	94.3	3.96
	Out-of-State	100	1,162	1,090	1,240	32.0	41.0	3.48	70.0	3.70
	Year Total	595	1,168	1,080	1,260	43.1	82.4	3.39	90.3	3.92
2011	In-State	464	1,174	1,090	1,250	44.9	92.2	3.39	94.8	4.03
	Out-of-State	76	1,177	1,110	1,240	55.6	34.2	3.44	67.1	3.83
	Year Total	540	1,174	1,090	1,250	45.9	84.1	3.39	90.9	4.01
2012	In-State	457	1,183	1,100	1,250	50.0	93.4	3.45	97.4	4.08
	Out-of-State	96	1,191	1,080	1,260	49.0	46.9	3.54	71.9	4.02
	Year Total	553	1,184	1,100	1,250	49.9	85.4	3.46	93.0	4.07
2013	In-State	502	1,178	1,100	1,250	42.3	92.0	3.37	95.0	4.02
	Out-of-State	94	1,215	1,130	1,285	43.4	42.6	3.46	75.5	3.85
	Year Total	596	1,183	1,100	1,260	42.4	84.2	3.38	92.0	4.00
2014	In-State	534	1,180	1,110	1,250	44.0	91.6	3.41	94.8	4.08
	Out-of-State	99	1,189	1,100	1,270	51.2	46.5	3.53	75.8	3.88
	Year Total	633	1,182	1,110	1,250	44.6	84.5	3.42	91.8	4.06
2015	In-State	638	1,140	1,050	1,210	41.9	92.6	3.42	95.9	4.09
	Out-of-State	97	1,152	1,070	1,240	52.1	39.2	3.47	72.2	3.87
	Year Total	735	1,141	1,050	1,220	42.8	85.6	3.42	92.8	4.07
2016	In-State	564	1,149	1,050	1,220	44.9	92.9	3.48	96.6	4.14
	Out-of-State	102	1,141	1,040	1,210	42.9	43.1	3.47	72.6	3.75
	Year Total	666	1,147	1,050	1,220	44.7	85.3	3.48	92.9	4.10
2017	In-State	566	1,173	1,090	1,280	38.0	94.5	3.40	97.9	4.09
	Out-of-State	82	1,148	1,070	1,220	30.2	43.9	3.36	79.3	3.79
	Year Total	648	1,170	1,090	1,270	37.3	88.1	3.40	95.5	4.06
2018	In-State	664	1,149	1,060	1,250	31.7	92.0	3.33	97.6	3.98
	Out-of-State	124	1,144	1,060	1,235	43.9	45.2	3.34	78.2	3.77
	Year Total	788	1,148	1,060	1,240	32.9	84.6	3.33	94.5	3.95

Notes:

- (1) Weighted HS GPA includes advanced courses that carry more than four quality points per credit hour.
- (2) In 2012, UNC-GA policy was changed to allow the reporting of the score used in the admissions decision for students with both SAT and ACT scores. Prior to 2012, all test scores were reported.

\* Does not include extension students.

Figure 2: Fall 2017 Freshman SAT Scores and H.S. Rank Distributions

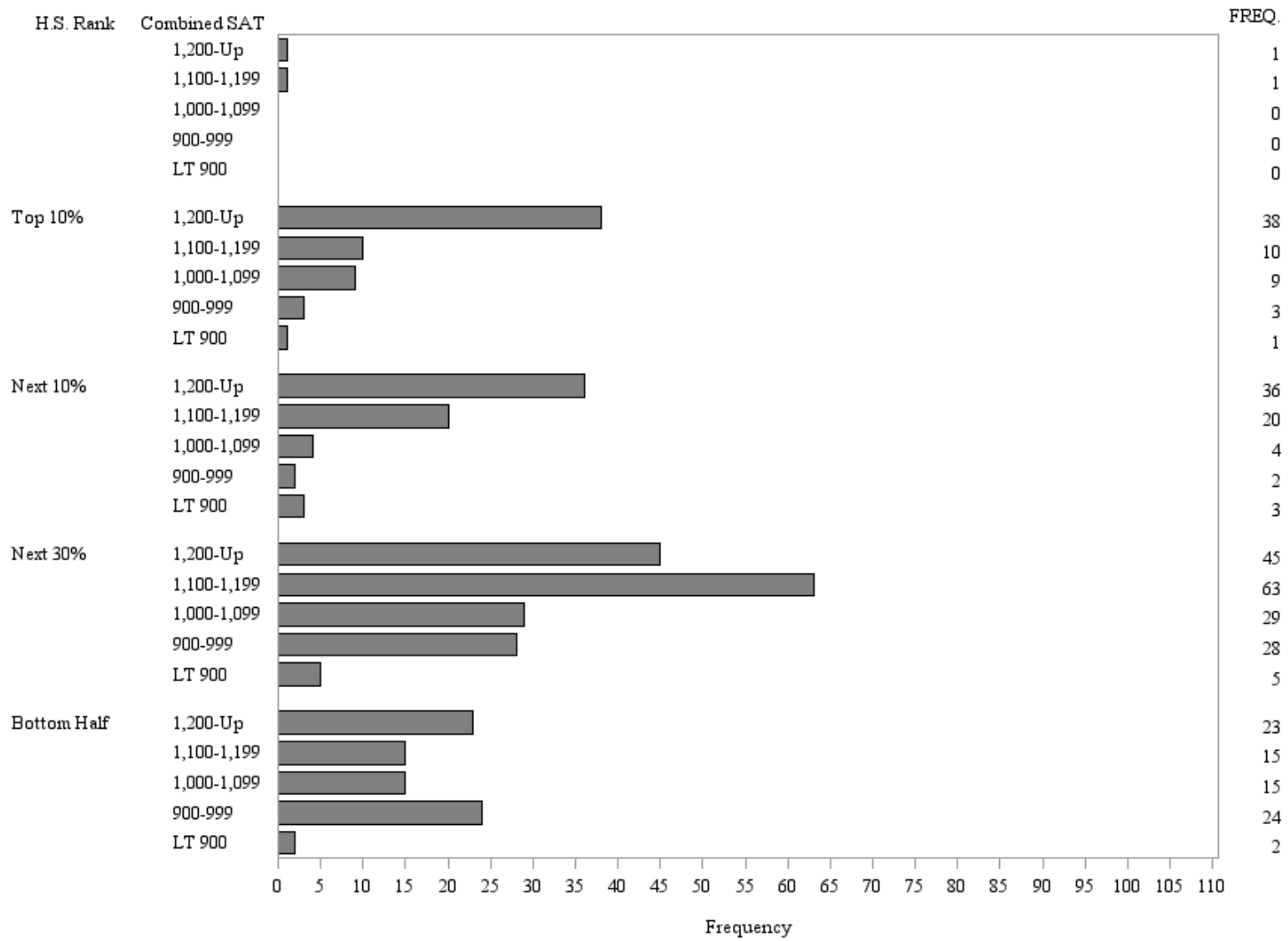


Table 4  
 Student Enrollment Demographic Profile  
 (Resident Credit + Extension Credit Students)  
 Fall 2018

	Undergraduate						Graduate		Grand Total
	Freshmen	Sophomores	Juniors	Seniors	Non-Degree	All	Masters Candidate	All	
Full-Time	894	667	769	840	63	3,233	1	1	3,234
Part-Time	19	43	63	186	202	513	18	18	531
In State	765	616	751	923	234	3,289	17	17	3,306
Out of State	148	94	81	103	31	457	2	2	459
Male	394	281	337	483	107	1,602	9	9	1,611
Female	519	429	495	543	158	2,144	10	10	2,154
White	670	535	635	809	195	2,844	16	16	2,860
Black	64	34	40	43	13	194			194
Hispanic	90	54	68	62	8	282			282
Asian	13	17	15	23	6	74			74
Pacific Islander		3				3			3
Amer Indian	11	2	3	9	6	31			31
Multi Racial	36	39	34	41	5	155	1	1	156
Race Unknown	18	20	32	31	17	118	1	1	119
International	11	6	5	8	15	45	1	1	46
Res Hall	699	277	189	120	11	1,296			1,296
Headcount	913	710	832	1,026	265	3,746	19	19	3,765

Table 5  
 Student Enrollment Demographic Profile  
 (Resident Credit Students Only)  
 Fall 2018

	Undergraduate						Graduate		Grand Total
	Freshmen	Sophomores	Juniors	Seniors	Non-Degree	All	Masters Candidate	All	
Full-Time	894	667	769	840	63	3,233	1	1	3,234
Part-Time	19	43	63	186	104	415	18	18	433
In State	765	616	751	923	137	3,192	17	17	3,209
Out of State	148	94	81	103	30	456	2	2	458
Male	394	281	337	483	80	1,575	9	9	1,584
Female	519	429	495	543	87	2,073	10	10	2,083
White	670	535	635	809	124	2,773	16	16	2,789
Black	64	34	40	43	2	183			183
Hispanic	90	54	68	62	8	282			282
Asian	13	17	15	23	4	72			72
Pacific Islander		3				3			3
Amer Indian	11	2	3	9		25			25
Multi Racial	36	39	34	41	3	153	1	1	154
Race Unknown	18	20	32	31	12	113	1	1	114
International	11	6	5	8	14	44	1	1	45
Res Hall	699	277	189	120	11	1,296			1,296
Headcount	913	710	832	1,026	167	3,648	19	19	3,667

Table 6  
 Student Enrollment Demographic Profile  
 (Extension Credit Students Only)  
 Fall 2018

	Undergraduate	
	Non-Degree	Grand Total
Part-Time	98	98
In State	97	97
Out of State	1	1
Male	27	27
Female	71	71
White	71	71
Black	11	11
Hispanic	0	0
Asian	2	2
Amer Indian	6	6
Multi Racial	2	2
Race Unknown	5	5
International	1	1
Headcount	98	98

Table 7  
Fall Enrolled Students by U.S.Region and State\*  
(International Students by Country)

		2016		2017		2018	
		Enrolled	%	Enrolled	%	Enrolled	%
The South	Alabama	2	0.1	3	0.1	4	0.1
	Arkansas	0	0.0	2	0.1	2	0.1
	Florida	48	1.3	48	1.3	55	1.5
	Georgia	50	1.3	45	1.2	45	1.2
	Kentucky	10	0.3	9	0.2	9	0.2
	Louisiana	1	0.0	1	0.0	1	0.0
	Mississippi	1	0.0	1	0.0	0	0.0
	North Carolina	3,284	88.4	3,267	87.8	3,198	87.2
	South Carolina	28	0.8	26	0.7	28	0.8
	Tennessee	15	0.4	21	0.6	20	0.5
	Virginia	34	0.9	34	0.9	38	1.0
	West Virginia	1	0.0	2	0.1	3	0.1
	Region Total	3,474	93.5	3,459	93.0	3,403	92.8
Mid-Atlantic	Delaware	0	0.0	1	0.0	2	0.1
	District of Columbia	5	0.1	4	0.1	4	0.1
	Maryland	30	0.8	27	0.7	27	0.7
	New Jersey	20	0.5	17	0.5	14	0.4
	New York	19	0.5	14	0.4	16	0.4
	Pennsylvania	10	0.3	15	0.4	15	0.4
		Region Total	84	2.3	78	2.1	78
New England	Connecticut	6	0.2	8	0.2	11	0.3
	Maine	4	0.1	4	0.1	3	0.1
	Massachusetts	3	0.1	7	0.2	7	0.2
	New Hampshire	5	0.1	2	0.1	3	0.1
	Rhode Island	1	0.0	1	0.0	1	0.0
	Vermont	7	0.2	6	0.2	8	0.2
		Region Total	26	0.7	28	0.8	33
Midwest	Illinois	17	0.5	17	0.5	15	0.4
	Indiana	2	0.1	2	0.1	1	0.0
	Iowa	2	0.1	3	0.1	2	0.1
	Michigan	3	0.1	3	0.1	3	0.1
	Minnesota	4	0.1	7	0.2	3	0.1
	Missouri	1	0.0	1	0.0	2	0.1
	Nebraska	1	0.0	2	0.1	3	0.1
	North Dakota	0	0.0	0	0.0	1	0.0
	Ohio	16	0.4	18	0.5	21	0.6
	Wisconsin	5	0.1	9	0.2	9	0.2
	Region Total	51	1.4	62	1.7	60	1.6
The Southwest	New Mexico	1	0.0	0	0.0	0	0.0
	Oklahoma	0	0.0	0	0.0	1	0.0
	Texas	5	0.1	7	0.2	12	0.3
		Region Total	6	0.2	7	0.2	13
The West	Alaska	0	0.0	1	0.0	1	0.0
	California	8	0.2	12	0.3	13	0.4
	Colorado	6	0.2	6	0.2	7	0.2
	Hawaii	1	0.0	1	0.0	1	0.0
	Idaho	0	0.0	1	0.0	1	0.0
	Montana	0	0.0	1	0.0	1	0.0
	Oregon	3	0.1	4	0.1	3	0.1
	Utah	0	0.0	0	0.0	1	0.0

Table 7  
Fall Enrolled Students by U.S.Region and State\*  
(International Students by Country)

		2016		2017		2018		
		Enrolled	%	Enrolled	%	Enrolled	%	
Territories	Washington	0	0.0	0	0.0	2	0.1	
	Wyoming	1	0.0	2	0.1	1	0.0	
	Region Total	19	0.5	28	0.8	31	0.8	
	Puerto Rico	0	0.0	0	0.0	2	0.1	
	Virgin Islands	1	0.0	0	0.0	0	0.0	
	Region Total	1	0.0	0	0.0	2	0.1	
International	Australia	2	0.1	1	0.0	1	0.0	
	Austria	1	0.0	0	0.0	2	0.1	
	Bhutan	0	0.0	1	0.0	0	0.0	
	Bolivia	1	0.0	0	0.0	0	0.0	
	Brazil	1	0.0	1	0.0	2	0.1	
	Canada	0	0.0	1	0.0	1	0.0	
	Cayman Islands	1	0.0	1	0.0	0	0.0	
	China	3	0.1	0	0.0	0	0.0	
	Colombia	0	0.0	0	0.0	1	0.0	
	Denmark	1	0.0	1	0.0	0	0.0	
	Ecuador	1	0.0	2	0.1	2	0.1	
	Finland	0	0.0	1	0.0	0	0.0	
	France	2	0.1	3	0.1	1	0.0	
	Germany	0	0.0	1	0.0	2	0.1	
	Hong Kong (migration)	0	0.0	1	0.0	0	0.0	
	India	0	0.0	1	0.0	1	0.0	
	Indonesia	1	0.0	1	0.0	0	0.0	
	Ireland	0	0.0	1	0.0	1	0.0	
	Italy	1	0.0	0	0.0	0	0.0	
	Japan	1	0.0	1	0.0	1	0.0	
	Lithuania	0	0.0	1	0.0	0	0.0	
	Mexico	4	0.1	4	0.1	4	0.1	
	Netherlands	1	0.0	1	0.0	0	0.0	
	New Zealand	1	0.0	0	0.0	0	0.0	
	Nigeria	0	0.0	1	0.0	2	0.1	
	Norway	2	0.1	0	0.0	0	0.0	
	South Africa	1	0.0	1	0.0	4	0.1	
	South Korea	8	0.2	1	0.0	5	0.1	
	Spain	1	0.0	0	0.0	1	0.0	
	Sweden	0	0.0	1	0.0	0	0.0	
	Switzerland	0	0.0	1	0.0	0	0.0	
	Thailand	0	0.0	0	0.0	1	0.0	
	United Kingdom	9	0.2	13	0.3	9	0.2	
	United States of America	5	0.1	9	0.2	3	0.1	
	Zimbabwe	0	0.0	0	0.0	1	0.0	
		Region Total	48	1.3	51	1.4	45	1.2
	Unknown	Unknown	6	0.2	6	0.2	2	0.1
		Region Total	6	0.2	6	0.2	2	0.1
	Total		3,715	100.0	3,719	100.0	3,667	100.0

\* Does not include extension students.

Table 8  
Fall Enrolled Students by North Carolina Region and County\*

		2016		2017		2018	
		Enrolled	%	Enrolled	%	Enrolled	%
Western NC	Alleghany			1	0.0	1	0.0
	Ashe	5	0.2	4	0.1	5	0.2
	Avery	2	0.1				
	Buncombe	926	28.2	865	26.7	774	24.5
	Burke	31	0.9	27	0.8	31	1.0
	Caldwell	20	0.6	15	0.5	11	0.3
	Cherokee	10	0.3	12	0.4	11	0.3
	Clay	7	0.2	5	0.2	5	0.2
	Graham	1	0.0	4	0.1	7	0.2
	Haywood	61	1.9	53	1.6	60	1.9
	Henderson	182	5.5	169	5.2	169	5.3
	Jackson	7	0.2	7	0.2	11	0.3
	Macon	9	0.3	10	0.3	8	0.3
	Madison	34	1.0	30	0.9	31	1.0
	McDowell	55	1.7	46	1.4	53	1.7
	Mitchell	5	0.2	3	0.1	7	0.2
	Polk	23	0.7	30	0.9	30	0.9
	Rutherford	22	0.7	21	0.6	23	0.7
	Surry	17	0.5	22	0.7	20	0.6
	Swain	15	0.5	15	0.5	20	0.6
	Transylvania	33	1.0	24	0.7	25	0.8
	Watauga	18	0.5	18	0.6	20	0.6
Wilkes	3	0.1	3	0.1	8	0.3	
Yancey	22	0.7	16	0.5	18	0.6	
Region Total		1,508	46.0	1,400	43.2	1,348	42.7
Piedmont NC	Alamance	23	0.7	27	0.8	31	1.0
	Alexander	4	0.1	7	0.2	8	0.3
	Anson	1	0.0				
	Cabarrus	37	1.1	47	1.5	46	1.5
	Caswell					1	0.0
	Catawba	55	1.7	54	1.7	61	1.9
	Chatham	36	1.1	36	1.1	34	1.1
	Cleveland	18	0.5	17	0.5	16	0.5
	Davidson	10	0.3	11	0.3	11	0.3
	Davie	20	0.6	15	0.5	18	0.6
	Durham	84	2.6	84	2.6	73	2.3
	Forsyth	121	3.7	120	3.7	106	3.4
	Franklin	9	0.3	7	0.2	11	0.3
	Gaston	58	1.8	57	1.8	55	1.7
	Granville	4	0.1	5	0.2	7	0.2
	Guilford	121	3.7	121	3.7	111	3.5
	Iredell	47	1.4	51	1.6	55	1.7
	Lee	5	0.2	6	0.2	5	0.2
	Lincoln	26	0.8	25	0.8	26	0.8
	Mecklenburg	245	7.5	250	7.7	231	7.3
	Montgomery			1	0.0	2	0.1
	Moore	16	0.5	23	0.7	15	0.5
	Orange	128	3.9	113	3.5	108	3.4
Person	2	0.1	5	0.2	6	0.2	
Randolph	9	0.3	17	0.5	13	0.4	
Richmond	2	0.1	3	0.1	5	0.2	



Table 8  
Fall Enrolled Students by North Carolina Region and County\*

		2016		2017		2018	
		Enrolled	%	Enrolled	%	Enrolled	%
	Rockingham	11	0.3	10	0.3	14	0.4
	Rowan	27	0.8	32	1.0	33	1.0
	Stanly	7	0.2	9	0.3	6	0.2
	Stokes	10	0.3	12	0.4	10	0.3
	Union	85	2.6	89	2.7	91	2.9
	Vance	1	0.0	2	0.1	2	0.1
	Wake	311	9.5	320	9.9	330	10.4
	Yadkin	8	0.2	9	0.3	7	0.2
	Region Total	1,541	47.0	1,585	48.9	1,548	49.0
Eastern NC	Beaufort	2	0.1	4	0.1	7	0.2
	Bertie	2	0.1	2	0.1	1	0.0
	Bladen	1	0.0	2	0.1	2	0.1
	Brunswick	8	0.2	6	0.2	8	0.3
	Camden	2	0.1	4	0.1	2	0.1
	Carteret	11	0.3	11	0.3	8	0.3
	Chowan	3	0.1	2	0.1		
	Columbus	2	0.1				
	Craven	19	0.6	19	0.6	17	0.5
	Cumberland	14	0.4	19	0.6	19	0.6
	Currituck	5	0.2	5	0.2	5	0.2
	Dare	17	0.5	17	0.5	10	0.3
	Duplin	1	0.0	1	0.0	4	0.1
	Edgecombe	2	0.1	1	0.0	1	0.0
	Gates	1	0.0	1	0.0	1	0.0
	Halifax	1	0.0	5	0.2	5	0.2
	Harnett	6	0.2	8	0.2	8	0.3
	Hertford					2	0.1
	Hoke			2	0.1	2	0.1
	Johnston	15	0.5	14	0.4	18	0.6
	Lenoir	1	0.0	1	0.0	1	0.0
	Martin	3	0.1	2	0.1	2	0.1
	Nash	1	0.0	4	0.1	3	0.1
	New Hanover	52	1.6	56	1.7	60	1.9
	Northampton			3	0.1	2	0.1
	Onslow	17	0.5	24	0.7	26	0.8
	Pasquotank	1	0.0	2	0.1	1	0.0
	Pender	9	0.3	6	0.2	7	0.2
	Perquimans	1	0.0	1	0.0	1	0.0
	Pitt	15	0.5	13	0.4	12	0.4
	Robeson	2	0.1	4	0.1	4	0.1
	Sampson	5	0.2	3	0.1	2	0.1
	Scotland	1	0.0				
	Wayne	3	0.1	4	0.1	5	0.2
	Wilson	9	0.3	9	0.3	13	0.4
	Region Total	232	7.1	255	7.9	259	8.2
Unknown				1	0.0	4	0.1
	Region Total			1	0.0	4	0.1
Total		3,281	100.0	3,241	100.0	3,159	100.0

\* Does not include extension students.

Table 9  
 Minority Presence: Fall Semesters\*

Fall Semester	Total Headcount	International Students	Percent	
			Minority Total	Minority
1990	3,310	23	190	5.7
1991	3,261	23	163	5.0
1992	3,277	20	191	5.8
1993	3,165	30	201	6.4
1994	3,195	38	205	6.4
1995	3,222	38	229	7.1
1996	3,092	41	218	7.1
1997	3,179	42	210	6.6
1998	3,175	43	214	6.7
1999	3,164	38	207	6.5
2000	3,234	44	216	6.7
2001	3,247	41	229	7.1
2002	3,294	31	221	6.7
2003	3,348	42	241	7.2
2004	3,488	47	262	7.5
2005	3,398	41	247	7.3
2006	3,497	39	248	7.1
2007	3,527	45	284	8.1
2008	3,460	44	296	8.6
2009	3,695	42	319	8.6
2010	3,765	42	345	9.2
2011	3,665	51	356	9.7
2012	3,587	41	379	10.6
2013	3,628	32	427	11.8
2014	3,704	41	482	13.0
2015	3,782	60	553	14.6
2016	3,715	48	623	16.8
2017	3,719	51	658	17.7
2018	3,667	45	719	19.6

Note: International students are not included in the calculation of the minority total nor the percent.

Table 10  
 Headcount by Race/Ethnicity: Fall 2018\*

Unduplicated Race/Ethnicity Category	Total N	Race Categories (students can check more than one)					
		American Indian	Asian	Black	Pacific Islander	White	Unreported
American Indian	25	25	0	0	0	0	0
Asian	72	0	72	0	0	0	0
Black	183	0	0	183	0	0	0
Hispanic	282	14	8	16	2	172	93
Pacific Islander	3	0	0	0	3	0	0
White	2,789	0	0	0	0	2,789	0
Multiracial	154	65	54	64	11	138	0
Nonresident Alien	45	0	7	5	0	22	11
Unreported	114	0	0	0	0	0	114
Total	3,667	104	141	268	16	3,121	218

\* Does not include extension students.

Table 11  
Distribution of Student Age by Class\*  
Fall 2018

	N	Age Group Percent				Age			
		LT 25	25-29	30-39	40-Up	Median	Mean	Min	Max
New Freshmen	788	99.9	0.1	0.0	0.0	18.0	18.0	16	28
Other Freshmen	203	94.6	2.5	2.0	1.0	19.0	20.1	17	53
Sophomores	669	91.0	5.5	2.4	1.0	19.0	20.7	17	54
Juniors	796	87.1	7.0	4.4	1.5	21.0	22.0	17	56
Seniors	1,025	75.7	13.5	8.2	2.6	22.0	23.9	18	66
Non-Degree	167	30.5	26.3	23.4	19.8	28.0	31.1	16	76
Masters Candidates	19	15.8	26.3	15.8	42.1	34.0	38.7	22	70
Total	3,667	84.8	7.8	4.9	2.4	20.0	21.8	16	76

\* Does not include extension students.

Table 12  
Undergraduate Degree-Seeking Students  
With at Least One Parent Having 4-Yr. College Degree\*  
Fall 2018

Class	N	Parent Education Data Reported		Mother	Father	Both	Either
		N	Percent	4-Yr Deg Percent	4-Yr Deg Percent	4-Yr Deg Percent	4-Yr Deg Percent
Freshmen	913	878	96.2	56.3	51.3	37.6	69.9
Sophomore	710	683	96.2	56.7	52.7	40.6	68.8
Junior	832	791	95.1	54.0	46.4	35.5	64.9
Senior	1,026	960	93.6	52.9	51.5	38.1	66.3
Total	3,481	3,312	95.1	54.8	50.5	37.9	67.4

\* Does not include extension students

Table 13  
UNC System Undergraduate Bachelor's Degree-Seeking Demographic Comparisons  
Fall 2018

Institution	Total Heads	Percent Full-Time	Percent Out-of-State	Percent Under 25	Percent Female	Percent Minority	Percent STEM
Appalachian State	17,264	94.7	8.2	93.4	56.2	15.5	17.2
East Carolina	22,330	87.4	10.1	87.0	56.5	30.2	17.4
Elizabeth City State	1,553	91.4	17.5	81.2	57.8	80.5	26.7
Fayetteville State	4,915	78.2	4.8	55.2	68.6	76.8	9.3
NC A & T	10,298	92.4	25.3	88.5	57.0	91.5	33.1
NC Central	5,913	88.6	15.0	81.9	68.1	92.5	13.9
NC State	23,326	93.5	12.7	94.9	47.0	23.1	56.2
UNC Asheville	3,478	91.1	12.3	87.8	57.1	20.1	18.1
UNC Chapel Hill	18,946	97.7	17.7	97.3	59.5	32.3	19.1
UNC Charlotte	23,939	87.4	7.5	86.2	46.8	38.6	29.4
UNC Greensboro	16,238	87.0	4.9	82.0	66.6	51.3	20.4
UNC Pembroke	5,960	82.7	4.7	77.0	60.8	61.5	20.1
UNC Wilmington	14,076	85.2	11.7	81.3	62.2	17.6	12.4
UNC School of the Arts	890	99.3	47.6	96.5	53.4	24.8	0.0
Western Carolina	9,835	87.0	9.5	83.5	54.3	18.6	17.6
Winston-Salem	4,608	89.2	8.3	82.7	72.4	86.2	7.9
UNC Total	183,569	89.8	11.3	87.1	56.8	38.8	24.3

Source: UNC InfoCenter

Table 14  
Residence Halls and Number of Students Housed: Fall 2018\*

Residence Hall	Men	Women	Total
Ashe Hall	8	12	20
Founders Hall	101	175	276
Gardner Hall	12	8	20
Governors Hall	56	104	160
Hoey Hall	16	4	20
Mills Hall	123	152	275
Moore Hall	4	16	20
Scott Hall	12	8	20
South Ridge Hall	37	62	99
West Ridge Hall	47	78	125
Woods Hall	106	155	261
Total On Campus	522	774	1,296

\* Does not include extension students.

Table 15  
Commuter vs Residence Hall Students\*  
(Undergraduate Degree-Seeking Students)

Fall Semester	Total Enrollment	Commuter	Res Hall	Percent Res Hall
2002	2,974	1,991	983	33.1
2003	3,093	1,957	1136	36.7
2004	3,246	1,969	1277	39.3
2005	3,141	2,079	1062	33.8
2006	3,239	2,180	1059	32.7
2007	3,278	2,165	1113	34.0
2008	3,173	2,047	1126	35.5
2009	3,344	2,175	1169	35.0
2010	3,438	2,299	1139	33.1
2011	3,356	2,247	1109	33.0
2012	3,288	2,025	1263	38.4
2013	3,347	1,996	1351	40.4
2014	3,446	2,022	1424	41.3
2015	3,545	2,120	1425	40.2
2016	3,494	2,134	1360	38.9
2017	3,521	2,171	1350	38.3
2018	3,492	2,196	1296	37.1

\* Does not include extension students.

Table 16  
Summer School Headcount Enrollment by Class: 10-Year Trend\*

	2009	2010	2011	2012	2013	2014	2015	2016	2017	2018
Freshman	31	49	28	30	43	38	11	20	17	26
Sophomore	89	86	96	89	67	104	80	116	76	88
Junior	162	242	224	201	171	173	184	210	183	197
Senior	359	370	437	391	372	345	371	309	338	457
Non-degree	40	16	31	30	27	38	23	18	28	38
Post-Bacc Certif	8	3	3	6	2	6	2	2	0	0
Post-Bacc Non-degree	11	14	15	19	17	14	23	12	10	16
Masters Candidate	6	3	5	1	1	2	1	3	3	1
Special Graduate	5	0	0	0	0	1	0	1	1	0
Teacher Certificate	23	25	20	3	8	6	5	2	5	0
Distance Learning	1	0	0	0	0	1	1	0	1	1
Visitor	88	63	83	68	68	75	76	58	61	77
Total	823	871	942	838	776	803	777	751	723	901

\* Does not include extension students.

Table 17  
Summer School Headcount, FTE, and SCH Enrollment: 10-Year Trend\*

Year	Head- count	FTE	SCH
2009	823	265	4,256
2010	871	306	4,545
2011	942	330	4,868
2012	838	309	4,403
2013	776	309	4,322
2014	803	299	4,225
2015	777	300	4,381
2016	751	282	4,112
2017	723	269	3,861
2018	901	257	3,774

\* Does not include extension students.

Table 18  
Distance Education Headcount by Gender, Race, Class, and Age Group: Fall 2018

	Headcount
Female	71
Male	27
Asian	2
Black	11
American Indian	6
Multi-racial	2
Non-Resident Alien	1
Hispanic	0
Not Reported	5
White	71
Distance Learning	98
World Lang Consortium	0
Age LT 25	14
Age 25-29	8
Age 30-39	24
Age 40-Up	52
Total	98

Table 19: Distance Education SCH by Funding Category

		2016-17	2017-18	2018-19
Category 1	Actual	611	473	475
	Fundable	611	473	475
Category 2	Actual	989	1,023	750
	Fundable	989	1,023	750
Category 3	Actual	160	209	172
	Fundable	160	209	172
Total	Actual	1,760	1,705	1,397
	Fundable	1,760	1,705	1,397

Notes: Fundable SCH does not include SCH generated through contractual relationships with other institutions. (e.g. Morganton Correctional Center). Data are as of End of Term.

Table 20  
New Fall Transfer Enrollments by Institution Type\*

			2014		2015		2016		2017		2018	
			N	%	N	%	N	%	N	%	N	%
North Carolina	Public	Senior Institutions	43	11.7	33	10.4	38	12.5	34	9.6	44	13.8
		Community Colleges	218	59.4	189	59.4	183	60.4	220	62.0	179	55.9
	Private	Senior Institutions	23	6.3	17	5.3	25	8.3	21	5.9	10	3.1
		Junior Institutions	1	0.3	-	-	1	0.3	-	-	-	-
		Other	1	0.3	1	0.3	3	1.0	2	0.6	2	0.6
	Total		286	77.9	240	75.5	250	82.5	277	78.0	235	73.4
Out-of-State	Public	Senior Institutions	35	9.5	23	7.2	16	5.3	13	3.7	31	9.7
		Junior Institutions	19	5.2	32	10.1	15	5.0	36	10.1	26	8.1
		Other	3	0.8	1	0.3	-	-	-	-	1	0.3
	Private	Senior Institutions	21	5.7	15	4.7	17	5.6	20	5.6	15	4.7
		Junior Institutions	-	-	-	-	-	-	1	0.3	-	-
		Other	1	0.3	1	0.3	-	-	-	-	4	1.3
	Other	Foreign Institutions	-	-	1	0.3	1	0.3	3	0.8	2	0.6
		Unclassified	2	0.5	5	1.6	4	1.3	5	1.4	6	1.9
	Total		81	22.1	78	24.5	53	17.5	78	22.0	85	26.6
Grand Total All Institutions			367	100.0	318	100.0	303	100.0	355	100.0	320	100.0

\* Does not include extension students.

Table 21  
Source of New Undergraduate Transfer Students\*  
Fall 2018

Institution	Apply	Accept	Enroll
Asheville - Buncombe Technical Community College	114	97	77
Wake Technical Community College	50	32	16
Blue Ridge Community College	21	17	12
Central Piedmont Community College	25	17	11
Appalachian State University	13	11	10
University of North Carolina at Charlotte	10	9	8
Western Piedmont Community College	11	11	8
University of North Carolina at Chapel Hill	9	8	7
Haywood Community College	7	6	6
North Carolina State University	8	5	5
Alamance Community College	7	5	4
Cape Fear Community College	8	4	4
Johnston Community College	5	5	4
Tri-County Community College	9	5	4
University of North Carolina at Greensboro	8	4	4
Western Carolina University	7	4	4
Caldwell Community College and Technical Institute	5	3	3
Catawba Valley Community College	10	5	3
Durham Technical Community College	9	6	3
East Carolina University	4	4	3
Forsyth Technical Community College	6	5	3
McDowell Technical Community College	4	4	3
Warren Wilson College	4	3	3
Other	183	140	115
			320

\* Does not include extension students.



Table 22  
Retention & Graduation Rates  
of New Fall Entering *Full-time* Freshmen\*  
2008 - 2017 Cohorts

	Cohort		Years After Entry					
	Year	N	1	2	3	4	5	6
Retention Rate	2008	586	81.9	72.9	67.4	28.2	4.3	1.9
	2009	639	81.5	68.9	63.4	26.4	5.0	1.6
	2010	592	80.7	68.4	64.0	24.7	4.2	1.4
	2011	538	78.4	69.3	63.6	21.0	3.3	1.3
	2012	549	80.7	69.8	64.7	18.9	3.8	1.1
	2013	593	77.2	65.9	60.2	22.3	5.4	
	2014	625	78.9	69.9	63.8	17.2		
	2015	734	78.2	68.8	62.0			
	2016	663	74.7	63.3				
	2017	647	73.0					
Graduation Rate	2008	586	0.0	0.0	0.7	38.4	60.8	64.2
	2009	639	0.0	0.2	0.8	36.0	56.0	59.9
	2010	592	0.0	0.5	1.4	39.0	59.3	61.8
	2011	538	0.0	0.0	2.0	42.2	59.5	61.5
	2012	549	0.0	0.4	1.8	45.9	61.4	63.8
	2013	593	0.0	0.3	2.2	38.6	55.1	
	2014	627	0.0	0.8	2.4	47.4		
	2015	734	0.0	0.7	4.5			
	2016	663	0.0	0.9				
	2017	647	0.0					
Persistence Rate**	2008	586	81.9	72.9	68.1	66.6	65.0	66.0
	2009	639	81.5	69.0	64.2	62.4	61.0	61.5
	2010	592	80.7	68.9	65.4	63.7	63.5	63.2
	2011	538	78.4	69.3	65.6	63.2	62.8	62.8
	2012	549	80.7	70.1	66.5	64.8	65.2	64.8
	2013	593	77.2	66.3	62.4	60.9	60.5	
	2014	627	78.9	70.8	66.2	64.6		
	2015	734	78.2	69.5	66.5			
	2016	663	74.7	64.3				
	2017	647	73.0					

\* Does not include extension students.

\*\* Persistence rate is the percentage of students that are enrolled or graduated.

Table 23  
Retention & Graduation Rates  
of New Fall Entering Transfers\*  
2008 - 2017

	Cohort		Years After Entry					
	Year	N	1	2	3	4	5	6
Retention Rate	2008	296	76.4	54.7	23.0	5.4	2.4	0.7
	2009	318	78.9	55.7	20.4	4.1	0.6	0.3
	2010	359	82.2	61.3	25.9	10.0	3.6	1.4
	2011	330	74.8	56.4	20.9	7.3	2.4	0.9
	2012	321	76.9	56.1	21.8	5.6	2.5	1.6
	2013	378	78.3	57.7	20.6	3.7	1.1	
	2014	366	75.7	52.5	21.0	3.3		
	2015	318	77.4	55.0	21.1			
	2016	300	75.7	52.7				
	2017	355	72.4					
Graduation Rate	2008	296	0.0	12.5	43.6	59.8	62.5	64.2
	2009	318	0.0	11.9	44.0	59.4	61.9	62.6
	2010	359	0.0	8.4	42.9	58.8	65.2	66.9
	2011	330	0.0	8.8	43.3	55.5	60.3	62.4
	2012	321	0.0	11.2	43.6	58.9	61.7	62.6
	2013	378	0.5	14.0	46.8	65.6	68.3	
	2014	366	0.0	16.4	47.5	63.4		
	2015	318	0.0	16.4	46.9			
	2016	300	0.0	14.0				
	2017	355	0.3					
Persistence Rate*	2008	296	76.4	67.2	66.6	65.2	64.9	64.9
	2009	318	78.9	67.6	64.5	63.5	62.6	62.9
	2010	359	82.2	69.6	68.8	68.8	68.8	68.2
	2011	330	74.8	65.2	64.2	62.7	62.7	63.3
	2012	321	76.9	67.3	65.4	64.5	64.2	64.2
	2013	378	78.8	71.7	67.5	69.3	69.3	
	2014	366	75.7	68.9	68.6	66.7		
	2015	318	77.4	71.4	67.9			
	2016	300	75.7	66.7				
	2017	355	72.7					

\* Does not include extension students.

\*Persistence rate is the percentage of students that are enrolled or graduated.

# Table 24

## Academic Program Inventory: Fall 2018

Discipline Division, CIP Code, Discipline Specialty, Degree Abbreviation, and Degree Program Title

### **Natural Resources and Conservation**

#### *3.0103 Environmental Studies*

BS Environmental Science/Studies

#### *3.0103 Climate Change and Society Certificate Program*

PB Climate Change and Society

PB Environmental and Cultural Sustainability

### **Women's Studies**

#### *5.0207 Women's Studies*

BA Women, Gender and Sexuality Studies

### **Communication, Journalism, and Related Programs**

#### *9.0102 Mass Communication/Media Studies*

BA Journalism and Mass Communication

### **Computer & Information Sciences & Support Services**

#### *11.0701 Computer Science*

BS Computer Science

### **Engineering**

#### *14.0101 Engineering, General*

BS Engineering (Joint w/UNCA & NCSU)

### **Foreign Languages, Literatures and Linguistics**

#### *16.0101 Languages and Literatures*

BA Language and Literatures

BA Language and Literatures with Teacher Licensure

#### *16.12 Classics & Classical Languages, Literatures & Linguistics, Gen*

BA Classics

BA Classics with Teacher Licensure in Latin

### **English Language and Literatures/Letters**

#### *23.0101 English Language and Literature, General*

BA English

BA English with Teacher Licensure

### **Liberal Arts & Sciences, General Studies & Humanities**

#### *24.0101 Liberal Arts and Sciences/Liberal Studies*

BA Interdisciplinary Studies

MLAS Liberal Arts

### **Biological and Biomedical Sciences**

#### *26.0101 Biology/Biological Sciences, General*

BS Biology

BS Biology with Teacher Licensure

### **Mathematics and Statistics**

#### *27.0101 Mathematics, General*

BA Mathematics

BA Mathematics with Teacher Licensure

### **Philosophy and Religious Studies**

#### *38.0101 Philosophy*

BA Philosophy

#### *38.0201 Religious Studies*

BA Religious Studies

### **Physical Sciences**

#### *40.0401 Atmospheric Sciences and Meteorology, General*

BS Atmospheric Science

### *40.0501 Chemistry, General*

BA Chemistry

BA Chemistry with Teacher Licensure

BS Chemistry

BS Chemistry with Teacher Licensure

### *40.0801 Physics, General*

BS Physics

BS Physics with Teacher Licensure

### **Psychology**

#### *42.0101 Psychology, General*

BA Psychology

### **Social Sciences**

#### *45.0201 Anthropology*

BA Anthropology

BA Anthropology with Teacher Licensure in Social Studies

#### *45.0601 Economics, General*

BA Economics

BA Economics with Teacher Licensure in Social Studies

#### *45.1001 Political Science and Government, General*

BA Political Science

BA Political Science w/ Teacher Licensure in Social Studies

#### *45.1101 Sociology*

BA Sociology

BA Sociology with Teacher Licensure in Social Studies

### **Visual and Performing Arts**

#### *50.0102 Digital Arts*

BA New Media

#### *50.0501 Drama and Dramatics/Theater Arts, General*

BA Drama

BA Drama with Teacher Licensure

#### *50.0701 Art/Art Studies, General*

BA Art

BA Art with Teacher Licensure

#### *50.0702 Fine/Studio Arts, General*

BFA Art

#### *50.0703 Art History, Criticism and Conservation*

BA Art History

#### *50.0901 Music, General*

BA Music

#### *50.0910 Jazz Studies*

BFA Jazz and Contemporary Music

#### *50.0913 Music Technology*

BS Music Technology

### **Health Professions & Related Sciences**

#### *51.2207 Public Health Education and Promotion*

BS Health and Wellness Promotion

BS Health and Wellness Promotion with Teacher Licensure

### **Business, Mgmt., Marketing & Related Support Services**

#### *52.0201 Business Administration and Management, General*

BS Management

#### *52.0301 Accounting*

BS Accounting

### **History**

#### *54.0101 History, General*

BA History

BA History with Teacher Licensure in Social Studies

Table 25  
Enrollment by Major  
Degree Seeking Undergraduates - Spring Semesters\*

Major	2014	2015	2016	2017	2018	5-Year % Change
Accounting	50	58	48	48	44	-12.0
Anthropology	23	31	19	22	32	39.1
Art	92	97	90	88	89	-3.3
Art History	17	16	12	16	16	-5.9
Atmospheric Sciences	26	32	30	32	32	23.1
Biology	133	145	133	141	141	6.0
Chemistry	53	58	44	66	67	26.4
Classics	23	13	13	11	12	-47.8
Computer Science	70	73	66	77	87	24.3
Drama	35	31	17	23	27	-22.9
Economics	47	59	49	47	53	12.8
Education	70	65	39	70	95	35.7
English	129	126	104	98	100	-22.5
Environmental Studies	180	170	138	150	164	-8.9
French	27	30	25	16	14	-48.1
German	6	12	11	8	8	33.3
Health & Wellness Promotion	139	141	134	122	122	-12.2
History	77	78	53	63	77	0.0
Industrial Engineering Mgmt	1					
Interdisciplinary Studies	103	74	58	43	58	-43.7
Jazz and Contemporary Music	5	12	9	7	12	140
Management	123	109	121	148	154	25.2
Mass Communication	87	114	94	100	101	16.1
Mathematics	91	90	75	64	64	-29.7
Mechatronics	59	82	85	110	114	93.2
Music	17	6	2	8	12	-29.4
Music Technology	38	39	35	40	28	-26.3
New Media	70	81	86	104	98	40.0
Philosophy	25	19	14	14	18	-28.0
Physics	21	21	18	18	24	14.3
Political Science	83	70	60	54	72	-13.3
Psychology	232	199	149	135	161	-30.6
Religious Studies	27	16	12	11	14	-48.1
Sociology	71	69	55	73	64	-9.9
Spanish	46	48	31	23	26	-43.5
Women, Gender & Sexuality Studies	16	16	10	16	17	6.3

NOTE: Degree-seeking students *formally* admitted to the teacher licensure program are double counted in "Education" and their primary major. Students with double majors are counted in each major.

\* Does not include extension students

Table 26  
Degrees Conferred by Academic Area and Major

Academic Area	Major	2013-14		2014-15		2015-16		2016-17		2017-18	
		N	%	N	%	N	%	N	%	N	%
Social Sciences	Accounting	19	2.5	22	2.9	19	2.5	17	2.2	23	2.9
	Anthropology	12	1.6	9	1.2	12	1.6	9	1.2	7	0.9
	Economics	24	3.2	15	2.0	18	2.3	23	3.0	19	2.4
	Health and Wellness Promotion	45	5.9	46	6.1	46	6.0	53	7.0	46	5.7
	Industrial Engineering Mgmt			1	0.1						
	Management	57	7.5	48	6.4	44	5.7	56	7.4	77	9.6
	Mass Communication	32	4.2	34	4.5	46	6.0	46	6.1	48	6.0
	Political Science	27	3.6	26	3.4	25	3.3	26	3.4	23	2.9
	Psychology	108	14.2	99	13.1	93	12.1	87	11.5	91	11.3
	Sociology	26	3.4	25	3.3	24	3.1	29	3.8	34	4.2
	Area Total		350	46.1	325	43.0	327	42.6	346	45.6	368
Natural Sciences	Atmospheric Science	9	1.2	8	1.1	9	1.2	10	1.3	11	1.4
	Biology	32	4.2	49	6.5	44	5.7	43	5.7	41	5.1
	Chemistry	11	1.4	17	2.3	23	3.0	25	3.3	27	3.4
	Computer Science	14	1.8	13	1.7	26	3.4	26	3.4	25	3.1
	Engineering	12	1.6	15	2.0	27	3.5	28	3.7	22	2.7
	Environmental Studies	64	8.4	59	7.8	57	7.4	59	7.8	54	6.7
	Mathematics	25	3.3	30	4.0	30	3.9	27	3.6	32	4.0
	New Media	18	2.4	27	3.6	28	3.7	47	6.2	45	5.6
	Physics	4	0.5	9	1.2	7	0.9	3	0.4	8	1.0
	Area Total		189	24.9	227	30.1	251	32.7	268	35.3	265
Humanities	Art	46	6.1	34	4.5	34	4.4	36	4.7	32	4.0
	Art History	8	1.1	6	0.8	4	0.5	8	1.1	2	0.2
	Classics	7	0.9	7	0.9	4	0.5	3	0.4	8	1.0
	Drama	16	2.1	14	1.9	9	1.2	3	0.4	7	0.9
	English	46	6.1	43	5.7	48	6.3	43	5.7	43	5.4
	French	7	0.9	9	1.2	7	0.9	6	0.8	8	1.0
	German	5	0.7	2	0.3	4	0.5	3	0.4	2	0.2
	History	28	3.7	25	3.3	31	4.0	20	2.6	32	4.0
	Jazz and Contemporary Music			3	0.4	2	0.3	6	0.8	4	0.5
	Music	10	1.3	7	0.9			1	0.1	4	0.5
	Music Technology	10	1.3	14	1.9	11	1.4	17	2.2	14	1.7
	Philosophy	13	1.7	6	0.8	7	0.9	3	0.4	5	0.6
	Religious Studies	13	1.7	9	1.2	4	0.5	5	0.7	3	0.4
	Spanish	15	2.0	15	2.0	16	2.1	15	2.0	13	1.6
Area Total		224	29.5	194	25.7	181	23.6	169	22.3	177	22.0
Interdiscip.	Interdisciplinary Studies	52	6.8	40	5.3	36	4.7	16	2.1	28	3.5
	Women, Gender, Sexuality	5	0.7	7	0.9	3	0.4	3	0.4	8	1.0
	Area Total		57	7.5	47	6.2	39	5.1	19	2.5	36
Graduate	Liberal Arts (MLA)	10	1.3	9	1.2	19	2.5	6	0.8	9	1.1
	University Total		760	100.0	755	100.0	767	100.0	759	100.0	803

Table 27  
Undergraduate Class Size: Fall 2018\*

Dept/Program	Lecture/Seminar				Lab/Studio				Internship/Field Exp				Individual Study/Research			
	N	Section Size			N	Section Size			N	Section Size			N	Section Size		
	Sections	Mean	Min	Max	Sections	Mean	Min	Max	Sections	Mean	Min	Max	Sections	Mean	Min	Max
Africana Studies	2	22.0	20	24									1	1.0	1	1
Art & Art History	8	19.6	3	25	28	11.0	2	17	1	8.0	8	8	5	1.4	1	2
Arts 310	9	18.8	15	22												
Atmospheric Sci	13	11.5	3	21									2	2.5	1	4
Biology	26	21.3	10	51	21	14.5	1	20					10	1.7	1	5
Chemistry	21	26.1	8	36	17	21.9	8	30					1	1.0	1	1
Classics	10	16.0	5	23												
Computer Science	23	19.7	6	38	3	20.0	18	22					4	3.5	1	6
Dance	2	16.0	7	25	6	10.7	6	25								
Drama	10	12.7	5	21	6	10.2	4	18	1	1.0	1	1	2	1.5	1	2
Economics	24	20.5	9	27									1	1.0	1	1
Education	23	13.9	2	26	3	21.7	16	25					2	1.0	1	1
Engineering	14	34.6	10	101	7	16.6	6	31								
Envr Studies	45	18.3	4	25					1	2.0	2	2	1	1.0	1	1
Health & Wellness	27	26.9	12	82	6	20.0	19	21	1	20.0	20	20	13	1.2	1	2
History	33	18.4	2	30	2	18.0	16	20	1	11.0	11	11	10	1.8	1	4
Honors Program	18	17.1	7	23					1	7.0	7	7	2	1.0	1	1
Humanities													1	1.0	1	1
Interdisciplinary																
Studies	63	21.0	8	24												
Literature	12	18.2	13	24									6	1.7	1	4
Mass Comm	38	15.4	5	24									4	1.0	1	1
Mathematics	17	20.6	11	40												
Mgt & Accountancy	40	26.3	7	34									5	3.4	1	6
Modern Lang & Lit	38	18.0	6	25					1	8.0	8	8	3	1.0	1	1
Music	12	17.9	3	26	30	10.3	2	37	1	1.0	1	1				
New Media	18	17.0	12	25	2	10.5	10	11	1	7.0	7	7	4	1.5	1	3
Philosophy	8	16.1	5	23												
Physics	25	27.7	9	62	9	16.8	2	22					4	2.5	2	4
Political Science	15	19.2	11	29									2	1.5	1	2
Psychology	28	25.4	6	44									9	1.4	1	3
Religious Studies	9	16.6	7	21									1	1.0	1	1
Soc & Anth	22	22.7	11	29									2	1.0	1	1
Wm,Gen,& Sexuality	3	20.3	18	25					1	3.0	3	3				
UNCA Total	656	20.5	2	101	140	14.2	1	37	10	6.8	1	20	95	1.7	1	6

Note: does not include SABR, Student Teaching, Recitals-Ensembles, or Physical Activity Sections

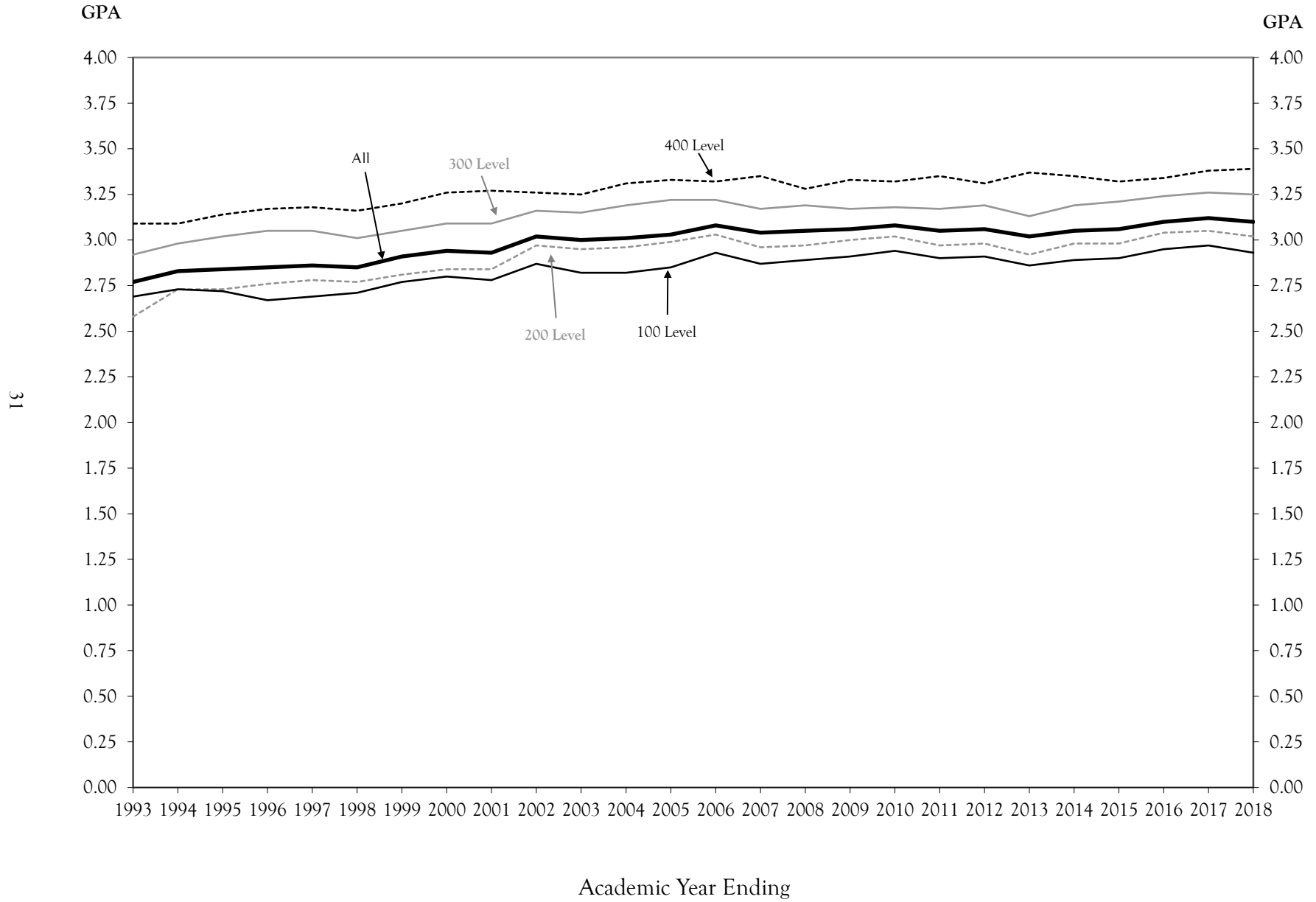
\* Does not include extension students.

Table 28  
Grade Distribution by Course Level and Academic Year\*

Level	Acad Year Ending	N Grades	Weighted GPA	Grade										
				A %	A- %	B+ %	B %	B- %	C+ %	C %	C- %	D+ %	D %	F %
100	2009	10,569	2.91	28.3	11.3	9.3	18.2	6.7	4.4	9.5	2.8	1.0	3.7	4.9
	2010	11,269	2.94	28.0	11.7	9.9	18.2	6.2	4.5	9.7	3.2	0.8	3.5	4.4
	2011	11,044	2.90	28.7	11.3	8.9	17.6	6.7	4.5	9.1	3.1	0.8	4.2	5.0
	2012	10,101	2.91	25.7	12.5	10.1	17.8	7.2	4.8	9.3	3.4	1.0	3.6	4.5
	2013	10,138	2.86	26.7	12.5	10.3	16.4	6.5	5.0	8.2	3.3	1.2	3.7	6.3
	2014	10,789	2.89	28.4	11.4	9.8	16.0	7.4	4.8	8.6	3.0	1.3	3.9	5.4
	2015	10,114	2.90	26.9	12.5	9.9	16.4	7.0	5.1	8.6	3.2	1.1	3.9	5.6
	2016	10,742	2.95	28.1	13.3	10.2	15.7	7.2	4.6	8.3	2.8	1.2	3.9	4.6
	2017	10,826	2.97	29.6	13.1	10.3	15.1	7.1	4.6	7.3	3.1	1.0	3.5	5.3
	2018	9,893	2.93	28.6	12.5	9.9	15.8	6.9	4.9	7.4	3.4	1.3	3.8	5.7
200	2009	5,003	3.00	28.7	12.6	10.5	17.6	6.8	4.8	7.6	2.6	1.1	3.4	4.2
	2010	5,404	3.02	27.2	14.2	10.3	16.8	8.0	5.1	8.8	2.6	0.7	2.6	3.6
	2011	5,850	2.97	29.2	12.9	10.0	15.8	7.6	4.9	7.4	3.1	0.9	3.3	5.0
	2012	5,990	2.98	25.5	14.5	11.1	16.6	7.8	4.7	8.4	3.1	1.1	3.5	3.7
	2013	5,829	2.92	25.8	13.4	10.0	17.3	7.7	5.0	8.7	2.4	1.1	3.5	5.2
	2014	5,924	2.98	25.5	13.5	11.5	17.2	7.7	5.3	8.4	3.2	0.8	3.0	4.1
	2015	6,256	2.98	25.0	14.6	11.5	16.1	7.8	5.5	8.3	3.0	1.2	2.7	4.3
	2016	6,521	3.04	27.5	14.8	11.6	15.6	7.2	5.4	6.9	2.7	1.0	3.0	4.2
	2017	6,415	3.05	26.1	16.2	11.4	15.5	7.5	6.0	6.6	3.3	1.1	2.7	3.4
	2018	6,562	3.02	27.0	14.1	11.0	15.4	8.1	5.8	6.9	3.5	1.3	3.2	3.6
300	2009	8,936	3.17	32.4	14.9	11.5	18.3	6.6	3.2	5.7	2.1	0.3	1.7	3.3
	2010	9,550	3.18	33.2	15.5	10.9	17.4	6.3	3.4	6.0	1.6	0.5	1.7	3.4
	2011	9,377	3.17	32.5	15.8	11.3	17.1	6.7	3.6	5.3	2.2	0.4	1.7	3.5
	2012	8,873	3.19	31.7	16.0	12.0	16.0	7.0	4.0	6.0	1.7	0.7	1.8	3.1
	2013	8,819	3.13	32.7	14.8	11.0	16.5	6.3	3.2	6.0	2.2	0.7	2.1	4.6
	2014	8,549	3.19	33.2	15.8	11.5	16.6	5.5	4.0	5.8	1.8	0.6	1.7	3.5
	2015	8,348	3.21	33.0	15.6	12.0	16.2	7.1	3.7	5.7	2.0	0.5	1.6	2.5
	2016	7,890	3.24	34.9	15.5	12.4	15.3	7.0	3.7	4.5	1.9	0.7	1.5	2.6
	2017	7,683	3.26	36.2	15.6	11.3	15.0	6.8	3.5	5.3	2.1	0.6	1.4	2.2
	2018	7,889	3.25	36.5	15.6	11.2	14.3	6.6	4.0	4.7	2.3	0.7	1.6	2.4
400	2009	2,939	3.33	41.5	14.3	9.9	15.8	4.9	2.8	6.0	1.5	0.2	1.0	2.1
	2010	3,167	3.32	43.6	13.8	9.0	15.1	4.8	2.6	5.3	1.5	0.2	1.5	2.7
	2011	3,331	3.35	43.4	13.7	9.4	14.7	6.0	2.4	5.2	1.2	0.3	1.4	2.3
	2012	3,167	3.31	41.5	14.1	9.9	14.7	5.5	2.9	5.1	1.7	0.4	1.6	2.7
	2013	3,276	3.37	45.4	12.9	10.0	14.6	4.9	1.9	5.0	1.2	0.4	1.2	2.5
	2014	3,330	3.35	45.3	14.2	9.5	12.6	5.6	2.8	4.8	1.5	0.5	1.1	2.2
	2015	3,100	3.32	42.7	13.6	10.0	15.2	5.4	2.6	4.6	1.5	0.5	1.4	2.5
	2016	3,201	3.34	42.8	15.2	10.2	13.2	5.6	2.8	4.5	1.9	0.3	1.4	1.9
	2017	3,154	3.38	43.8	15.8	9.6	14.1	4.7	2.9	4.0	1.7	0.6	1.0	1.8
	2018	3,026	3.39	44.4	14.1	11.2	13.5	4.9	2.4	4.7	1.7	0.4	1.3	1.4
500+	2009	80	3.70	57.5	20.0	10.0	10.0	1.3						1.3
	2010	99	3.67	61.6	17.2	4.0	7.1	5.1	3.0	1.0				1.0
	2011	138	3.68	63.0	10.9	10.9	8.7	3.6		2.2		0.7		
	2012	123	3.67	51.2	24.4	14.6	6.5	0.8	0.8					1.6
	2013	131	3.71	61.8	14.5	12.2	4.6	3.1	1.5	1.5				0.8
	2014	100	3.78	63.0	20.0	7.0	8.0	1.0	1.0					
	2015	93	3.62	54.8	23.7	6.5	4.3	3.2	2.2	4.3				1.1
	2016	89	3.79	69.7	12.4	10.1	5.6	2.2						
	2017	73	3.63	58.9	13.7	12.3	6.8	1.4	1.4	4.1				1.4
	2018	79	3.81	77.2	7.6	8.9	3.8	1.3						1.3
All	2009	27,527	3.06	31.2	13.0	10.3	17.9	6.5	3.9	7.5	2.4	0.7	2.7	3.9
	2010	29,489	3.07	31.3	13.6	10.2	17.3	6.4	4.1	7.9	2.4	0.6	2.5	3.7
	2011	29,740	3.05	31.8	13.3	9.9	16.7	6.8	4.1	7.1	2.6	0.6	2.9	4.2
	2012	28,254	3.06	29.4	14.3	10.9	16.6	7.1	4.3	7.5	2.6	0.8	2.8	3.7
	2013	28,193	3.02	30.7	13.5	10.4	16.3	6.5	4.1	7.2	2.5	0.9	2.8	5.1
	2014	28,692	3.05	31.3	13.5	10.6	16.0	6.7	4.4	7.2	2.5	0.9	2.7	4.2
	2015	27,911	3.06	30.1	14.0	10.9	16.1	7.0	4.5	7.2	2.6	0.9	2.6	4.0
	2016	28,443	3.10	31.6	14.5	11.1	15.3	7.0	4.3	6.5	2.5	0.9	2.7	3.6
	2017	28,151	3.12	32.3	14.8	10.7	15.1	6.8	4.4	6.2	2.7	0.9	2.4	3.6
	2018	27,449	3.10	32.4	14.0	10.7	15.0	6.9	4.6	6.2	2.9	1.0	2.7	3.7

\* Does not include extension students.

Figure 3  
 Weighted Average of All Grades Awarded by Academic Year and Course Level\*



\* Does not include extension students



Table 29  
Intercollegiate Athletics: 2018\*

Teams	Men	Women	Last Champ.	Last Record		
				W	L	T
Baseball	29		2006	13	38	
Basketball Men	14		2018	21	13	
Basketball Women		14	2017	17	16	
Soccer Men	26		2001	2	15	1
Soccer Women		20	2006	6	10	2
Tennis Men	7		1986	7	13	
Tennis Women		9	1989	9	11	
Volleyball		17	2009	13	15	
Swimming Women		24		3	5	
Outdoor Track Men	18				7th in Big South	
Outdoor Track Women		17			6th in Big South	
Indoor Track Men	18				7th in Big South	
Indoor Track Women		17			8th in Big South	
Cross Country Men	14				4th in Big South	
Cross Country Women		9	1999		4th in Big South	
Golf Women		6			5th in Big South	

\* Does not include extension students

**Athletic Facilities**

Kimmel Arena (Basketball)	3,200
Justice Center (Volleyball)	1,100
Greenwood Field (Soccer)	1,000
Greenwood Field (Baseball)	1,000

**National Collegiate Athletic Association Info.**  
 NCAA Division I  
 Big South Conference  
 Nickname: Bulldogs  
 Colors: Royal Blue and White

**Big South Conference Members**

1. UNC Asheville
2. Charleston Southern University
3. Winthrop University
4. Radford University
5. Liberty University
6. High Point University
7. Presbyterian College
8. Gardner-Webb
9. Campbell
10. Longwood
11. Hampton University\*
12. USC Upstate\*

\*Will join Big South in 2018-19

Table 30  
Student Financial Aid by Source  
Three-Year Trend

	2015-2016		2016-2017		2017-2018	
	Awards	Amount	Awards	Amount	Awards	Amount
<b>Federal Funds</b>						
DC Tuition Assistance Grant (TAG)	0	0	4	34099	3	25000
FDLP - PLUS	165	1,814,569	190	2,101,185	190	2,136,880
FDLP - Unsubsidized Stafford	1,630	6,157,142	1,630	6,173,343	1,580	6,026,434
Federal Ford Direct Loan Program (FDLP) - Subsidized	1,523	5,921,688	1,535	5,987,629	1,463	5,898,913
Federal Pell Grant	1,414	5,666,352	1,364	5,408,552	1,386	5,895,309
Federal Perkins Loan	40	118,697	43	131,018	14	49,170
Federal Supplemental Educational Opportunity Grant	166	74,931	171	71,542	196	87,195
Federal Teach	3	9,280	3	9,320	0	0
Federal Work Study (FWS)	48	97,086	60	111,141	45	92,615
Sub-total	4,989	19,859,745	5,000	20,027,828	4,877	20,211,516
<b>State Funds</b>						
Appropriated Grant (Non-Service Scholarship)	505	223,314	500	223,405	512	261,066
Education Lottery Scholarship	282	365,091	337	441,226	299	378,121
Escheats	0	0	0	0	2	1,700
NC REACH	1	4,800	2	21,213	4	33,770
North Carolina TAP	2	7,673	2	8,440	3	9,784
Other North Carolina Scholarship or Grant	3	12,000	3	7,700	2	9,406
UNC Campus Scholarship Program	10	17,957	11	17,957	10	16,117
UNC Need Based Grant	1,122	2,482,487	986	2,153,803	948	2,123,373
Sub-total	1,925	3,113,322	1,841	2,873,744	1,780	2,833,337
<b>Other Funds</b>						
Alternative Loan	0	0	0	0	2	6,500
Athletic Grant-in-Aid	210	1,995,275	216	2,241,673	224	2,366,171
Externally Administered Private Grant/Scholarship (Non-Need Based)	0	0	16	37,845	3	7,781
Forgiveable Education Loans for Service	3	21,000	4	28,750	3	24,000
Golden Leaf	10	28,500	12	34,500	12	33,000
Institutional Grant/Scholarship (Need Based)	200	420,495	212	431,664	313	478,266
Institutional Grant/Scholarship (Non-Need Based)	475	990,561	493	958,731	591	980,692
Need Based Campus Initiated Tuition Increase Grants	1,600	2,890,250	1,140	2,991,374	982	2,852,992
Other Institutional Scholarship or Grant	47	100,951	68	174,203	67	253,754
Other state aid, Non-NC based	3	2,100	3	4,600	3	5,050
Penn Family Scholarship	3	3,000	4	3,750	3	3,000
Sub-total	2,551	6,452,131	2,168	6,907,089	2,203	7,011,205
<b>Total</b>	<b>9,465</b>	<b>29,425,198</b>	<b>9,009</b>	<b>29,808,662</b>	<b>8,860</b>	<b>30,056,058</b>

\* Not all dollars under Other Funds are awarded by the Office of Financial Aid.

Table 31  
Students Receiving Financial Aid\*

Fall	N	Financial Aid			Percent of Students Receiving				Average Award	Avg Pct of Need Met	
		Apps	Offers	Awards	Loans	Grants	Scholarships	Aid Total			
2015	New Freshmen	735	636	543	543	53.2	57.3	19.3	73.9	10,020	79.0
	New Transfers	318	274	258	258	57.5	66.4	8.2	81.1	11,206	70.7
	New Non-Degree	134	31	29	29	17.9	4.5	2.2	21.6	7,694	68.7
	New Graduates	5	3	3	3	60.0	0.0	0.0	60.0	17,861	100.0
	Returning	90	54	53	53	53.3	48.9	3.3	58.9	10,932	73.7
	Continuing	2,500	1,799	1,724	1,724	48.5	50.7	19.0	69.0	10,709	75.5
	Total	3,782	2,797	2,610	2,610	49.2	51.5	17.2	69.0	10,580	75.6
2016	New Freshmen	666	585	520	520	55.1	56.5	27.9	78.1	10,905	79.4
	New Transfers	303	239	224	224	55.1	56.8	11.2	73.9	10,539	70.7
	New Non-Degree	131	39	33	33	22.9	0.8	1.5	25.2	8,448	77.3
	New Graduates	11	4	4	4	36.4	9.1	0.0	36.4	12,644	71.5
	Returning	96	54	52	52	36.5	34.4	5.2	54.2	8,548	59.5
	Continuing	2,508	1,838	1,765	1,765	49.8	47.5	20.2	70.4	11,129	74.8
	Total	3,715	2,759	2,598	2,598	49.9	47.8	19.7	69.9	10,944	75.0
2017	New Freshmen	648	575	519	488	52.9	55.2	21.5	75.3	10,502	77.6
	New Transfers	355	280	268	265	57.2	49.9	16.3	74.6	10,580	66.8
	New Non-Degree	102	21	20	19	16.7	2.0	1.0	18.6	10,557	59.1
	New Graduates	4	1	1	1	25.0	0.0	0.0	25.0	19,758	100.0
	Returning	72	46	43	43	45.8	44.4	4.2	59.7	11,013	67.7
	Continuing	2,538	1,894	1,832	1,812	50.1	49.1	22.7	71.4	11,545	73.4
	Total	3,719	2,817	2,683	2,628	50.3	48.8	20.9	70.7	11,223	73.2

\* Does not include extension students.

Table 32  
Intercollegiate Athletics Grants-In-Aid  
2017-18

	Male	Female	Total
Baseball	220,304		220,304
Basketball	393,338	440,992	834,330
Golf		109,000	109,000
Soccer	148,400	153,000	301,400
Swimming		151,565	151,565
Tennis	101,706	153,377	255,083
Track	133,889	108,995	242,884
Volleyball		193,048	193,048
Total	997,637	1,309,976	2,307,613

\* Does not include extension students.

Table 33  
Current Residence of Alumni by US Region, State and Nation

		2017	
		N	%
The South	Alabama	90	0.5
	Arkansas	26	0.1
	Florida	559	3.0
	Georgia	532	2.9
	Kentucky	70	0.4
	Louisiana	54	0.3
	Mississippi	25	0.1
	North Carolina	13,025	70.4
	South Carolina	589	3.2
	Tennessee	367	2.0
	Virginia	462	2.5
	West Virginia	31	0.2
	Region Total	15,830	85.6
Mid-Atlantic	Delaware	16	0.1
	District of Columbia	60	0.3
	Maryland	182	1.0
	New Jersey	72	0.4
	New York	245	1.3
	Pennsylvania	149	0.8
	Region Total	724	3.9
New England	Connecticut	38	0.2
	Maine	16	0.1
	Massachusetts	96	0.5
	New Hampshire	24	0.1
	Rhode Island	6	0.0
	Vermont	23	0.1
Region Total	203	1.1	
Midwest	Illinois	143	0.8
	Indiana	54	0.3
	Iowa	11	0.1
	Kansas	17	0.1
	Michigan	60	0.3
	Minnesota	32	0.2
	Missouri	40	0.2
	Nebraska	7	0.0
	North Dakota	5	0.0
	Ohio	102	0.6
	South Dakota	8	0.0
Wisconsin	41	0.2	
Region Total	520	2.8	
The Southwest	Arizona	52	0.3
	New Mexico	20	0.1
	Oklahoma	21	0.1
	Texas	190	1.0
	Region Total	283	1.5

Table 33  
Current Residence of Alumni by US Region, State and Nation

		2017	
		N	%
The West	Alaska	20	0.1
	California	290	1.6
	Colorado	196	1.1
	Hawaii	17	0.1
	Idaho	7	0.0
	Montana	20	0.1
	Nevada	29	0.2
	Oregon	108	0.6
	Utah	26	0.1
	Washington	123	0.7
	Wyoming	10	0.1
	Region Total	846	4.6
Territories	Puerto Rico	3	0.0
	Virgin Islands	1	0.0
	Region Total	4	0.0
International	Australia	3	0.0
	Bermuda	1	0.0
	Cameroon	1	0.0
	Canada	10	0.1
	Croatia	1	0.0
	Denmark	1	0.0
	Ecuador	3	0.0
	Egypt	2	0.0
	Finland	1	0.0
	France	3	0.0
	Germany	6	0.0
	Greece	1	0.0
	Hungary	1	0.0
	Indonesia	2	0.0
	Israel	2	0.0
	Italy	1	0.0
	Jamaica	1	0.0
	Japan	5	0.0
	Kenya	1	0.0
	Mexico	2	0.0
	Morocco	1	0.0
	Netherland Antilles	1	0.0
	Netherlands	2	0.0
	New Zealand	3	0.0
	Peru	1	0.0
	Singapore	2	0.0
	South Africa	1	0.0
	South Korea	3	0.0
	Spain	2	0.0
	Sweden	1	0.0
	Switzerland	1	0.0
	The Bahamas	1	0.0
	Turkey	3	0.0
	United Arab Emirates	1	0.0
United Kingdom	11	0.1	
Region Total	82	0.4	
Total		18,492	100.0

Note: Contact Ben Underwood in University Advancement for data beyond 2017.

Table 34  
Alumni by North Carolina Region and County

		2017	
		N	%
Western NC	Alleghany	6	0.0
	Ashe	14	0.1
	Avery	16	0.1
	Buncombe	5,697	43.8
	Burke	180	1.4
	Caldwell	68	0.5
	Cherokee	49	0.4
	Clay	21	0.2
	Graham	10	0.1
	Haywood	294	2.3
	Henderson	1,207	9.3
	Jackson	65	0.5
	Macon	59	0.5
	Madison	199	1.5
	McDowell	218	1.7
	Mitchell	49	0.4
	Polk	129	1.0
	Rutherford	159	1.2
	Surry	23	0.2
	Swain	26	0.2
	Transylvania	208	1.6
Watauga	55	0.4	
Wilkes	34	0.3	
Yancey	114	0.9	
	Region Total	8,900	68.4
Piedmont NC	Alamance	53	0.4
	Alexander	17	0.1
	Anson	5	0.0
	Cabarrus	96	0.7
	Caswell	10	0.1
	Catawba	136	1.0
	Chatham	90	0.7
	Cleveland	77	0.6
	Davidson	43	0.3
	Davie	28	0.2
	Durham	277	2.1
	Forsyth	322	2.5
	Franklin	19	0.1
	Gaston	135	1.0
	Granville	10	0.1
	Guilford	267	2.1
	Iredell	102	0.8
	Lee	7	0.1
	Lincoln	57	0.4
	Mecklenburg	629	4.8
	Montgomery	4	0.0
	Moore	39	0.3
	Orange	263	2.0
	Person	8	0.1
Randolph	31	0.2	
Richmond	6	0.0	

Table 34  
Alumni by North Carolina Region and County

		2017	
		N	%
	Rockingham	19	0.1
	Rowan	57	0.4
	Stanly	13	0.1
	Stokes	18	0.1
	Union	112	0.9
	Vance	5	0.0
	Wake	691	5.3
	Warren	2	0.0
	Yadkin	8	0.1
	Region Total	3,656	28.1
Eastern NC	Beaufort	5	0.0
	Bladen	2	0.0
	Brunswick	28	0.2
	Carteret	25	0.2
	Chowan	9	0.1
	Columbus	3	0.0
	Craven	21	0.2
	Cumberland	38	0.3
	Currituck	4	0.0
	Dare	18	0.1
	Duplin	4	0.0
	Edgecombe	6	0.0
	Halifax	2	0.0
	Harnett	14	0.1
	Hertford	1	0.0
	Hoke	4	0.0
	Hyde	1	0.0
	Johnston	30	0.2
	Lenoir	1	0.0
	Nash	10	0.1
	New Hanover	113	0.9
	Northampton	1	0.0
	Onslow	15	0.1
	Pamlico	2	0.0
	Pasquotank	5	0.0
	Pender	13	0.1
	Pitt	50	0.4
	Robeson	2	0.0
	Sampson	7	0.1
	Scotland	2	0.0
	Washington	2	0.0
	Wayne	12	0.1
	Wilson	10	0.1
	Region Total	460	3.5
Total		13,016	100.0

Note: Contact Ben Underwood in University Advancement for data beyond 2017.



## Faculty and Staff

Table 35

## Employees by Employment Status, Job Class, Sex and Race - Fall 2018

Job Class		Full-Time			Part-Time			Status
		Female	Male	Subtotal	Female	Male	Subtotal	Totals
Executive Administrative	White	17	15	32	0	0	0	32
	Black	1	3	4	0	0	0	4
	Hispanic	1	0	1	0	0	0	1
	Class Total	19	18	37	0	0	0	37
Faculty	White	83	101	184	35	48	83	267
	Black	3	6	9	0	0	0	9
	Hispanic	7	3	10	3	3	6	16
	Asian	10	4	14	2	0	2	16
	Pacific Isl	1	0	1	0	0	0	1
	Am Indian	0	1	1	0	1	1	2
	Multi-Racial	1	0	1	0	0	0	1
	Not Reported	1	0	1	2	5	7	8
Class Total	106	115	221	42	57	99	320	
Professional Admin Sta	White	80	68	148	3	2	5	153
	Black	8	6	14	0	0	0	14
	Hispanic	4	5	9	0	0	0	9
	Asian	2	1	3	0	0	0	3
	Multi-Racial	3	4	7	0	0	0	7
	Not Reported	0	1	1	0	0	0	1
	Class Total	97	85	182	3	2	5	187
Technical/Para Prof	White	35	31	66	1	0	1	67
	Black	2	1	3	0	0	0	3
	Hispanic	1	2	3	0	0	0	3
	Asian	1	0	1	0	0	0	1
	Class Total	39	34	73	1	0	1	74
Clerical Staff & Mgrs	White	66	5	71	5	0	5	76
	Black	4	1	5	0	0	0	5
	Hispanic	1	0	1	0	0	0	1
	Multi-Racial	1	0	1	0	0	0	1
	Class Total	72	6	78	5	0	5	83
Skilled Crafts & Mgrs	White	1	28	29	0	0	0	29
	Black	0	2	2	0	0	0	2
	Class Total	1	30	31	0	0	0	31
Service/Maint & Super	White	26	34	60	0	0	0	60
	Black	3	6	9	0	0	0	9
	Hispanic	1	1	2	0	0	0	2
	Multi-Racial	1	0	1	0	0	0	1
	Not Reported	1	0	1	0	0	0	1
	Class Total	32	41	73	0	0	0	73
Race Totals	White	308	282	590	44	50	94	684
	Black	21	25	46	0	0	0	46
	Hispanic	15	11	26	3	3	6	32
	Asian	13	5	18	2	0	2	20
	Pacific Isl	1	0	1	0	0	0	1
	Am Indian	0	1	1	0	1	1	2
	Multi-Racial	6	4	10	0	0	0	10
	Not Reported	2	1	3	2	5	7	10
	Class Total	366	329	695	51	59	110	805
Total UNCA								
		366	329	695	51	59	110	805

NOTE: Does not include Arboretum employees.

Table 36

Full-time Instructional Faculty by Rank, Sex and Tenure Status  
Five-Year Trend

Year	Rank	Male		Female		Total	
		N	Tenured	N	Tenured	N	Tenured
2014	Professor	40	40	19	19	59	59
	Assoc Professor	31	31	33	29	64	60
	Asst Professor	21	1	20	0	41	1
	Lecturer	22	0	21	0	43	0
	Research/Visiting	6	0	3	0	9	0
	Total	120	72	96	48	216	120
2015	Professor	41	41	20	20	61	61
	Assoc Professor	26	26	30	28	56	54
	Asst Professor	26	1	24	0	50	1
	Lecturer	23	0	22	0	45	0
	Research/Visiting	1	0	1	0	2	0
	Total	117	68	97	48	214	116
2016	Professor	44	43	19	19	63	62
	Assoc Professor	25	24	34	32	59	56
	Asst Professor	30	1	26	0	56	1
	Instructor			1	0	1	0
	Lecturer	20	0	21	0	41	0
	Research/Visiting	2	0			2	0
Total	121	68	101	51	222	119	
2017	Professor	51	49	19	19	70	68
	Assoc Professor	21	18	32	32	53	50
	Asst Professor	31	1	27	0	58	1
	Instructor			1	0	1	0
	Lecturer	16	0	24	0	40	0
	Research/Visiting	2	0			2	0
Total	121	68	103	51	224	119	
2018	Professor	46	45	20	20	66	65
	Assoc Professor	18	15	32	32	50	47
	Asst Professor	29	1	24	0	53	1
	Instructor			1	0	1	0
	Lecturer	19	0	28	0	47	0
	Research/Visiting	3	0	1	0	4	0
Total	115	61	106	52	221	113	

Table 37  
Full-time Instructional Faculty with Terminal Degrees by Rank and Department  
Fall 2018

Department	Professor		Associate Professor		Assistant Professor		Instructor		Lecturer		Total	
	Total N	Pct w/ TD	Total N	Pct w/ TD	Total N	Pct w/ TD	Total N	Pct w/ TD	Total N	Pct w/ TD	Total N	Pct w/ TD
Africana Studies	-	-	1	100.0	-	-	-	-	-	-	1	100.0
Art & Art History	2	100.0	5	100.0	2	100.0	-	-	4	100.0	13	100.0
Atmospheric Sci	4	100.0	-	-	-	-	-	-	-	-	4	100.0
Biology	5	100.0	2	100.0	2	100.0	-	-	2	0.0	11	81.8
Chemistry	2	100.0	3	100.0	1	100.0	-	-	4	100.0	10	100.0
Classics	2	100.0	1	100.0	-	-	-	-	1	100.0	4	100.0
Computer Science	1	100.0	1	100.0	3	100.0	-	-	2	100.0	7	100.0
Dance	-	-	-	-	1	100.0	-	-	-	-	1	100.0
Drama	1	100.0	2	100.0	-	-	-	-	1	100.0	4	100.0
Economics	2	100.0	1	100.0	3	100.0	-	-	1	0.0	7	85.7
Education	2	100.0	3	100.0	1	100.0	-	-	1	0.0	7	85.7
Engineering	2	100.0	-	-	-	-	-	-	-	-	2	100.0
English	5	100.0	3	66.7	5	100.0	-	-	4	0.0	17	70.6
Envr Studies	2	100.0	4	100.0	2	100.0	-	-	1	0.0	9	88.9
Health & Wellness	1	100.0	3	100.0	2	100.0	-	-	3	33.3	9	77.8
History	5	100.0	1	100.0	2	100.0	-	-	-	-	8	100.0
Humanities	-	-	-	-	-	-	1	0.0	3	33.3	4	25.0
Interdisciplinary Studies	2	100.0	1	100.0	4	100.0	-	-	-	-	7	100.0
Languages & Literatures	-	-	3	100.0	5	100.0	-	-	4	50.0	12	83.3
Mass Comm	1	100.0	1	100.0	1	100.0	-	-	3	33.3	6	66.7
Mathematics	5	100.0	2	100.0	2	100.0	-	-	3	0.0	12	75.0
Mgt & Accountancy	3	100.0	2	100.0	3	100.0	-	-	3	66.7	11	90.9
Music	2	100.0	2	100.0	2	100.0	-	-	3	0.0	9	66.7
New Media	1	100.0	2	100.0	1	100.0	-	-	3	66.7	7	85.7
Office of the Chancellor	1	100.0	-	-	-	-	-	-	-	-	1	100.0
Philosophy	4	100.0	-	-	1	100.0	-	-	-	-	5	100.0
Physics	3	100.0	-	-	2	100.0	-	-	1	0.0	6	83.3
Political Science	3	100.0	-	-	2	100.0	-	-	-	-	5	100.0
Psychology	2	100.0	4	100.0	5	100.0	-	-	-	-	11	100.0
Religious Studies	1	100.0	1	100.0	1	100.0	-	-	-	-	3	100.0
Soc & Anth	3	100.0	2	100.0	3	100.0	-	-	-	-	8	100.0
Total	67	100.0	50	98.0	56	100.0	1	0.0	47	44.7	221	87.3

Table 38  
Full-time Instructional Faculty Salaries by Rank  
Five-Year Trend

Year	Rank	N	Salary			
			Mean	Min	Max	Total Outlay
2014	Professor	59	85,306	68,035	125,148	5,033,069
	Associate Professor	64	73,068	61,786	114,711	4,676,368
	Assistant Professor	41	64,293	52,000	116,500	2,636,010
	Lecturer	43	51,857	35,608	96,202	2,229,867
	University Total	216	69,807	35,608	125,148	15,078,314
2015	Professor	61	87,764	72,035	126,898	5,353,586
	Associate Professor	56	75,947	65,083	119,989	4,253,010
	Assistant Professor	50	65,355	55,000	116,500	3,267,753
	Lecturer	45	54,482	42,000	100,091	2,451,676
	University Total	214	72,124	42,000	126,898	15,434,525
2016	Professor	63	92,943	77,674	132,945	5,855,409
	Associate Professor	59	79,881	67,268	125,759	4,712,987
	Assistant Professor	56	68,275	57,634	120,370	3,823,375
	Lecturer	41	55,877	42,000	105,612	2,290,948
	University Total	222	76,266	42,000	132,945	16,931,108
2017	Professor	70	93,407	76,189	150,000	6,538,492
	Associate Professor	53	80,031	65,954	125,759	4,241,641
	Assistant Professor	58	68,985	58,760	122,870	4,001,157
	Lecturer	40	55,685	42,000	108,390	2,227,390
	University Total	224	77,099	42,000	150,000	17,270,069
2018	Professor	66	94,729	77,843	152,778	6,252,136
	Associate Professor	50	80,726	67,774	113,966	4,036,316
	Assistant Professor	53	70,372	60,000	123,470	3,729,699
	Lecturer	47	56,206	43,830	120,300	2,641,670
	University Total	221	76,806	43,830	152,778	16,974,110

NOTE: Instructors, research and visiting professors are not shown in detail but are included in University Total

## Fiscal Resources

Table 39

## Current Fund Revenues and Expenditures: Five-Year Trend

Revenue Source	2013-14		2014-15		2015-16		2016-17		2017-18	
	Amount	Percent	Amount	Percent	Amount	Percent	Amount	Percent	Amount	Percent
Tuition and Fees	21,992,082	24.0	22,704,340	25.4	23,728,560	24.9	24,457,326	24.9	23,846,302	23.5
Grants and Contracts- operation	2,351,167	2.6	2,233,663	2.5	3,631,125	3.8	3,347,154	3.4	3,854,640	3.8
Sales and Services of Auxilary Ent.	10,149,164	11.1	10,989,850	12.3	10,988,924	11.5	11,226,554	11.4	11,187,046	11.0
Sales and Services of Educ. Activities	510,141	0.6	406,518	0.5	1,367,231	1.4	493,403	0.5	417,127	0.4
Other Operating Sources	1,519,536	1.7	1,499,086	1.7	1,708,920	1.8	1,899,866	1.9	1,808,259	1.8
State Appropriations	36,828,519	40.3	37,977,520	42.4	38,770,345	40.6	39,864,860	40.5	40,128,446	39.6
Grants - Nonoperating	8,742,041	9.6	9,108,008	10.2	9,302,491	9.7	9,262,754	9.4	9,424,931	9.3
Gifts	2,415,936	2.6	2,352,716	2.6	2,468,741	2.6	2,866,944	2.9	2,646,198	2.6
Investment Income	1,964,536	2.1	1,361,280	1.5	-90351	(0.1)	1887088.91	1.9	2454048.18	0.0
Other Nonoperating Revenue	888,068	1.0	520,872	0.6	804,958	0.8	519,379	0.5	516,083	0.5
Other Revenues and Additions	4,091,779	4.5	370,998	0.4	2,732,745	2.9	2,525,534	2.6	4,992,926	4.9
<b>Total Revenues &amp; Additions</b>	<b>91,452,969</b>		<b>89,524,851</b>		<b>95,413,689</b>		<b>98,350,864</b>		<b>101,276,006</b>	
<b>Expenses and other Deductions</b>										
Instruction	26,803,191	30.1	28,017,653	31.3	29,529,807	31.6	31,752,759	32.8	31,792,164	32.5
Research	1,340,271	1.5	1,646,570	1.8	1,978,445	2.1	2,107,654	2.2	1,868,061	1.9
Public Service	1,676,563	1.9	1,745,526	1.9	1,546,722	1.7	1,668,646	1.7	1,875,174	1.9
Academic Support	4,511,200	5.1	4,313,068	4.8	4,573,308	4.9	4,590,550	4.7	4,876,713	5.0
Student Services	5,167,503	5.8	5,288,120	5.9	5,495,047	5.9	5,605,596	5.8	5,744,913	5.9
Institutional Support	11,559,232	13.0	11,727,852	13.1	11,274,810	12.1	11,870,601	12.3	12,721,048	13.0
Operation & Maintenance of Plant	9,767,241	11.0	9,214,675	10.3	9,105,193	9.8	9,233,997	9.5	9,582,444	9.8
Depreciation	5,333,499	6.0	5,079,555	5.7	5,208,173	5.6	5,341,277	5.5	5,404,062	5.5
Scholarships and Fellowships	5,985,525	6.7	5,524,937	6.2	5,797,385	6.2	5,388,874	5.6	4,610,510	4.7
Auxiliary Enterprises	14,344,592	16.1	14,673,549	16.4	16,371,167	17.5	16,293,190	16.8	16,728,015	17.1
Nonoperating Exp. and Deduct.	2,597,388	2.9	2,366,049	2.6	2,437,688	2.6	2,946,071	3.0	2,515,924	2.6
<b>Total Expenses and Deductions</b>	<b>89,086,205</b>		<b>89,597,554</b>		<b>93,317,745</b>		<b>96,799,215</b>		<b>97,719,029</b>	

Source: IPEDS F-1 from UNC Asheville Financial Affairs

Table 40  
Operating Expenditures by Function  
2017-18

	Salaries & Benefits	Supplies & Materials	Services	Scholarships & Fellowships	Utilities	Depreciation	Total
Instruction	29,199,012	727,935	1,865,217				31,792,164
Research	1,406,274	115,292	346,495				1,868,061
Public Service	1,233,562	52,584	589,029				1,875,174
Academic Support	3,290,927	887,616	698,170				4,876,713
Student Services	4,180,821	174,816	1,389,275				5,744,913
Institutional Support	10,183,448	223,883	2,267,840		184		12,675,354
Operations & Maintenance/Plant	6,305,981	828,235	742,330		1,705,898		9,582,444
Student Financial Aid	39,190	4,690	1,814	4,610,510			4,656,204
Auxiliary Enterprises	7,094,529	1,730,176	7,134,327		768,984		16,728,015
Depreciation						5,404,062	5,404,062
<b>Total Operating Expenses</b>	<b>62,933,744</b>	<b>4,745,227</b>	<b>15,034,496</b>	<b>4,610,510</b>	<b>2,475,065</b>	<b>5,404,062</b>	<b>95,203,105</b>
Percent of Total	66%	5%	16%	5%	3%	6%	100%

Source: Controller's Office (unaudited)



Table 41  
Tuition and Fees per Year  
Full-Time Students

	Academic Year					5-Year Increase	5-Year Pct Change
	14-15	15-16	16-17	17-18	18-19		
<b>Undergraduate Tuition:</b>							
In-State	3,666	3,849	4,041	4,122	4,122	456	12.4
Out-of-State	18,537	19,463	20,436	20,845	20,845	2,308	12.5
<b>Graduate Tuition:</b>							
In-State	4,371	4,589	4,818	4,914	4,914	543	12.4
Out-of-State	18,885	19,829	20,820	21,236	21,236	2,351	12.4
<b>Total Fees:</b>	2,726	2,756	2,936	3,023	3,023	297	10.9
<b>Room (Double Occupancy):</b>							
Founders Hall	4,658	4,658	4,890	5,134	5,288	630	13.5
Mills Hall	4,658	4,658	4,890	5,134	5,288	630	13.5
South Ridge	4,658	4,658	4,890	5,134	5,288	630	13.5
West Ridge	4,658	4,658	4,890	5,134	5,288	630	13.5
Governor's Hall	4,658	4,658	4,890	5,134	5,288	630	13.5
Overlook Hall	4,790	4,790	5,030	5,280	5,438	648	
Moore Hall**					5,288	N/A	
Woods Hall*					7,156	N/A	
Woods Hall - Year Round*					9,142	N/A	
<b>Room (Single Occupancy):</b>							
Governor's Hall	5,926	5,926	6,222	6,532	6,728	802	13.5
Governor's Village	6,100	6,100	6,406	6,726	6,728	628	10.3
Overlook Hall	6,100	6,100	6,406	6,726	6,928	828	13.6
Moore Hall**					6,728	N/A	
Woods Hall*					8,056	N/A	
Woods Hall - Year Round*					10,292	N/A	
<b>Board:</b>							
Meal Plan	3,674	3,674	3,856	3,972	4,092	418	11.4

Source: Finance & Operations

\* Woods Hall opened in fall 2018.

\*\* Moore Hall offered as a double occupancy option & no longer offered as year-round, as of fall 2018.

Table 42  
Distance Education Tuition and Fees  
Academic Year 2017-18

<b>Tuition (per hour rate):</b>	
Resident undergraduate	139.26
Non-resident undergraduate	704.22
Resident graduate	240.88
Non-resident graduate	1,040.98
<b>Ed/Tech Fee per credit hour</b>	<b>16.55</b>

Source: Director of Student Accounts

Table 43  
The University of North Carolina  
Tuition and Fees Applicable to All Regular Full-Time Undergraduate Students  
2017-18

School	Tuition		General Fees						Debt	Total		Total
	Resident	Non-Resident	Athletics	Health Services	Student Activities	Educational & Tech.	Campus Security	Total General Fees	Service	Total Fees	Resident Tuition & Fees	Non-Resident Tuition & Fees
									Fee			
NC State University	6,535.00	25,878.00	232.00	407.00	679.32	439.28	30.00	1,787.60	572.00	2,359.60	8,894.60	28,237.60
UNC-Chapel Hill	7,019.00	33,202.00	279.00	400.15	397.97	444.86	30.00	1,551.98	185.85	1,737.83	8,756.83	34,939.83
East Carolina University	4,452.00	20,729.00	723.00	263.00	694.00	395.00	30.00	2,105.00	460.00	2,565.00	7,017.00	23,294.00
NC A & T State University	3,540.00	16,750.00	845.00	338.50	714.25	449.06	30.00	2,376.81	588.00	2,964.81	6,504.81	19,714.81
UNC Charlotte	3,812.00	17,246.00	824.00	243.00	632.00	592.00	30.00	2,321.00	720.00	3,041.00	6,853.00	20,287.00
UNC Greensboro	4,422.00	19,581.00	761.00	302.00	550.00	446.00	30.00	2,089.00	707.00	2,796.00	7,218.00	22,377.00
Appalachian State University	4,242.00	19,049.00	760.00	325.00	646.00	576.00	30.00	2,337.00	634.00	2,971.00	7,213.00	22,020.00
Fayetteville State University	2,982.00	14,590.00	718.00	237.00	565.00	382.00	30.00	1,932.00	335.00	2,267.00	5,249.00	16,857.00
NC Central University	3,728.00	16,435.00	847.00	267.66	476.40	428.15	30.00	2,049.21	570.00	2,619.21	6,347.21	19,054.21
UNC Pembroke	1,000.00	5,000.00	747.52	190.00	679.84	528.91	30.00	2,176.27	240.00	2,416.27	3,416.27	7,416.27
UNC Wilmington	4,443.00	18,508.00	749.55	219.00	687.95	494.24	30.00	2,180.74	376.00	2,556.74	6,999.74	21,064.74
Western Carolina University	1,000.00	5,000.00	756.00	306.00	618.00	544.00	30.00	2,254.00	523.00	2,777.00	3,777.00	7,777.00
Winston-Salem State University	3,401.00	13,648.00	745.00	267.00	530.70	416.46	30.00	1,989.16	423.00	2,412.16	5,813.16	16,060.16
UNC Asheville	4,122.00	20,845.00	830.00	368.00	768.00	490.00	30.00	2,486.00	394.00	2,880.00	7,002.00	23,725.00
Elizabeth City State University	1,000.00	5,000.00	878.87	255.03	703.00	326.00	30.00	2,192.90	a€“	2,192.90	3,192.90	7,192.90
UNC School of the Arts	6,497.00	22,640.00	N/A	882.00	748.00	704.00	30.00	2,364.00	a€“	2,364.00	8,861.00	25,004.00

49

(1) Does not include High School

\* In addition to the fees above, the Board also authorized a \$1 ASG fee which is not included in the total fees.

Source: [https://www.northcarolina.edu/sites/default/files/tuition\\_and\\_fees\\_ug\\_032918.pdf](https://www.northcarolina.edu/sites/default/files/tuition_and_fees_ug_032918.pdf)

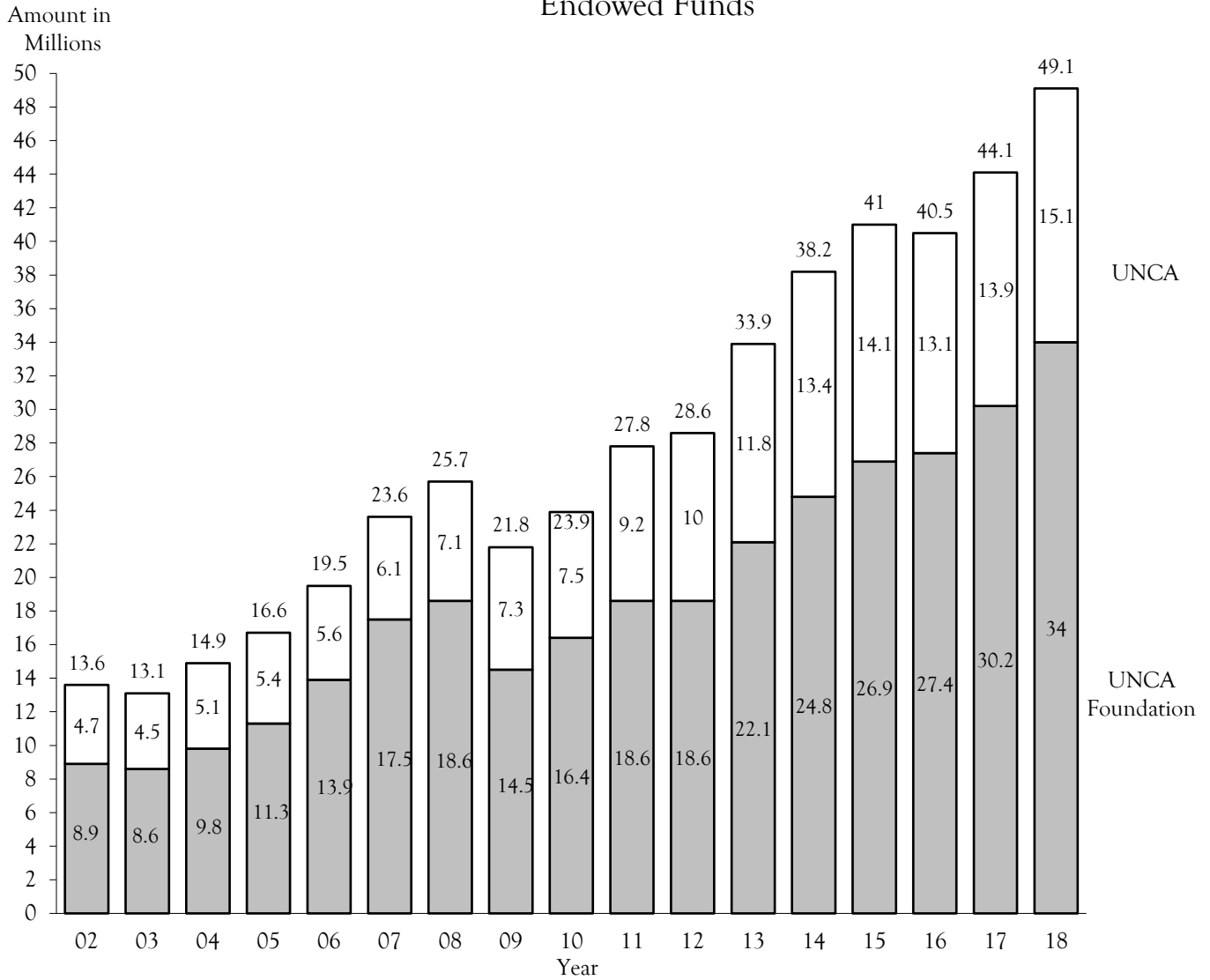
Table 44

External Grants and Contracts Funding Amounts by Fiscal Year

	FY 2009	FY 2010	FY 2011	FY 2012	FY 2013	FY 2014	FY 2015	FY 2016	FY 2017	FY 2018
Total Submissions	44	35	35	35	42	47	44	45	83	80
Total Awards	30	18	24	19	30	34	27	30	52	68
Num of Different Investigators	24	48	42	35	39	41	50	37	57	83
Total Amount Awarded	\$1,990,980	\$2,706,600	\$2,953,222	\$1,323,548	\$1,685,715	\$1,466,264	\$3,996,536	\$3,331,486	\$2,068,356	\$3,427,403

Source: UNC Asheville Sponsored Scholarship and Programs

Figure 4  
Endowed Funds



Source: Controller's Office

Table 45  
Source of Outright Gift Income by Year

	2011-12	2012-13	2013-14	2014-15	2015-16	2016-17	2017-18
Alumni	194,536	211,321	223,812	242,937	257,763	390,888	201,799
Parents	103,361	104,286	104,472	158,209	136,187	153,829	151,735
Other Individuals	575,259	507,162	732,094	985,311	4,081,697	2,069,554	4,591,729
Foundations	659,890	2,461,588	388,622	142,538	1,194,992	778,247	946,339
Corporations	1,848,619	690,657	354,549	1,182,415	1,065,845	2,049,032	1,350,666
Religious Organizations	2,200	1,450	550	1,400	3,360	4,194	600
Fundraising Consortia					13,640	21,218	500
Other Organizations	104,556	152,106	165,158	242,841	70,411	76,618	152,165
Total Giving*	3,488,421	4,128,570	1,969,257	2,955,651	6,823,895	5,543,580	7,395,533

\*Deferred giving not included

Source: University Advancement

Table 46  
Alumni Donations

Fiscal Year	# Alumni of Record	Number Donors	Total Giving*	Giving Rate
2006-07	10,990	1,044	\$265,488	9.5%
2007-08	11,578	963	\$163,500	8.3%
2008-09	12,213	891	\$179,640	7.3%
2009-10	14,213	894	\$275,461	6.3%
2010-11	15,321	1,016	\$209,641	6.6%
2011-12*	14,513	1,100	\$194,536	7.6%
2012-13	15,305	1,277	\$211,321	8.3%
2013-14	16,037	1,483	\$223,812	9.2%
2014-15	16,733	1,492	\$242,937	8.9%
2015-16	17,565	1,449	\$257,763	8.2%
2016-17	18,141	1,101	\$390,888	6.0%
2017-18	18,343	742	\$215,914	4.0%

*Deferred giving not included*

Source: *University Advancement*

\* Note: 2011-12 reflects the first year of transition to reporting statistics using methodology provided by the Council for Advancement and Support of Education (CASE) per direction from UNC General Administration.

Table 47  
Outright Gift Income Summary

	2012-13	2013-14	2014-15	2015-16	2016-17	2017-18
<b>Gifts for Current Operations</b>						
Unrestricted	289,330	160,642	177,014	267,818	239,322	223,894
Restricted						
Academic Divisions	63,557	129,648	81,984	1,646,017	1,295,705	626,491
Faculty & Staff Compensation						0
Research	9,020	12,576	5,565	4,626	117,951	263,295
Public Service & Extension	38,628	37,152	73,318	151,096	1,222,000	1,460,533
Library	26,459	300	95	121,841	1,210	1,075
Operation and Maint. of Plant	26,400	18,952	38,480	9,768		1,160
Student Financial Aid	221,814	475,444	337,794	670,930	733,350	942,226
Athletics	404,454	419,589	494,276	454,016	421,803	585,197
Other	203,838	65,006	137,830	178,440	79,660	42,558
<b>Total Current Operations</b>	<b>1,283,500</b>	<b>1,319,309</b>	<b>1,346,356</b>	<b>3,504,552</b>	<b>3,871,679</b>	<b>4,146,429</b>
<b>Gifts for Capital Purposes</b>						
Property, Building, Equipment	351,751	33,507	554,407	77,084	29,718	42,663
Endowment - Unrestricted						2,000
Endowment - Restricted	2,493,319	612,293	1,048,570	3,235,509	1,396,111	3,204,441
Loan Funds		4,148	6,318	6,750	6,750	0
<b>Total Capital Purposes</b>	<b>2,845,070</b>	<b>649,948</b>	<b>1,609,295</b>	<b>3,319,343</b>	<b>1,432,579</b>	<b>3,249,104</b>
<b>Total Outright Giving</b>	<b>4,128,570</b>	<b>1,969,257</b>	<b>2,955,651</b>	<b>6,823,895</b>	<b>5,543,580</b>	<b>7,395,533</b>

Source: *University Advancement*

Table 48  
Building Inventory  
Fall 2017

	Year Constructed	Building Cost	Replacement Cost	Accessible (Sq. Ft.)	Assignable (Sq. Ft.)	Gross (Sq. Ft.)
<i>Academic and Administrative</i>						
Brown Hall	1995	4,290,000	18,526,082	26,359	26,359	60,792
Carmichael/Hum Lecture H	1966	548,000	8,603,050	18,019	18,019	31,441
Carol Belk Theatre	1976	477,000	3,265,347	7,761	7,761	10,715
Highsmith Union	2004	15,800,000	22,526,780	53,936	53,936	73,920
Hyannis House	1977	109,154	256,161	1,828	1,828	2,151
Justice Center	1963	1,205,732	15,779,717	15,855	35,919	51,780
Karl Strauss Track Building	2015	1,532,887	1,025,042	1,712	1,712	2,014
Karpen Hall	1990	5,600,000	17,512,013	34,024	34,024	64,000
Lipinsky Hall	1964	791,758	11,797,609	21,516	21,516	38,173
Lookout Observatory	2013	575,530	420,244	969	969	1,379
Owen Hall	1979	1,809,259	12,960,531	28,879	28,879	47,366
Phillips Hall	1963	493,800	5,082,314	8,730	12,752	18,574
Ramsey Library	1965	685,637	18,925,850	35,608	35,608	47,641
Ramsey Library (New Wing)	1990	6,400,000	22,080,157	43,800	43,800	55,926
Reuter Center	2003	3,900,000	5,357,581	13,752	13,752	19,580
Rhoades/Robinson/Rhoades Tower	1961	7,692,636	42,922,354	65,408	65,408	105,358
River Arts Mkr Place	2016		2,000,000	8,521	8,521	11,575
Riverside Warehouse	1995	400,000	4,999,397	20,525	20,525	20,525
Sam Millar Facilities Complex	2007	5,559,215	6,737,069	21,134	21,134	27,659
Sherrill Center (includes garage)	2011	35,000,000	39,370,400			119,012
Soccer Fieldhouse	2003	289,415	413,540	1,153	1,153	1,357
Student Recreation Center	1997	6,075,600	16,151,506	44,423	44,501	53,000
Vance Hall	1967	94,000	1,155,246	2,164	2,164	4,222
Weizenblatt Hall	1972	191,000	1,990,897	3,742	2,498	7,274
West Ridge Parking Deck	1999	2,474,697	3,293,160	70,200	70,200	70,200
Whitesides Hall	2006	5,500,000	8,716,331	17,211	17,211	31,855
WT Weaver Bldg	1992	4,802,000	8,364,707	10,286	10,286	22,600
Zageir Hall	1975	1,130,000	8,491,958	18,365	18,365	31,035
Zageir Parking Deck	2001	842,600	1,353,189	28,000	28,000	28,000
Zeis Hall	2008	22,000,000	41,966,588	45,257	45,257	86,145
<i>Residential</i>						
25 Hyannis	1975	133,990	292,410	1,428	1,428	1,680
Ashe Hall	1969	132,670	1,925,034	0	4,619	6,900
Brumit Pisgah House (Chancellor's Residence)	2010	2,400,000	2,075,689	6,333	6,333	7,440
Founders Hall	1982	2,943,027	17,776,989	42,668	42,668	63,719
Gardner Hall	1967	146,000	1,841,337	168	4,006	6,600
Governors Hall	2003	11,500,000	16,613,878	36,098	36,098	59,550
Hoey Hall	1969	132,670	1,925,034	0	4,595	6,900
Merrimon Rhoades	1925	300,000	1,576,296	3,612	3,612	4,249
Mills Hall	1987	4,250,000	18,089,738	41,877	41,877	64,840
Moore Hall	1967	146,000	1,841,337	0	4,158	6,600
Overlook Hall	2012	20,028,926	27,726,345	50,509	50,509	99,381
Scott Hall	1967	146,000	1,841,337	792	4,090	6,600
South Ridge Hall	1994	3,950,000	11,168,544	22,354	22,354	40,032
West Ridge Hall	1999	7,600,000	13,786,869	28,711	28,711	49,417

Note: Contact Keith Krumpe in Administration & Finance for Building Inventory data beyond Fall 2017.

Table 49  
 Percentage of General Purpose Classrooms Utilized by Day and Time  
 Fall 2015\*

Time	Percent of Classrooms in Use				
	Mon	Tue	Wed	Thu	Fri
08:00-09:00	36.7	48.4	36.7	43.8	31.3
09:00-10:00	78.1	83.0	84.7	81.1	69.9
10:00-11:00	46.1	46.1	51.6	47.7	43.0
11:00-12:00	92.2	0.0	85.9	0.0	64.1
12:00-01:00	74.8	0.0	75.5	0.0	66.9
01:00-02:00	28.9	89.1	32.0	84.4	25.0
02:00-03:00	79.7	40.6	85.9	42.2	60.9
03:00-04:00	65.9	53.1	68.7	53.1	48.0
04:00-05:00	30.8	24.2	28.9	24.2	16.4
05:00-06:00	30.5	13.3	32.8	12.5	1.6
06:00-07:00	18.8	14.1	21.9	12.5	0.0
07:00-08:00	13.3	14.1	18.0	14.1	0.0
08:00-09:00	8.6	8.6	11.7	9.4	0.0
09:00-10:00	2.3	1.6	3.1	2.3	0.0

\* NOTE: Data published by UNC-GA, approximately 3 years behind.

Table 50

Classrooms and Labs by Building  
Fall 2017

	Classrooms				Class Labs				Open Labs			
	N	Capacity			N	Capacity			N	Capacity		
	Rms	Min	Mean	Max	Rms	Min	Mean	Max	Rms	Min	Mean	Max
Carmichael/Hum Lecture H	8	45	45.0	45					4	1	6.0	16
Carol Belk Theatre									2	24	24.5	25
Karpen Hall	19	0	26.7	78	2	18	32.5	47	2	20	20.0	20
Lipinsky Hall					2	30	52.5	75	17	1	6.6	16
Owen Hall	6	25	38.8	50	5	4	15.4	25	7	2	9.3	16
River Arts Mkr Place					1	1	1.0	1				
Ramsey Library (New Wing)									2	10	16.0	22
Rhoades/Robinson/Rhoades T	11	16	45.2	174	6	12	19.0	25	23	2	15.2	30
Sherrill Center (includes garage	5	38	43.8	53					7	2	13.4	37
West Ridge Hall									2	1	1.0	1
Whitesides Hall	8	23	28.5	43	2	20	34.5	49	1	20	20.0	20
Zageir Hall	10	19	25.8	36	1	25	25.0	25	1	26	26.0	26
Zeis Hall	3	34	37.7	40	6	12	20.0	24	17	4	14.0	24
Total	70	0	34.5	174	25	1	23.0	75	85	1	12.4	37

Note: Contact Keith Krumpe in Administration & Finance for data beyond Fall 2017.



Table 51

Residence Hall Capacity and Number of Students Housed

Residence Hall	2014			2015			2016			2017		
	Normal Capacity	Number Housed	Pct of Cap	Normal Capacity	Number Housed	Pct of Cap	Normal Capacity	Number Housed	Pct of Cap	Normal Capacity	Number Housed	Pct of Cap
Ashe Hall	20	20	100.0	20	20	100.0	20	20	100.0	20	20	100.0
Founders Hall	287	295	102.8	287	294	102.4	287	278	96.9	287	279	97.2
Gardner Hall	20	20	100.0	20	20	100.0	20	20	100.0	20	20	100.0
Governors Hall	166	179	107.8	161	175	108.7	161	170	105.6	161	169	105.0
Hoey Hall	20	20	100.0	20	20	100.0	20	19	95.0	20	20	100.0
Mills Hall	284	290	102.1	284	291	102.5	284	283	99.6	284	275	96.8
Moore Hall	20	20	100.0	20	20	100.0	20	19	95.0	20	19	95.0
Overlook Hall	288	302	104.9	288	305	105.9	288	287	99.7	288	284	98.6
Scott Hall	20	20	100.0	20	18	90.0	20	19	95.0	20	20	100.0
South Ridge Hall	107	116	108.4	107	118	110.3	107	112	104.7	107	107	100.0
West Ridge Hall	139	142	102.2	139	144	103.6	139	133	95.7	139	137	98.6
Total Students	1,371	1,424	103.9	1,366	1,425	104.3	1,366	1,360	99.6	1,366	1,350	98.8

Note: Contact Keith Krumpke in Administration & Finance for Residence Hall data beyond 2017.

Table 52  
Capital Improvements: 2017-18

		Est. Cost	Est. Completion Date Project Lgrh. (Constr. Period)
A.	Recently Completed Projects		
	1. STEAM at RAMP	1,310,000	August 2016
	2. Mills Hall Renovation	1,700,000	August 2017
	3. Philips Hall Parking Enhancements	425,000	February 2017
B.	Projects Under Construction		
	1. New Residence Hall	33,795,000	August 2018
	2. Renovation of Highsmith Union	12,430,000	August 2018
C.	Projects in Design - Funds Allocated		
	1 Owen Hall Renovation	15,100,000	August 2020
	2 Carmichael Renovation	6,000,000	August 2019
D.	Project in Planning - Awaiting Construction Funding		
	1. Renovation of Reed Plaza	971,181	November 2018
	2. Belk Theatre Catwalk and Lighting Renovation	550,000	December 2018
E.	Future Capital Projects - Currently Unfunded		
	1. Justice Center Renovation	24,039,958	
	2. Lipinsky Hall Renovation	21,309,560	

Note: Contact David Todd in Campus Operations for Capital Improvements data beyond 2017-18.

Table 53  
Ramsey Library Resources: Five-Year Trend

	2014	2015	2016	2017	2018
Books, Serial Files, Gov. Docs.	316,918	304,521	282,040	279,970	261,552
Current Serial Subscriptions	151,496	101,163	187	199	204
Microforms <sup>1</sup>	8,079	3,412	759	420	35
eBooks	468,793	499,940	539,250	670,018	715,876
eJournals <sup>2</sup>	151,271	101,050	48,748	76,919	63,342
Audiovisual Materials (dvds, audio cds, vhs)	7,520	7,796	7,924	7,879	8,020
Streaming Videos <sup>3</sup>	18,643	20,317	21,455	21,711	55,447

NOTES:

<sup>1</sup> Microforms total includes withdrawal of over 36,000 microforms during 2011 FY.

<sup>2</sup> eJournals drop in 2015, because switched from NCLive to ProQuest (total is from EBSCO A to Z)

<sup>3</sup> Added streaming videos during 2014 FY since they are more and more and dvd, cds are less.

SOURCE: Ramsey Library

# History and Governance

## History of UNC Asheville

- 1927 Founded as Buncombe County Junior College under the aegis of the Buncombe County public school system
- 1930 Merged with College of the City of Asheville; name changed to Biltmore Junior College
- 1936 Name changed to Asheville-Biltmore College and control passed to the Asheville City School Board
- 1957 Became first institution to qualify as a state-supported community college
- 1961 Institution moved to present location in North Asheville. First black student enrolled
- 1963 Asheville-Biltmore College became a state-supported senior college under a new board of trustees
- 1966 First baccalaureate degrees awarded
- 1969 Asheville-Biltmore College became the University of North Carolina at Asheville, one of six campuses of the Consolidated University
- 1972 The 10 remaining state-supported senior institutions were merged into a unified 16 member system, The University of North Carolina
- 1991 First master's degrees awarded in Liberal Arts
- 1992 Designated as a Liberal Arts I College by the UNC Board of Governors

### Chief Executive Officers

1927-1932	S.B. Conley, Dean
1932-1936	A.C. Reynolds, President
1936-1941	Charles A. Lloyd, Dean
1941-1945	J.J. Stevenson, Dean
1945-1946	William H. Morgan, Dean
1946-1947	Clarence N. Gilbert, Dean
1947	R.A. Tomberlin, President
1947-1962	Glenn L. Bushey, President
1962-1969	William E. Highsmith, President
1969-1977	William E. Highsmith, Chancellor
1977	Arnold K. King, Acting Chancellor
1977-1984	William E. Highsmith, Chancellor
1984-1990	David G. Brown, Chancellor
1990-1991	Roy Carroll, Interim Chancellor
1991-1993	Samuel Schuman, Chancellor
1994	Larry Wilson, Interim Chancellor
1994-1999	Patsy Reed, Chancellor
1999-2005	James H. Mullen, Jr., Chancellor
2005 -2014	Anne Ponder, Chancellor
2014	Doug Orr, Interim Chancellor
2015-2018	Mary Grant
2018-	Nancy Cable

Source: Chancellor's Office

# UNC ASHEVILLE MISSION STATEMENT

## VISION

UNC Asheville students, within a diverse and inclusive community, experience liberal arts education at its best.

## MISSION

UNC Asheville is distinctive in the UNC system as its designated liberal arts university. Our practice of the liberal arts emphasizes the centrality of learning and discovery through exemplary teaching, innovative scholarship, creative expression, co-curricular activities, undergraduate research, engaged service, and practical experience. UNC Asheville is primarily undergraduate, with all programs of study leading to the bachelor's degree, with the exceptions of teacher licensure programs and the master's degree in Liberal Arts and Sciences (MLAS). UNC Asheville offers a liberal arts education characterized by high quality faculty-student interaction. We offer this challenging educational experience to all promising students who are committed to liberal learning and personal growth.

Our liberal arts educational approach emphasizes life skills including critical thinking, clear and thoughtful expression, and honest open inquiry. Students undertake concentrated study in one area while simultaneously developing an understanding of the connections among disciplines. We encourage students to clarify, develop and live their own values while respecting the views and beliefs of others. In addition we cultivate an understanding of the dimensions of human diversity while recognizing the common humanity of all. We believe a quality liberal arts education enables our graduates to be lifelong learners and to lead successful, flourishing lives as leaders and contributors to their communities.

At UNC Asheville, we respond to the conditions and concerns of the contemporary world both as individuals and as a university. We incorporate economic, social and environmental sustainability into our institutional practices and curriculum. With a range of associated centers, partnerships, and initiatives, we fulfill our public responsibility to address the needs of our community through a continuum of learning. We develop a commitment to continuing service characterized by an informed, responsible, and creative engagement with the Asheville area, the southern Appalachian region, the state of North Carolina, and a diverse and increasingly connected world.

Approved by UNC Board of Governors - February 21, 2014

UNC Asheville Board of Trustees  
2018-19

<i>Member</i>	<i>Business</i>	<i>Home City</i>	<i>Term Expires</i>
Kennon Briggs <i>Chair</i>	Retired	Leland	2021 (Term 2)
Rick Lutovsky <i>Vice Chair</i>	Retired	Asheville	2019 (Term 1)
Wilma Sherrill <i>Secretary</i>	Retired	Asheville	2019 (Term 1)
King Prather	Retired	Cary	2019 (Term 2)
JW Davis	Bison Investments, Inc.	Asheville	2021 (Term 2)
Bob Long, Jr.	Long, Parker, Warren, Anderson & Payne	Asheville	2019 (Term 1)
Michael Davis	SGA President	Asheville	2018
Karen Keil Brown	Self-Employed Artist	Asheville	2021 (Term 1)
Robby Russell	PNC Bank	Asheville	2019 (Term 1)
Jim Peterson	Retired	Asheville	2021 (Term 1)
Cissie Stevens	Retired	Asheville	2021 (Term 1)
Oscar Wong	Highland Brewing Company	Asheville	2019 (Term 1)

Last update: 03/14/19  
Source: Chancellor's Office

UNC Asheville Foundation Board  
Fall 2018

<i>Member</i>	<i>Home City</i>
Michael E. Greene, Foundation Board Chair	Asheville, NC
Himanshu Karvir,	Asheville, NC
Derek J Allen, '93	Asheville, NC
Tiffany Armstrong, '99	Fairview, NC
Leslie McCullough Casse, '86	Asheville, NC
Donna Bailey	Arden, NC
Amy Bibby	Arden, NC
Courtney Blossman	Asheville, NC
Brion "Jack" Bolton, '96	Asheville, NC
Michael Davis, Student Government President	Asheville, NC
Maryann Jones	Fairview, NC
Vijay Kapoor	Asheville, NC
Sue McClinton	Asheville, NC
Lakesha McDay, '08	Candler, NC
George Morosani	Asheville, NC
Bill Newman	Biltmore Lake, NC
Thomas A. Oreck	Asheville, NC
William Smith	Asheville, NC
Jane Swafford	Hendersonville, NC
Kevin Westmoreland, '90	Asheville, NC
David Worley	Asheville, NC
Kirk Borland	Biltmore Lake, NC



UNCA Foundation Board  
(Continued)

<i>Member</i>	<i>Home City</i>
Holly Bunting, '00	Arlington, VA
Johnny Davis	Biltmore Lake, NC
Katie Rozycki, '07, Alumni Board Representative	Charlotte, NC
Susan Shanor	Asheville, NC
Peter Vexter	Arden, NC
Brandon Wallace, '99	Fletcher, NC

Ex-Officio:

Dr. Nancy Cable  
*Chancellor*

John Pierce  
*Interim Executive Director*  
*Treasurer*  
*Vice Chancellor for Finance & Campus Operations*

Judy Beck, Senior Lecturer  
*Physics*

Dr. Susan Clark Muntean, Assistant Professor  
*Management and Accountancy*

Dr. Gretchen Trautmann, Associate Professor  
*Modern Languages and Literatures*

UNC Asheville Alumni Association Board of Directors  
2018-19

Michael Roach (2002) .....	Wake Forest, NC
Benjamin Alexander (2010) .....	Candler, NC
Paul Beaton (2002) .....	Washington, DC
Kenya Edwards (2000) .....	Atlanta, GA
David Greene (1998) .....	Asheville, NC
Andrew Heath (2003) .....	Raleigh, NC
Glynis Holloway (1975) .....	Mint Hill, NC
Kristen Lawson (2014) .....	Boston, MA
Cortland Mercer (2011) .....	Asheville, NC
Rachel Prather (2010) .....	Wake Forest, NC
Lisa Riggsbee (2015) .....	Asheville, NC
Katherine Rozycki (2007) .....	Charlotte, NC
Edward Sheary (1975) .....	Weaverville, NC
Jeremy Shrader (2003) .....	Greensboro, NC
Charles Steele (1984) .....	Burlington, NC
Joshua Tan (1997) .....	Winston Salem, NC
Stephanie Watkins-Cruz (2015) .....	Carrboro, NC

Ex-Officios:

Elizabeth Underwood  
Senior Director of Alumni Engagement, University Advancement  
Asheville, NC

Jackson Myers  
President, Student Alumni Association, University Advancement  
Asheville, NC

# University of North Carolina at Asheville

## Organizational Chart

