

UNC Asheville



Office of
Institutional Research,
Effectiveness, and Planning

Fact
Book



UNIVERSITY *of* NORTH CAROLINA
ASHEVILLE

UNC Asheville Fact Book 2017-18

Institutional Research, Effectiveness & Planning
One University Heights
Asheville, NC 28804-8510
(828) 251-6619

C. Michael Gass, Senior Director of Institutional Research, Effectiveness, and Planning
Harold Thomas, Director of Institutional Research
Amanda Werts, Director of Institutional Effectiveness
Parker Beaman, Database Application Programmer
Peter Lewis, Senior Research Associate
Elaine Dye, Planning and Assessment Analyst

Table of Contents

I. Students and Alumni	Page	Table	Figure
<u>Admissions</u>			
Fall Applications, Acceptances and Enrollments by Sex	5	1	
Out-of-State Freshman Applications, Acceptances and Enrollments by State	6	2	
Distribution of New Freshman Enrollments by Region	8		1
New Freshman Admission Scores by Residence Status	9	3	
Fall Freshman SAT Scores and H.S. Rank Distributions	10		2
<u>Enrollments and Retention</u>			
Student Enrollment Demographic Profile (Res. + Ext. Credit Students)	11	4	
Student Enrollment Demographic Profile (Res. Credit Students Only)	12	5	
Student Enrollment Demographic Profile (Ext. Credit Students Only)	12	6	
Fall Enrolled Students by U.S. Region and State	13	7	
Enrolled Students by North Carolina Region and County	15	8	
Minority Presence: Fall Semesters	17	9	
Headcount by Race: Fall	17	10	
Distribution of Student Age by Class	18	11	
Parental Education Level of Undergraduate Degree-Seeking Students	18	12	
UNC System Undergraduate Student Demographic Comparisons	19	13	
Residence Halls and Number of Students Housed	19	14	
Commuter vs Residence Hall Students	20	15	
Summer School Headcount Enrollment by Class	20	16	
Summer School Headcount, FTE, and SCH Enrollment	21	17	
Distance Education Enrollment by Site	21	18	
Distance Education SCH by Funding Category	21	19	
New Fall Transfer Enrollments by Institution Type	22	20	
Source of New Undergraduate Transfer Students	23	21	
Retention of New Fall Entering Full-time Freshmen	24	22	
Retention of New Fall Entering Transfers	25	23	
Academic Program Inventory	26	24	
Enrollment by Major (Spring Semesters)	27	25	
Degrees Conferred by Academic Area and Major	28	26	
Average Undergraduate Class Size	29	27	

Programs	Page	Table	Figure
Grade Distribution by Course Level and Academic Year	30	28	
Weighted Average of All Grades Awarded by AY & Course Level	31		3
Intercollegiate Athletics	32	29	
Financial Aid			
Student Financial Aid by Source	33	30	
Students Receiving Financial Aid	34	31	
Intercollegiate Athletics Grants-In-Aid	35	32	
Alumni			
Current Residence of Alumni by US Region, State and Nation	36	33	
Alumni by North Carolina Region and County	38	34	
II. Faculty and Staff			
Employees by Employment Status, Job Class, Race and Sex	41	35	
Full-Time Instructional Faculty by Rank, Sex and Tenure Status	42	36	
Full-Time Instructional Faculty with Terminal Degrees by Rank and Department	43	37	
Full-Time Instructional Faculty Salaries by Rank	44	38	
III. Fiscal Resources			
Current Fund Revenues and Expenditures	46	39	
Operating Expenditures by Function	47	40	
Tuition and Fees Per Year	48	41	
Distance Education Tuition and Fees	48	42	
Tuition and Fees/Regular Full-Time Undergraduates (UNC Schools)	49	43	
External Grants and Contracts Funding Amounts by Fiscal Year	50	44	
Endowed Funds	51		4
Source of Outright Gift Income by Year	51	45	
Alumni Donations	52	46	
Outright Gift Income Summary	52	47	
Building Inventory	53	48	
Percentage of General Purpose Classrooms Utilized by Day and Time	54	49	
Classrooms and Labs by Building	55	50	
Residence Hall Capacity and Number of Students Housed	56	51	
Capital Improvements	57	52	
Ramsey Library Resources	58	53	
IV. UNCA History, Governance, and Organization			
History of UNC Asheville	60		
Chief Executive Officers	60		
UNC Asheville Mission Statement	61		
UNC Asheville Board of Trustees	62		
UNC Asheville Foundation Board	63		
UNC Asheville National Alumni Advisory Board	65		

Students and Alumni

Table 1
 Fall Applications, Acceptances, and Enrollments*
 New Degree-Seeking Students by Sex: Three-Year Trend

		2015			2016			2017		
		Female	Male	Total	Female	Male	Total	Female	Male	Total
First-Time Freshmen	Number of Applicants	2,048	1263	3,311	2,147	1290	3,437	2,147	1,211	3,358
	Number Accepted	1656	949	2,605	1753	924	2,677	1,800	930	2,730
	Accept/Apply Ratio	80.9	75.1	78.7	81.6	71.6	77.9	84.0	76.9	81.3
	Number Enrolled	451	284	735	416	250	666	394	254	648
	Enroll/Accept Ratio	27.2	29.9	28.2	23.9	27.3	24.9	22.0	27.5	23.7
New Transfers	Number of Applicants	311	268	579	326	251	577	312	243	555
	Number Accepted	277	224	501	297	206	503	300	219	519
	Accept/Apply Ratio	89.1	83.6	86.5	91.1	82.1	87.2	96.2	90.1	93.5
	Number Enrolled	169	149	318	178	125	303	196	159	355
	Enroll/Accept Ratio	61.0	66.5	63.5	60.1	60.7	60.2	65.3	72.6	68.4
New Graduate Students	Number of Applicants	4	8	12	7	9	16	3	5	8
	Number Accepted	4	7	11	6	9	15	3	5	8
	Accept/Apply Ratio	100.0	87.5	91.7	85.7	100.0	93.8	100.0	100.0	100.0
	Number Enrolled	2	3	5	3	8	11	3	1	4
	Enroll/Accept Ratio	50.0	42.9	45.5	50.0	88.9	73.3	100.0	20.0	50.0

Note: Incomplete applications are not included.

* Does not include extension students.

Table 2
Out of State Freshman Applications, Acceptances and Enrollments by State*

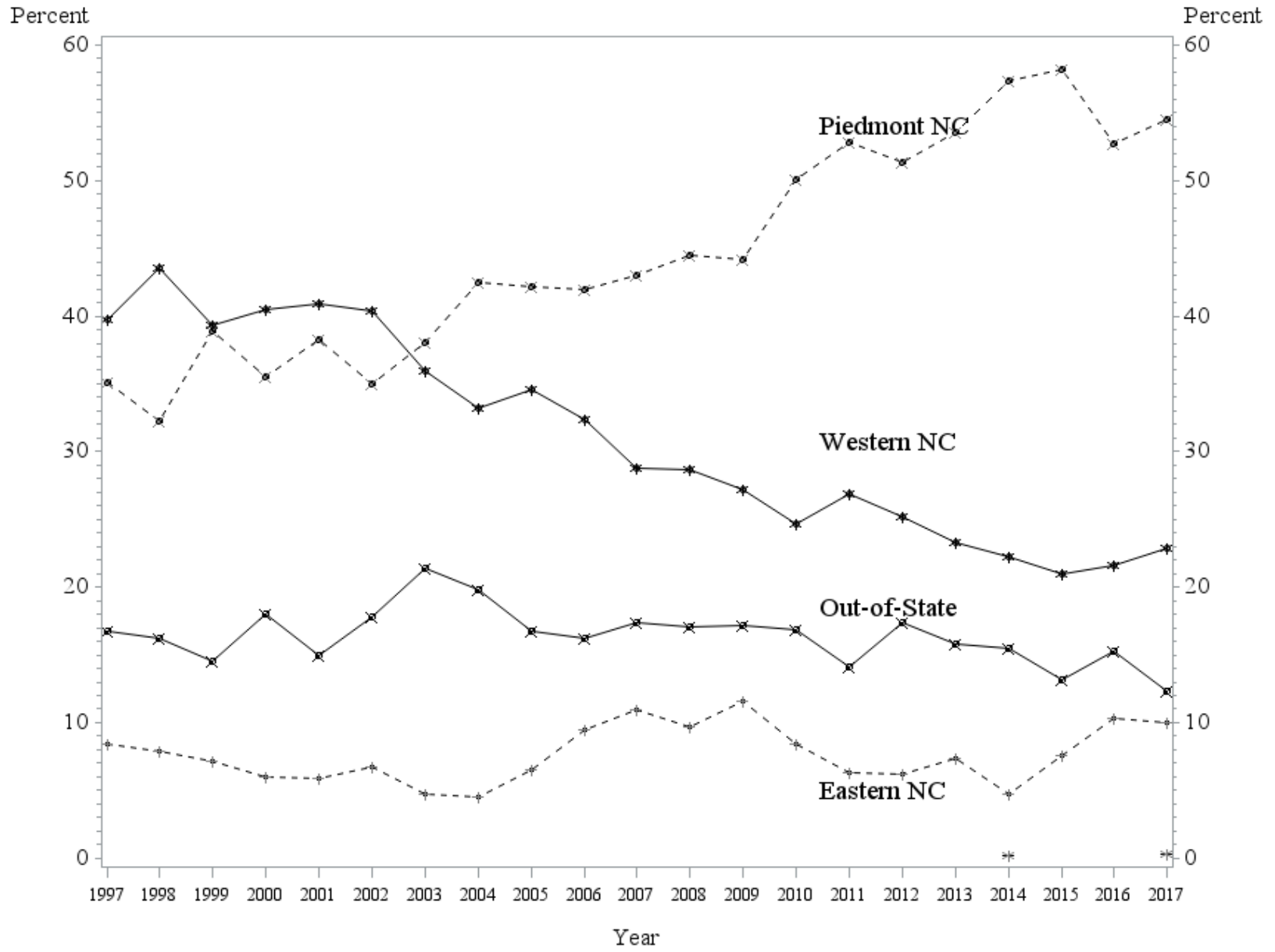
	2014			2015			2016		
	Applied	Accepted	Enrolled	Applied	Accepted	Enrolled	Applied	Accepted	Enrolled
American Abroad	1	1	1	3	0	0	5	2	0
Military	3	2	0	3	2	0	2	2	0
Alaska	2	1	1	1	1	0	2	2	0
Alabama	18	12	0	13	9	2	9	7	0
Arkansas	3	1	0				6	4	0
Arizona	5	1	0	3	2	0	6	4	0
California	51	22	5	34	15	1	33	16	2
Colorado	23	12	2	21	18	0	10	7	3
Connecticut	33	16	0	39	15	1	45	26	3
District of Columbia	32	9	0	21	6	2	35	19	0
Delaware	12	3	0	18	10	0	8	4	0
Florida	141	74	9	131	91	9	130	73	15
Georgia	123	74	14	144	91	19	129	87	9
Hawaii	3	1	0	1	0	0	1	0	0
Iowa	1	0	0	3	1	0	1	1	1
Idaho	3	0	0						
Illinois	32	13	3	49	28	6	54	31	3
Indiana	14	6	2	19	9	0	14	5	0
Kansas				4	3	0	5	4	0
Kentucky	18	7	1	20	10	3	19	14	3
Louisiana	10	3	0	10	7	0	11	7	0
Massachusetts	61	28	1	58	28	0	62	28	1
Maryland	110	65	8	87	58	6	103	64	7
Maine	14	6	2	4	2	0	7	3	0
Michigan	22	10	1	15	7	0	15	8	1
Minnesota	7	4	0	10	4	1	7	5	2
Missouri	7	4	1	8	5	0	7	4	0
Mississippi	6	3	0	2	1	0	5	1	0
Montana				1	1	0	3	1	0
North Dakota				1	1	0			
Nebraska	1	0	0	1	1	1	1	1	0
New Hampshire	15	9	0	20	10	1	8	4	1
New Jersey	80	34	2	65	38	3	60	34	5
New Mexico	7	5	0	6	1	0	1	1	0
Nevada	2	1	0	1	0	0	1	1	0
New York	99	36	3	96	48	5	94	50	4
Ohio	50	30	5	44	33	6	43	23	5
Oklahoma	5	1	0	1	0	0	5	3	0
Oregon	3	2	1	3	3	1	5	5	0
Pennsylvania	56	21	4	54	29	0	47	31	3
Puerto Rico	5	0	0	2	0	0	2	2	0
Rhode Island	18	7	1	7	4	0	9	4	0
South Carolina	70	44	4	70	37	6	75	47	7
South Dakota	1	1	0	2	1	0			
Tennessee	93	59	7	103	64	3	69	44	4
Texas	27	18	2	35	18	3	38	25	2
Utah	2	1	0	1	1	0	4	0	0
Virginia	81	43	6	74	47	5	104	62	13
Vermont	21	11	3	15	9	3	11	8	1

Table 2
Out of State Freshman Applications, Acceptances and Enrollments by State*

	2014			2015			2016		
	Applied	Accepted	Enrolled	Applied	Accepted	Enrolled	Applied	Accepted	Enrolled
Washington	6	2	0	4	3	0	7	5	0
Wisconsin	12	8	1	11	6	4	5	3	1
West Virginia	6	4	0	2	1	0	4	2	0
Wyoming				1	1	1	1	1	0
Unknown OutSt	33	19	3	22	9	1	21	5	0
International	124	47	6	106	33	4	113	35	6
Total	1,572	781	99	1,469	822	97	1,462	825	102

* Does not include extension students.

Figure 1: Distribution of New Freshman Enrollments by Region*
Fall Semesters



* Does not include extension students.

Table 3
New Freshman Admission Scores*
by Residence Status

Fall Semester	N	Combined SAT			Top 20% H.S. Class	H.S. GPA		H.S. GPA Weighted		
		Mean	25th %tile	75th %tile	Percent	% Submit	Mean	% Submit	Mean	
2008	In-State	486	1,157	1,060	1,240	45.9	92.6	3.40	94.9	3.94
	Out-of-State	100	1,163	1,070	1,250	50.0	52.0	3.44	77.0	3.71
	Year Total	586	1,158	1,060	1,240	46.3	85.7	3.40	91.8	3.91
2009	In-State	531	1,173	1,090	1,260	46.4	93.4	3.39	97.6	3.96
	Out-of-State	110	1,184	1,100	1,270	46.3	35.5	3.37	72.7	3.69
	Year Total	641	1,175	1,090	1,260	46.4	83.5	3.38	93.3	3.92
2010	In-State	495	1,170	1,080	1,260	44.5	90.7	3.38	94.3	3.96
	Out-of-State	100	1,162	1,090	1,240	32.0	41.0	3.48	70.0	3.70
	Year Total	595	1,168	1,080	1,260	43.1	82.4	3.39	90.3	3.92
2011	In-State	464	1,174	1,090	1,250	44.9	92.2	3.39	94.8	4.03
	Out-of-State	76	1,177	1,110	1,240	55.6	34.2	3.44	67.1	3.83
	Year Total	540	1,174	1,090	1,250	45.9	84.1	3.39	90.9	4.01
2012	In-State	457	1,183	1,100	1,250	50.0	93.4	3.45	97.4	4.08
	Out-of-State	96	1,191	1,080	1,260	49.0	46.9	3.54	71.9	4.02
	Year Total	553	1,184	1,100	1,250	49.9	85.4	3.46	93.0	4.07
2013	In-State	502	1,178	1,100	1,250	42.3	92.0	3.37	95.0	4.02
	Out-of-State	94	1,215	1,130	1,285	43.4	42.6	3.46	75.5	3.85
	Year Total	596	1,183	1,100	1,260	42.4	84.2	3.38	92.0	4.00
2014	In-State	534	1,180	1,110	1,250	44.0	91.6	3.41	94.8	4.08
	Out-of-State	99	1,189	1,100	1,270	51.2	46.5	3.53	75.8	3.88
	Year Total	633	1,182	1,110	1,250	44.6	84.5	3.42	91.8	4.06
2015	In-State	638	1,154	1,070	1,230	41.9	92.6	3.42	95.9	4.09
	Out-of-State	97	1,169	1,085	1,245	52.1	39.2	3.47	72.2	3.87
	Year Total	735	1,156	1,070	1,230	42.8	85.6	3.42	92.8	4.07
2016	In-State	564	1,149	1,050	1,220	44.9	92.9	3.48	96.6	4.14
	Out-of-State	102	1,141	1,040	1,210	42.9	43.1	3.47	72.6	3.75
	Year Total	666	1,147	1,050	1,220	44.7	85.3	3.48	92.9	4.10
2017	In-State	566	1,109	1,000	1,210	38.0	94.5	3.40	97.9	4.09
	Out-of-State	82	1,111	1,000	1,170	30.2	43.9	3.36	79.3	3.79
	Year Total	648	1,110	1,000	1,210	37.3	88.1	3.40	95.5	4.06

Notes:

- (1) Weighted HS GPA includes advanced courses that carry more than four quality points per credit hour.
- (2) In 2012, UNC-GA policy was changed to allow the reporting of the score used in the admissions decision for students with both SAT and ACT scores. Prior to 2012, all test scores were reported.

* Does not include extension students.

Figure 2: Fall 2017 Freshman SAT Scores and H.S. Rank Distributions

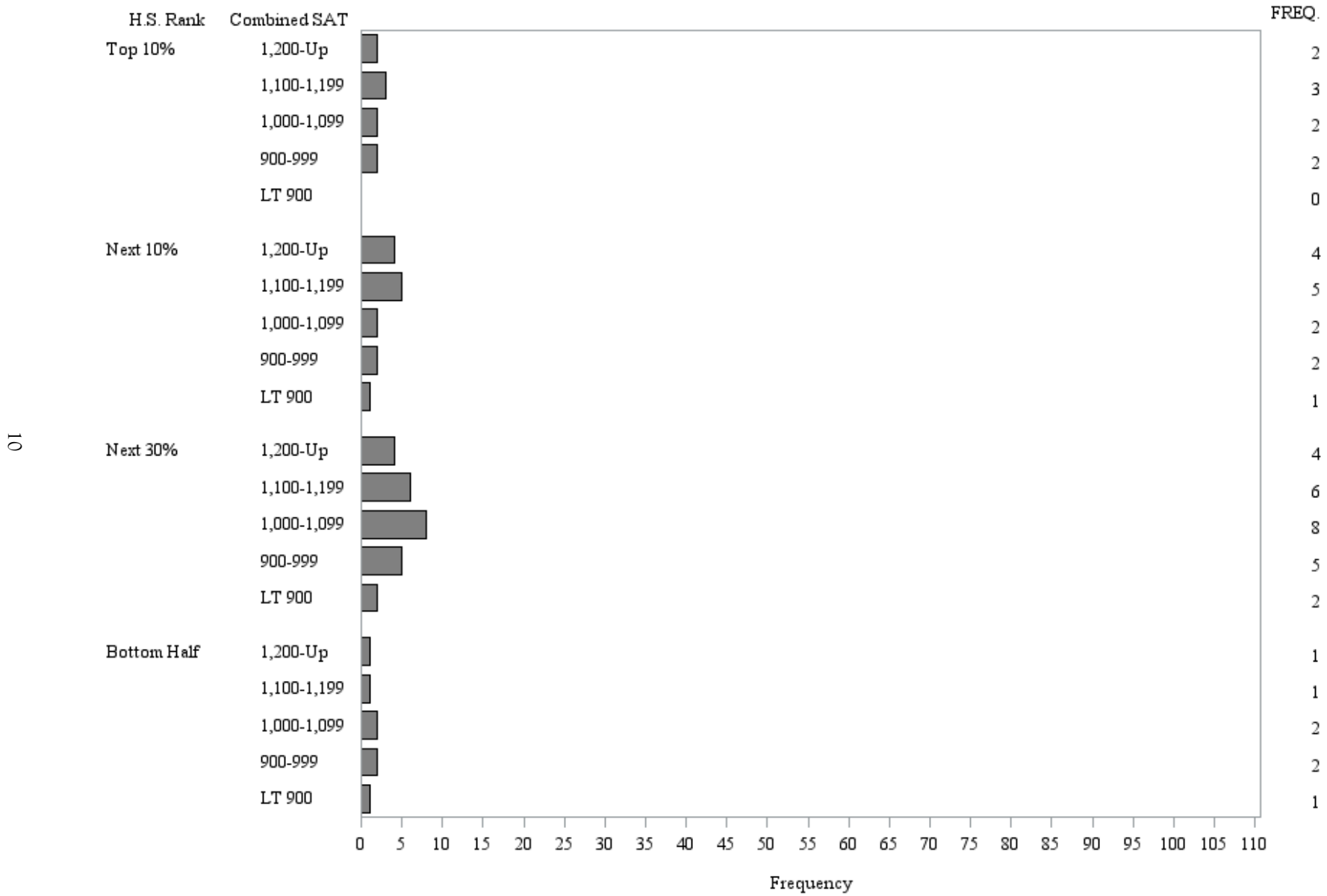


Table 4
Student Enrollment Demographic Profile
(Resident Credit + Extension Credit Students)
Fall 2017

	Undergraduate						Graduate			Grand Total
	Freshmen	Sophomores	Juniors	Seniors	Non-Degree	All	Masters Candidate	Special Graduate	All	
Full-Time	766	750	846	841	84	3,287	1		1	3,288
Part-Time	16	37	70	174	248	545	24	1	25	570
In State	669	701	816	916	289	3,391	24	1	25	3,416
Out of State	113	86	100	99	43	441	1		1	442
Male	317	328	389	479	143	1,656	13	1	14	1,670
Female	465	459	527	536	189	2,176	12		12	2,188
White	593	594	731	800	262	2,980	21	1	22	3,002
Black	49	44	37	38	6	174	2		2	176
Hispanic	52	55	59	61	11	238				238
Asian	16	23	16	19	3	77				77
Pacific Islander	2	1				3				3
Amer Indian	6	1	7	4	4	22				22
Multi Racial	36	33	35	48	8	160	1		1	161
Race Unknown	21	29	23	37	16	126	1		1	127
International	7	7	8	8	22	52				52
Res Hall	650	342	185	152	21	1,350				1,350
Headcount	782	787	916	1,015	332	3,832	25	1	26	3,858

Table 5
 Student Enrollment Demographic Profile
 (Resident Credit Students Only)
 Fall 2017

	Undergraduate						Graduate			Grand Total
	Freshmen	Sophomores	Juniors	Seniors	Non-Degree	All	Masters Candidate	Special Graduate	All	
Full-Time	766	750	846	841	84	3,287	1		1	3,288
Part-Time	16	37	70	174	109	406	24	1	25	431
In State	669	701	816	916	155	3,257	24	1	25	3,282
Out of State	113	86	100	99	38	436	1		1	437
Male	317	328	389	479	98	1,611	13	1	14	1,625
Female	465	459	527	536	95	2,082	12		12	2,094
White	593	594	731	800	151	2,869	21	1	22	2,891
Black	49	44	37	38	3	171	2		2	173
Hispanic	52	55	59	61	5	232				232
Asian	16	23	16	19		74				74
Pacific Islander	2	1				3				3
Amer Indian	6	1	7	4	1	19				19
Multi Racial	36	33	35	48	4	156	1		1	157
Race Unknown	21	29	23	37	8	118	1		1	119
International	7	7	8	8	21	51				51
Res Hall	650	342	185	152	21	1,350				1,350
Headcount	782	787	916	1,015	193	3,693	25	1	26	3,719

Table 6
 Student Enrollment Demographic Profile
 (Extension Credit Students Only)
 Fall 2017

	Undergraduate	
	Non-Degree	Grand Total
Part-Time	139	139
In State	134	134
Out of State	5	5
Male	45	45
Female	94	94
White	111	111
Black	3	3
Hispanic	6	6
Asian	3	3
Amer Indian	3	3
Multi Racial	4	4
Race Unknown	8	8
International	1	1
Headcount	139	139

Table 7
Fall Enrolled Students by U.S.Region and State*
(International Students by Country)

		2015		2016		2017	
		Enrolled	%	Enrolled	%	Enrolled	%
The South	Alabama	4	0.1	2	0.1	3	0.1
	Arkansas	0	0.0	0	0.0	2	0.1
	Florida	39	1.0	48	1.3	48	1.3
	Georgia	53	1.4	50	1.3	45	1.2
	Kentucky	11	0.3	10	0.3	9	0.2
	Louisiana	1	0.0	1	0.0	1	0.0
	Mississippi	2	0.1	1	0.0	1	0.0
	North Carolina	3,313	87.6	3,284	88.4	3,267	87.8
	South Carolina	28	0.7	28	0.8	26	0.7
	Tennessee	23	0.6	15	0.4	21	0.6
	Virginia	33	0.9	34	0.9	34	0.9
	West Virginia	3	0.1	1	0.0	2	0.1
		Region Total	3,510	92.8	3,474	93.5	3,459
Mid-Atlantic	Delaware	0	0.0	0	0.0	1	0.0
	District of Columbia	5	0.1	5	0.1	4	0.1
	Maryland	32	0.8	30	0.8	27	0.7
	New Jersey	19	0.5	20	0.5	17	0.5
	New York	22	0.6	19	0.5	14	0.4
		Pennsylvania	10	0.3	10	0.3	15
	Region Total	88	2.3	84	2.3	78	2.1
New England	Connecticut	10	0.3	6	0.2	8	0.2
	Maine	3	0.1	4	0.1	4	0.1
	Massachusetts	5	0.1	3	0.1	7	0.2
	New Hampshire	2	0.1	5	0.1	2	0.1
	Rhode Island	2	0.1	1	0.0	1	0.0
	Vermont	11	0.3	7	0.2	6	0.2
		Region Total	33	0.9	26	0.7	28
Midwest	Illinois	20	0.5	17	0.5	17	0.5
	Indiana	4	0.1	2	0.1	2	0.1
	Iowa	1	0.0	2	0.1	3	0.1
	Michigan	2	0.1	3	0.1	3	0.1
	Minnesota	1	0.0	4	0.1	7	0.2
	Missouri	3	0.1	1	0.0	1	0.0
	Nebraska	1	0.0	1	0.0	2	0.1
	Ohio	19	0.5	16	0.4	18	0.5
	Wisconsin	6	0.2	5	0.1	9	0.2
		Region Total	57	1.5	51	1.4	62
The Southwest	New Mexico	1	0.0	1	0.0	0	0.0
	Texas	7	0.2	5	0.1	7	0.2
		Region Total	8	0.2	6	0.2	7
The West	Alaska	0	0.0	0	0.0	1	0.0
	California	14	0.4	8	0.2	12	0.3
	Colorado	2	0.1	6	0.2	6	0.2
	Hawaii	1	0.0	1	0.0	1	0.0
	Idaho	0	0.0	0	0.0	1	0.0
	Montana	0	0.0	0	0.0	1	0.0
	Oregon	3	0.1	3	0.1	4	0.1
	Wyoming	1	0.0	1	0.0	2	0.1
		Region Total	21	0.6	19	0.5	28
Territories	Virgin Islands	1	0.0	1	0.0	0	0.0

Table 7
Fall Enrolled Students by U.S.Region and State*
(International Students by Country)

		2015		2016		2017	
		Enrolled	%	Enrolled	%	Enrolled	%
International	Region Total	1	0.0	1	0.0	0	0.0
	Albania	1	0.0	0	0.0	0	0.0
	Australia	3	0.1	2	0.1	1	0.0
	Austria	0	0.0	1	0.0	0	0.0
	Bhutan	0	0.0	0	0.0	1	0.0
	Bolivia	1	0.0	1	0.0	0	0.0
	Brazil	1	0.0	1	0.0	1	0.0
	Canada	0	0.0	0	0.0	1	0.0
	Cayman Islands	1	0.0	1	0.0	1	0.0
	China	1	0.0	3	0.1	0	0.0
	Denmark	1	0.0	1	0.0	1	0.0
	Ecuador	0	0.0	1	0.0	2	0.1
	Finland	0	0.0	0	0.0	1	0.0
	France	3	0.1	2	0.1	3	0.1
	Germany	1	0.0	0	0.0	1	0.0
	Hong Kong (migration)	2	0.1	0	0.0	1	0.0
	India	0	0.0	0	0.0	1	0.0
	Indonesia	1	0.0	1	0.0	1	0.0
	Ireland	0	0.0	0	0.0	1	0.0
	Israel	1	0.0	0	0.0	0	0.0
	Italy	1	0.0	1	0.0	0	0.0
	Japan	1	0.0	1	0.0	1	0.0
	Kenya	1	0.0	0	0.0	0	0.0
	Lithuania	0	0.0	0	0.0	1	0.0
	Mexico	2	0.1	4	0.1	4	0.1
	Netherlands	0	0.0	1	0.0	1	0.0
	New Zealand	0	0.0	1	0.0	0	0.0
	Nigeria	0	0.0	0	0.0	1	0.0
	Norway	0	0.0	2	0.1	0	0.0
	South Africa	2	0.1	1	0.0	1	0.0
	South Korea	1	0.0	8	0.2	1	0.0
Spain	1	0.0	1	0.0	0	0.0	
Sweden	0	0.0	0	0.0	1	0.0	
Switzerland	1	0.0	0	0.0	1	0.0	
United Kingdom	3	0.1	9	0.2	13	0.3	
United States of America	1	0.0	5	0.1	9	0.2	
Vietnam	1	0.0	0	0.0	0	0.0	
Total	Region Total	32	0.8	48	1.3	51	1.4

* Does not include extension students.

Table 8
Fall Enrolled Students by North Carolina Region and County*

		2015		2016		2017	
		Enrolled	%	Enrolled	%	Enrolled	%
Western NC	Alleghany	1	0.0	0	0.0	1	0.0
	Ashe	8	0.2	5	0.2	4	0.1
	Avery	6	0.2	2	0.1	0	0.0
	Buncombe	973	29.4	926	28.2	865	26.7
	Burke	50	1.5	31	0.9	27	0.8
	Caldwell	19	0.6	20	0.6	15	0.5
	Cherokee	13	0.4	10	0.3	12	0.4
	Clay	4	0.1	7	0.2	5	0.2
	Graham	0	0.0	1	0.0	4	0.1
	Haywood	49	1.5	61	1.9	53	1.6
	Henderson	198	6.0	182	5.5	169	5.2
	Jackson	7	0.2	7	0.2	7	0.2
	Macon	8	0.2	9	0.3	10	0.3
	Madison	34	1.0	34	1.0	30	0.9
	McDowell	40	1.2	55	1.7	46	1.4
	Mitchell	9	0.3	5	0.2	3	0.1
	Polk	21	0.6	23	0.7	30	0.9
	Rutherford	31	0.9	22	0.7	21	0.6
	Surry	14	0.4	17	0.5	22	0.7
	Swain	15	0.5	15	0.5	15	0.5
	Transylvania	32	1.0	33	1.0	24	0.7
	Watauga	19	0.6	18	0.5	18	0.6
	Wilkes	7	0.2	3	0.1	3	0.1
Yancey	17	0.5	22	0.7	16	0.5	
Region Total		1,575	47.5	1,508	46.0	1,400	43.2
Piedmont NC	Alamance	25	0.8	23	0.7	27	0.8
	Alexander	4	0.1	4	0.1	7	0.2
	Anson	0	0.0	1	0.0	0	0.0
	Cabarrus	32	1.0	37	1.1	47	1.5
	Catawba	44	1.3	55	1.7	54	1.7
	Chatham	31	0.9	36	1.1	36	1.1
	Cleveland	18	0.5	18	0.5	17	0.5
	Davidson	7	0.2	10	0.3	11	0.3
	Davie	19	0.6	20	0.6	15	0.5
	Durham	89	2.7	84	2.6	84	2.6
	Forsyth	137	4.1	121	3.7	120	3.7
	Franklin	9	0.3	9	0.3	7	0.2
	Gaston	51	1.5	58	1.8	57	1.8
	Granville	3	0.1	4	0.1	5	0.2
	Guilford	122	3.7	121	3.7	121	3.7
	Iredell	56	1.7	47	1.4	51	1.6
	Lee	5	0.2	5	0.2	6	0.2
	Lincoln	27	0.8	26	0.8	25	0.8
	Mecklenburg	258	7.8	245	7.5	250	7.7
	Montgomery	0	0.0	0	0.0	1	0.0
	Moore	22	0.7	16	0.5	23	0.7
	Orange	137	4.1	128	3.9	113	3.5
	Person	4	0.1	2	0.1	5	0.2
Randolph	8	0.2	9	0.3	17	0.5	
Richmond	0	0.0	2	0.1	3	0.1	
Rockingham	9	0.3	11	0.3	10	0.3	

Table 8
Fall Enrolled Students by North Carolina Region and County*

		2015		2016		2017	
		Enrolled	%	Enrolled	%	Enrolled	%
	Rowan	18	0.5	27	0.8	32	1.0
Eastern NC	Stanly	5	0.2	7	0.2	9	0.3
	Stokes	13	0.4	10	0.3	12	0.4
	Union	66	2.0	85	2.6	89	2.7
	Vance	0	0.0	1	0.0	2	0.1
	Wake	311	9.4	311	9.5	320	9.9
	Warren	1	0.0	0	0.0	0	0.0
	Yadkin	4	0.1	8	0.2	9	0.3
	Region Total	1,535	46.3	1,541	47.0	1,585	48.9
	Beaufort	1	0.0	2	0.1	4	0.1
	Bertie	2	0.1	2	0.1	2	0.1
	Bladen	0	0.0	1	0.0	2	0.1
	Brunswick	5	0.2	8	0.2	6	0.2
	Camden	1	0.0	2	0.1	4	0.1
	Carteret	12	0.4	11	0.3	11	0.3
	Chowan	2	0.1	3	0.1	2	0.1
	Columbus	0	0.0	2	0.1	0	0.0
	Craven	11	0.3	19	0.6	19	0.6
	Cumberland	19	0.6	14	0.4	19	0.6
	Currituck	4	0.1	5	0.2	5	0.2
	Dare	14	0.4	17	0.5	17	0.5
	Duplin	3	0.1	1	0.0	1	0.0
	Edgecombe	2	0.1	2	0.1	1	0.0
	Gates	0	0.0	1	0.0	1	0.0
	Halifax	0	0.0	1	0.0	5	0.2
	Harnett	8	0.2	6	0.2	8	0.2
	Hoke	0	0.0	0	0.0	2	0.1
	Hyde	1	0.0	0	0.0	0	0.0
	Johnston	14	0.4	15	0.5	14	0.4
	Lenoir	0	0.0	1	0.0	1	0.0
	Martin	2	0.1	3	0.1	2	0.1
	Nash	3	0.1	1	0.0	4	0.1
	New Hanover	48	1.4	52	1.6	56	1.7
	Northampton	0	0.0	0	0.0	3	0.1
	Onslow	8	0.2	17	0.5	24	0.7
	Pasquotank	4	0.1	1	0.0	2	0.1
	Pender	12	0.4	9	0.3	6	0.2
	Perquimans	0	0.0	1	0.0	1	0.0
	Pitt	10	0.3	15	0.5	13	0.4
	Robeson	1	0.0	2	0.1	4	0.1
	Sampson	4	0.1	5	0.2	3	0.1
	Scotland	2	0.1	1	0.0	0	0.0
	Wayne	4	0.1	3	0.1	4	0.1
	Wilson	6	0.2	9	0.3	9	0.3
	Region Total	203	6.1	232	7.1	255	7.9
Total		3,313	100.0	3,281	100.0	3,241	100.0

* Does not include extension students.

Table 9
 Minority Presence: Fall Semesters*

Fall Semester	Total Headcount	International Students	Percent	
			Minority Total	Minority
1989	3,293	25	167	5.1
1990	3,310	23	190	5.7
1991	3,261	23	163	5.0
1992	3,277	20	191	5.8
1993	3,165	30	201	6.4
1994	3,195	38	205	6.4
1995	3,222	38	229	7.1
1996	3,092	41	218	7.1
1997	3,179	42	210	6.6
1998	3,175	43	214	6.7
1999	3,164	38	207	6.5
2000	3,234	44	216	6.7
2001	3,247	41	229	7.1
2002	3,294	31	221	6.7
2003	3,348	42	241	7.2
2004	3,488	47	262	7.5
2005	3,398	41	247	7.3
2006	3,497	39	248	7.1
2007	3,527	45	284	8.1
2008	3,460	44	296	8.6
2009	3,695	42	319	8.6
2010	3,765	42	345	9.2
2011	3,665	51	356	9.7
2012	3,587	41	379	10.6
2013	3,628	32	427	11.8
2014	3,704	41	482	13.0
2015	3,782	60	553	14.6
2016	3,715	48	623	16.8
2017	3,719	51	658	17.7

Note: International students are not included in the calculation of the minority total nor the percent.

Table 10
 Headcount by Race/Ethnicity: Fall 2017*

Unduplicated Race/Ethnicity Category	Total N	Race Categories (students can check more than one)					
		American Indian	Asian	Black	Pacific Islander	White	Unreported
American Indian	19	19	0	0	0	0	0
Asian	74	0	74	0	0	0	0
Black	173	0	0	173	0	0	0
Hispanic	232	14	5	13	3	148	66
Pacific Islander	3	0	0	0	3	0	0
White	2,891	0	0	0	0	2,891	0
Multiracial	157	67	52	61	10	146	0
Nonresident Alien	51	0	7	1	0	31	12
Unreported	119	0	0	0	0	0	119
Total	3,719	100	138	248	16	3,216	197

* Does not include extension students.

Table 11
Distribution of Student Age by Class*
Fall 2017

	N	Age Group Percent				Age			
		LT 25	25-29	30-39	40-Up	Median	Mean	Min	Max
New Freshmen	648	100.0	0.0	0.0	0.0	18.0	18.0	16	24
Other Freshmen	185	94.6	4.3	0.5	0.5	19.0	19.9	17	41
Sophomores	765	93.3	3.8	1.8	1.0	19.0	20.4	18	55
Juniors	888	83.9	9.5	5.4	1.2	21.0	22.2	18	55
Seniors	1,014	75.1	13.9	8.7	2.3	22.0	23.9	16	65
Non-Degree	193	29.0	24.9	22.8	23.3	28.0	31.8	16	75
Masters Candidates	25	8.0	20.0	20.0	52.0	42.0	43.7	22	74
Special Graduate	1	0.0	0.0	0.0	100.0	49.0	49.0	49	49
Total	3,719	83.4	8.5	5.4	2.7	20.0	22.1	16	75

* Does not include extension students.

Table 12
Undergraduate Degree-Seeking Students
With at Least One Parent Having 4-Yr. College Degree*
Fall 2017

Class	N	Parent Education Data Reported		Mother	Father	Both	Either
		N	Percent	4-Yr Deg	4-Yr Deg	4-Yr Deg	4-Yr Deg
				Percent	Percent	Percent	Percent
Freshmen	782	766	98.0	56.5	52.9	39.6	69.8
Sophomore	787	757	96.2	58.8	51.3	40.0	70.0
Junior	916	868	94.8	54.4	52.2	38.8	67.7
Senior	1,015	950	93.6	55.1	50.3	38.3	67.1
Total	3,500	3,341	95.5	56.1	51.6	39.1	68.5

* Does not include extension students

Table 13
UNC System Undergraduate Student Demographic Comparisons
Fall 2014

Institution	Percent Full-Time	Mean Age	Pct Home & Contig. Co.	Percent Out-of-State
Appalachian State	89.7	21	9.7	9.0
East Carolina	77.6	22	19.4	11.7
Elizabeth City State	87.7	24	32.0	9.0
Fayetteville State	72.3	27	65.1	4.2
NC A & T	86.9	22	32.3	19.6
NC Central	81.0	23	48.3	8.9
NC State	79.3	21	35.9	13.1
UNC Asheville	82.9	24	38.5	11.0
UNC Chapel Hill	83.3	20	12.5	19.3
UNC Charlotte	78.1	23	50.0	8.3
UNC Greensboro	75.7	23	44.9	7.4
UNC Pembroke	74.0	25	58.3	3.8
UNC School of the Arts	98.9	21	15.2	50.9
UNC Wilmington	84.4	22	18.8	14.4
Western Carolina	77.4	23	14.1	8.7
Winston-Salem	83.7	26	35.5	8.0
UNC Total	80.7	22	30.9	11.6

Source: *Statistical Abstract of Higher Education in North Carolina, last published 2014*

Table 14
Residence Halls and Number of Students Housed: Fall 2017*

Residence Hall	Men	Women	Total
Ashe Hall	8	12	20
Founders Hall	99	180	279
Gardner Hall	8	12	20
Governors Hall	54	115	169
Hoey Hall	16	4	20
Mills Hall	115	160	275
Moore Hall	8	11	19
Overlook Hall	134	150	284
Scott Hall	16	4	20
South Ridge Hall	35	72	107
West Ridge Hall	58	79	137
Total On Campus	551	799	1,350

* Does not include extension students.

Table 15
Commuter vs Residence Hall Students*
(Undergraduate Degree-Seeking Students)

Fall Semester	Total Enrollment	Commuter	Res Hall	Percent Res Hall
2001	2,888	1,871	1017	35.2
2002	2,974	1,991	983	33.1
2003	3,093	1,957	1136	36.7
2004	3,246	1,969	1277	39.3
2005	3,141	2,079	1062	33.8
2006	3,239	2,180	1059	32.7
2007	3,278	2,165	1113	34.0
2008	3,173	2,047	1126	35.5
2009	3,344	2,175	1169	35.0
2010	3,438	2,299	1139	33.1
2011	3,356	2,247	1109	33.0
2012	3,288	2,025	1263	38.4
2013	3,347	1,996	1351	40.4
2014	3,446	2,022	1424	41.3
2015	3,545	2,120	1425	40.2
2016	3,494	2,134	1360	38.9
2017	3,521	2,171	1350	38.3

* Does not include extension students.

Table 16
Summer School Headcount Enrollment by Class: 10-Year Trend*

	2008	2009	2010	2011	2012	2013	2014	2015	2016	2017
Freshman	51	31	49	28	30	43	38	11	20	17
Sophomore	81	89	86	96	89	67	104	80	116	76
Junior	200	162	242	224	201	171	173	184	210	183
Senior	320	359	370	437	391	372	345	371	309	338
Non-degree	39	40	16	31	30	27	38	23	18	28
Post-Bacc Certif	4	8	3	3	6	2	6	2	2	0
Post-Bacc Non-degree	6	11	14	15	19	17	14	23	12	10
Masters Candidate	2	6	3	5	1	1	2	1	3	3
Special Graduate	1	5	0	0	0	0	1	0	1	1
Teacher Certificate	15	23	25	20	3	8	6	5	2	5
Distance Learning	0	1	0	0	0	0	1	1	0	1
Visitor	70	88	63	83	68	68	75	76	58	61
Total	789	823	871	942	838	776	803	777	751	723

* Does not include extension students.

Table 17
Summer School Headcount, FTE, and SCH Enrollment: 10-Year Trend*

Year	Head- count	FTE	SCH
2008	789	255	3,921
2009	823	265	4,256
2010	871	306	4,545
2011	942	330	4,868
2012	838	309	4,403
2013	776	309	4,322
2014	803	299	4,225
2015	777	300	4,381
2016	751	282	4,112
2017	723	269	3,861

* Does not include extension students.

Table 18
Distance Education Headcount by Gender, Race, Class, and Age Group: Fall 2017

	Headcount
Female	94
Male	45
Asian	3
Black	3
American Indian	3
Multi-racial	4
Non-Resident Alien	1
Hispanic	6
Not Reported	8
White	111
Distance Learning	138
World Lang Consortium	1
Age LT 25	12
Age 25-29	13
Age 30-39	26
Age 40-Up	88
Total	139

Table 19: Distance Education SCH by Funding Category

		2015-16	2016-17	2017-18
Category 1	Actual	440	611	473
	Fundable	440	611	473
Category 2	Actual	942	989	900
	Fundable	942	989	900
Category 3	Actual	123	160	209
	Fundable	123	160	209
Total	Actual	1,505	1,760	1,582
	Fundable	1,505	1,760	1,582

Notes: Fundable SCH does not include SCH generated through contractual relationships with other institutions. (e.g. Morganton Correctional Center). Data are as of End of Term.

Table 20
New Fall Transfer Enrollments by Institution Type*

			2013		2014		2015		2016		2017	
			N	%	N	%	N	%	N	%	N	%
North Carolina	Public	Senior Institutions	46	12.2	43	11.7	33	10.4	38	12.5	34	9.6
		Community Colleges	224	59.3	218	59.4	189	59.4	183	60.4	220	62.0
		Other	-	-	-	-	1	0.3	-	-	1	0.3
	Private	Senior Institutions	15	4.0	23	6.3	18	5.7	25	8.3	21	5.9
		Junior Institutions	4	1.1	1	0.3	-	-	1	0.3	-	-
		Other	-	-	1	0.3	1	0.3	3	1.0	2	0.6
	Total		289	76.5	286	77.9	242	76.1	250	82.5	278	78.3
Out-of-State	Public	Senior Institutions	26	6.9	35	9.5	23	7.2	16	5.3	13	3.7
		Junior Institutions	35	9.3	19	5.2	32	10.1	15	5.0	36	10.1
		Other	-	-	3	0.8	1	0.3	-	-	-	-
	Private	Senior Institutions	24	6.3	21	5.7	17	5.3	17	5.6	21	5.9
		Junior Institutions	3	0.8	-	-	-	-	-	-	1	0.3
		Other	-	-	1	0.3	1	0.3	-	-	-	-
	Other	Foreign Institutions	1	0.3	-	-	1	0.3	1	0.3	3	0.8
		Unclassified	-	-	2	0.5	1	0.3	4	1.3	3	0.8
	Total		89	23.5	81	22.1	76	23.9	53	17.5	77	21.7
Grand Total All Institutions			378	100.0	367	100.0	318	100.0	303	100.0	355	100.0

* Does not include extension students.

Table 21
Source of New Undergraduate Transfer Students*
Fall 2017

Institution	Apply	Accept	Enroll
Asheville - Buncombe Technical Community College	144	128	109
Wake Technical Community College	40	23	14
Blue Ridge Community College	22	18	13
Central Piedmont Community College	34	21	13
Cape Fear Community College	19	12	8
University of North Carolina at Charlotte	14	12	8
Warren Wilson College	13	11	8
Catawba Valley Community College	11	8	6
Forsyth Technical Community College	11	6	6
Guilford Technical Community College	9	8	6
Western Carolina University	7	6	6
Rowan-Cabarrus Community College	7	6	5
University of North Carolina at Wilmington	6	5	5
Brevard College	7	5	4
Coastal Carolina Community College	5	4	4
Haywood Community College	8	4	4
North Carolina State University	6	5	4
Western Piedmont Community College	9	6	4
Alamance Community College	4	3	3
Appalachian State University	9	5	3
Brookdale Community College, NJ	3	3	3
Durham Technical Community College	8	6	3
Elon College	3	3	3
Mars Hill College	6	3	3
Sandhills Community College	5	4	3
University of North Carolina at Chapel Hill	4	4	3
Other	154	126	104
			355

* Does not include extension students.

Table 22
Retention & Graduation Rates
of New Fall Entering *Full-time* Freshmen*
2007 - 2016 Cohorts

	Cohort		Years After Entry					
	Year	N	1	2	3	4	5	6
Retention Rate	2007	570	77.0	67.4	63.0	25.3	5.3	1.4
	2008	586	81.9	72.9	67.4	28.2	4.3	1.9
	2009	638	81.5	69.0	63.5	26.5	5.0	1.6
	2010	589	80.6	68.3	64.2	24.8	4.2	1.4
	2011	537	78.4	69.3	63.7	21.0	3.4	1.3
	2012	549	80.7	69.8	64.7	18.9	3.8	
	2013	593	77.2	65.9	60.2	22.3		
	2014	627	78.9	70.0	63.8			
	2015	734	78.2	68.8				
	2016	663	74.7					
Graduation Rate	2007	570	0.0	0.0	0.7	37.0	55.8	59.6
	2008	586	0.0	0.0	0.7	38.4	60.8	64.2
	2009	638	0.0	0.2	0.8	36.1	56.1	60.0
	2010	589	0.0	0.5	1.4	39.2	59.6	62.1
	2011	537	0.0	0.0	2.0	42.3	59.6	61.6
	2012	549	0.0	0.4	1.8	45.9	61.4	
	2013	593	0.0	0.3	2.2	38.6		
	2014	627	0.0	0.8	2.4			
	2015	734	0.0	0.7				
	2016	663	0.0					
Persistence Rate**	2007	570	77.0	67.4	63.7	62.3	61.1	61.1
	2008	586	81.9	72.9	68.1	66.6	65.0	66.0
	2009	638	81.5	69.1	64.3	62.5	61.1	61.6
	2010	589	80.6	68.8	65.5	64.0	63.8	63.5
	2011	537	78.4	69.3	65.7	63.3	62.9	62.9
	2012	549	80.7	70.1	66.5	64.8	65.2	
	2013	593	77.2	66.3	62.4	60.9		
	2014	627	78.9	70.8	66.2			
	2015	734	78.2	69.5				
	2016	663	74.7					

* Does not include extension students.

** Persistence rate is the percentage of students that are enrolled or graduated.

Table 23
Retention & Graduation Rates
of New Fall Entering Transfers*
2007 - 2016

	Cohort		Years After Entry					
	Year	N	1	2	3	4	5	6
Retention Rate	2007	287	76.3	63.1	27.5	9.1	4.5	2.1
	2008	296	76.4	54.7	23.0	5.4	2.4	0.7
	2009	316	79.1	56.0	20.6	4.1	0.6	0.3
	2010	358	82.1	61.2	26.0	10.1	3.6	1.4
	2011	328	75.0	56.7	21.0	7.3	2.4	0.9
	2012	321	76.9	56.1	21.8	5.6	2.5	
	2013	378	78.3	57.7	20.6	3.7		
	2014	366	75.7	52.5	21.0			
	2015	318	77.4	55.0				
	2016	300	76.0					
Graduation Rate	2007	287	0.0	8.0	40.8	58.9	63.8	65.5
	2008	296	0.0	12.5	43.6	59.8	62.5	64.2
	2009	316	0.0	11.7	44.0	59.5	62.0	62.7
	2010	358	0.0	8.4	43.0	58.9	65.4	67.0
	2011	328	0.0	8.8	43.6	55.8	60.7	62.8
	2012	321	0.0	11.2	43.6	58.9	61.7	
	2013	378	0.5	14.0	46.8	65.6		
	2014	366	0.0	16.4	47.5			
	2015	318	0.0	16.4				
	2016	300	0.0					
Persistence Rate*	2007	287	76.3	71.1	68.3	67.9	68.3	67.6
	2008	296	76.4	67.2	66.6	65.2	64.9	64.9
	2009	316	79.1	67.7	64.6	63.6	62.7	63.0
	2010	358	82.1	69.6	69.0	69.0	69.0	68.4
	2011	328	75.0	65.5	64.6	63.1	63.1	63.7
	2012	321	76.9	67.3	65.4	64.5	64.2	
	2013	378	78.8	71.7	67.5	69.3		
	2014	366	75.7	68.9	68.6			
	2015	318	77.4	71.4				
	2016	300	76.0					

* Does not include extension students.

*Persistence rate is the percentage of students that are enrolled or graduated.

Table 24

Academic Program Inventory: Fall 2017

Discipline Division, CIP Code, Discipline Specialty, Degree Abbreviation, and Degree Program Title

Natural Resources and Conservation

- 3.0103 *Environmental Studies*
BS Environmental Studies
- 3.0103 *Climate Change and Society Certificate Program*
PB Climate Change and Society
PB Environmental and Cultural Sustainability

Women's Studies

- 5.0207 *Women's Studies*
BA Women, Gender and Sexuality Studies

Communication, Journalism, and Related Programs

- 9.0102 *Mass Communication/Media Studies*
BA Journalism and Mass Communication

Computer & Information Sciences & Support Services

- 11.0701 *Computer Science*
BS Computer Science

Engineering

- 14.0101 *Engineering, General*
BS Engineering (Joint w/UNCA & NCSU)

Foreign Languages, Literatures and Linguistics

- 16.0501 *German Language and Literature*
BA German
BA German with Teacher Licensure
- 16.0901 *French Language and Literature*
BA French
BA French with Teacher Licensure
- 16.0905 *Spanish Language and Literature*
BA Spanish
BA Spanish with Teacher Licensure
- 16.12 *Classics & Classical Languages, Literatures & Linguistics, Gen*
BA Classics
BA Classics with Teacher Licensure in Latin

English Language and Literatures/Letters

- 23.0101 *English Language and Literature, General*
BA English
BA English with Teacher Licensure

Liberal Arts & Sciences, General Studies & Humanities

- 24.0101 *Liberal Arts and Sciences/Liberal Studies*
BA Interdisciplinary Studies
MLAS Liberal Arts

Biological and Biomedical Sciences

- 26.0101 *Biology/Biological Sciences, General*
BS Biology
BS Biology with Teacher Licensure

Mathematics and Statistics

- 27.0101 *Mathematics, General*
BA Mathematics
BA Mathematics with Teacher Licensure

Philosophy and Religious Studies

- 38.0101 *Philosophy*
BA Philosophy
- 38.0201 *Religious Studies*
BA Religious Studies

Physical Sciences

- 40.0401 *Atmospheric Sciences and Meteorology, General*
BS Atmospheric Science
- 40.0501 *Chemistry, General*
BA Chemistry
BA Chemistry with Teacher Licensure
BS Chemistry
BS Chemistry with Teacher Licensure
- 40.0801 *Physics, General*
BS Physics
BS Physics with Teacher Licensure

Psychology

- 42.0101 *Psychology, General*
BA Psychology

Social Sciences

- 45.0201 *Anthropology*
BA Anthropology
BA Anthropology with Teacher Licensure in Social Studies
- 45.0601 *Economics, General*
BA Economics
BA Economics with Teacher Licensure in Social Studies
- 45.1001 *Political Science and Government, General*
BA Political Science
BA Political Science w/ Teacher Licensure in Social Studies
- 45.1101 *Sociology*
BA Sociology
BA Sociology with Teacher Licensure in Social Studies

Visual and Performing Arts

- 50.0102 *Digital Arts*
BA New Media
- 50.0501 *Drama and Dramatics/Theater Arts, General*
BA Drama
BA Drama with Teacher Licensure
- 50.0701 *Art/Art Studies, General*
BA Art
BA Art with Teacher Licensure
- 50.0702 *Fine/Studio Arts, General*
BFA Art
- 50.0703 *Art History, Criticism and Conservation*
BA Art History
- 50.0901 *Music, General*
BA Music
- 50.0910 *Jazz Studies*
BFA Jazz and Contemporary Music
- 50.0913 *Music Technology*
BS Music Technology

Health Professions & Related Sciences

- 51.2207 *Public Health Education and Promotion*
BS Health and Wellness Promotion
BS Health and Wellness Promotion with Teacher Licensure

Business, Mgmt., Marketing & Related Support Services

- 52.0201 *Business Administration and Management, General*
BS Management
- 52.0301 *Accounting*
BS Accounting

History

- 54.0101 *History, General*
BA History
BA History with Teacher Licensure in Social Studies

Table 25
Enrollment by Major
Degree Seeking Undergraduates - Spring Semesters*

Major	2013	2014	2015	2016	2017	5-Year % Change
Accounting	58	50	58	48	48	-17.2
Anthropology	27	23	31	19	22	-18.5
Art	120	92	97	90	88	-26.7
Art History	9	17	16	12	16	77.8
Atmospheric Sciences	31	26	32	30	32	3.2
Biology	135	133	145	133	141	4.4
Chemistry	54	53	58	44	66	22.2
Classics	20	23	13	13	11	-45.0
Computer Science	62	70	73	66	77	24.2
Drama	40	35	31	17	23	-42.5
Economics	47	47	59	49	47	0.0
Education	88	70	65	39	70	-20.5
English	149	129	126	104	98	-34.2
Environmental Studies	176	180	170	138	150	-14.8
French	35	27	30	25	16	-54.3
German	12	6	12	11	8	-33.3
Health & Wellness Promotion	135	139	141	134	122	-9.6
History	85	77	78	53	63	-25.9
Industrial Engineering Mgmt	1	1				
Interdisciplinary Studies	136	103	74	58	43	-68.4
Jazz and Contemporary Music		5	12	9	7	
Management	140	123	109	121	148	5.7
Mass Communication	87	87	114	94	100	14.9
Mathematics	97	91	90	75	64	-34
Mechatronics	57	59	82	85	110	93.0
Music	35	17	6	2	8	-77.1
Music Technology	40	38	39	35	40	0.0
New Media	78	70	81	86	104	33.3
Philosophy	30	25	19	14	14	-53.3
Physics	21	21	21	18	18	-14.3
Political Science	80	83	70	60	54	-32.5
Psychology	257	232	199	149	135	-47.5
Religious Studies	33	27	16	12	11	-66.7
Sociology	73	71	69	55	73	0.0
Spanish	53	46	48	31	23	-56.6
Women, Gender & Sexuality Studies	14	16	16	10	16	14.3

NOTE: Degree-seeking students *formally* admitted to the teacher licensure program are double counted in "Education" and their primary major. Students with double majors are counted in each major.

* Does not include extension students

Table 26
Degrees Conferred by Academic Area and Major

Academic Area	Major	2012-13		2013-14		2014-15		2015-16		2016-17	
		N	%	N	%	N	%	N	%	N	%
Social Sciences	Accounting	12	1.6	19	2.5	22	2.9	19	2.5	17	2.2
	Anthropology	11	1.5	12	1.6	9	1.2	12	1.6	9	1.2
	Economics	10	1.4	24	3.2	15	2.0	18	2.3	23	3.0
	Health and Wellness Promotion	40	5.5	45	5.9	46	6.1	46	6.0	53	7.0
	Industrial Engineering Mgmt					1	0.1				
	Management	30	4.1	57	7.5	48	6.4	44	5.7	56	7.4
	Mass Communication	36	4.9	32	4.2	34	4.5	46	6.0	46	6.1
	Political Science	21	2.9	27	3.6	26	3.4	25	3.3	26	3.4
	Psychology	91	12.5	108	14.2	99	13.1	93	12.1	87	11.5
	Sociology	26	3.6	26	3.4	25	3.3	24	3.1	29	3.8
	Area Total		277	37.9	350	46.1	325	43.0	327	42.6	346
Natural Sciences	Atmospheric Science	17	2.3	9	1.2	8	1.1	9	1.2	10	1.3
	Biology	36	4.9	32	4.2	49	6.5	44	5.7	43	5.7
	Chemistry	8	1.1	11	1.4	17	2.3	23	3.0	25	3.3
	Computer Science	22	3.0	14	1.8	13	1.7	26	3.4	26	3.4
	Engineering	7	1.0	12	1.6	15	2.0	27	3.5	28	3.7
	Environmental Studies	44	6.0	64	8.4	59	7.8	57	7.4	59	7.8
	Mathematics	33	4.5	25	3.3	30	4.0	30	3.9	27	3.6
	New Media	34	4.7	18	2.4	27	3.6	28	3.7	47	6.2
	Physics	8	1.1	4	0.5	9	1.2	7	0.9	3	0.4
	Area Total		209	28.6	189	24.9	227	30.1	251	32.7	268
Humanities	Art	46	6.3	46	6.1	34	4.5	34	4.4	36	4.7
	Art History			8	1.1	6	0.8	4	0.5	8	1.1
	Classics	4	0.5	7	0.9	7	0.9	4	0.5	3	0.4
	Drama	7	1.0	16	2.1	14	1.9	9	1.2	3	0.4
	English	54	7.4	46	6.1	43	5.7	48	6.3	43	5.7
	French	9	1.2	7	0.9	9	1.2	7	0.9	6	0.8
	German	4	0.5	5	0.7	2	0.3	4	0.5	3	0.4
	History	38	5.2	28	3.7	25	3.3	31	4.0	20	2.6
	Jazz and Contemporary Music					3	0.4	2	0.3	6	0.8
	Music	12	1.6	10	1.3	7	0.9			1	0.1
	Music Technology	13	1.8	10	1.3	14	1.9	11	1.4	17	2.2
	Philosophy	4	0.5	13	1.7	6	0.8	7	0.9	3	0.4
	Religious Studies	13	1.8	13	1.7	9	1.2	4	0.5	5	0.7
	Spanish	17	2.3	15	2.0	15	2.0	16	2.1	15	2.0
Area Total		221	30.3	224	29.5	194	25.7	181	23.6	169	22.3
Interdiscip.	Interdisciplinary Studies	48	6.6	52	6.8	40	5.3	36	4.7	16	2.1
	Women, Gender, Sexuality	4	0.5	5	0.7	7	0.9	3	0.4	3	0.4
	Area Total		52	7.1	57	7.5	47	6.2	39	5.1	19
Graduate	Liberal Arts (MLA)	13	1.8	10	1.3	9	1.2	19	2.5	6	0.8
	University Total		730	100.0	760	100.0	755	100.0	767	100.0	759

Table 27
Undergraduate Class Size: Fall 2017*

Dept/Program	Lecture/Seminar				Lab/Studio				Internship/Field Exp				Individual Study/Research			
	N	Section Size			N	Section Size			N	Section Size			N	Section Size		
	Sections	Mean	Min	Max	Sections	Mean	Min	Max	Sections	Mean	Min	Max	Sections	Mean	Min	Max
Africana Studies	3	18.3	15	21												
Art & Art History	6	20.2	20	21	29	11.7	5	17	1	8.0	8	8	2	1.0	1	1
Arts 310	14	18.4	14	22												
Atmospheric Sci	11	11.5	2	19									4	1.5	1	3
Biology	24	23.4	12	50	17	16.0	4	18					4	2.3	1	4
Chemistry	20	27.9	10	46	18	22.3	15	33								
Classics	11	14.5	6	21	1	18.0	18	18					2	1.0	1	1
Computer Science	22	18.7	11	37	4	19.3	17	23					3	3.0	1	6
Dance	4	13.5	4	27	5	14.8	4	27					3	1.0	1	1
Drama	14	10.0	1	25	7	12.7	2	21								
Economics	21	21.8	7	27												
Education	24	13.8	2	29	3	25.3	25	26					1	1.0	1	1
Engineering	13	37.6	6	82	13	17.6	8	27								
Envr Studies	37	23.6	5	59	3	19.7	19	20	1	12.0	12	12	6	1.2	1	2
Health & Wellness	30	21.3	7	32					2	5.0	1	9	8	1.9	1	4
History	18	17.5	4	23					1	2.0	2	2	3	1.3	1	2
Honors Program	1	8.0	8	8									2	1.0	1	1
Humanities	55	22.1	13	24												
Interdisciplinary Studies	36	15.9	3	23					1	7.0	7	7	10	1.7	1	6
Literature	47	16.9	3	26					2	1.0	1	1	4	3.0	1	8
Mass Comm	18	22.2	9	40									5	1.0	1	1
Mathematics	41	26.4	11	35									3	1.3	1	2
Mgt & Accountancy	41	19.5	9	26					1	7.0	7	7	6	1.0	1	1
Modern Lang & Lit	36	15.4	4	24									3	1.3	1	2
Music	10	20.6	6	42	31	10.4	3	33	2	1.0	1	1	2	1.0	1	1
New Media	32	20.3	16	24	2	17.0	16	18	2	6.5	1	12	6	1.5	1	3
Philosophy	10	15.7	9	19									1	1.0	1	1
Physics	23	28.9	11	52	8	21.0	11	26					6	1.5	1	2
Political Science	11	20.9	11	26					1	9.0	9	9	5	1.4	1	3
Psychology	31	25.5	12	44									9	1.1	1	2
Religious Studies	9	15.7	6	22												
Soc & Anth	23	23.1	11	30									3	1.7	1	3
Wm,Gen,& Sexuality	4	19.0	16	25					1	1.0	1	1	1	1.0	1	1
UNCA Total	700	20.6	1	82	141	15.3	2	33	15	4.9	1	12	102	1.5	1	8

Note: does not include SABR, Student Teaching, Recitals-Ensembles, or Physical Activity Sections

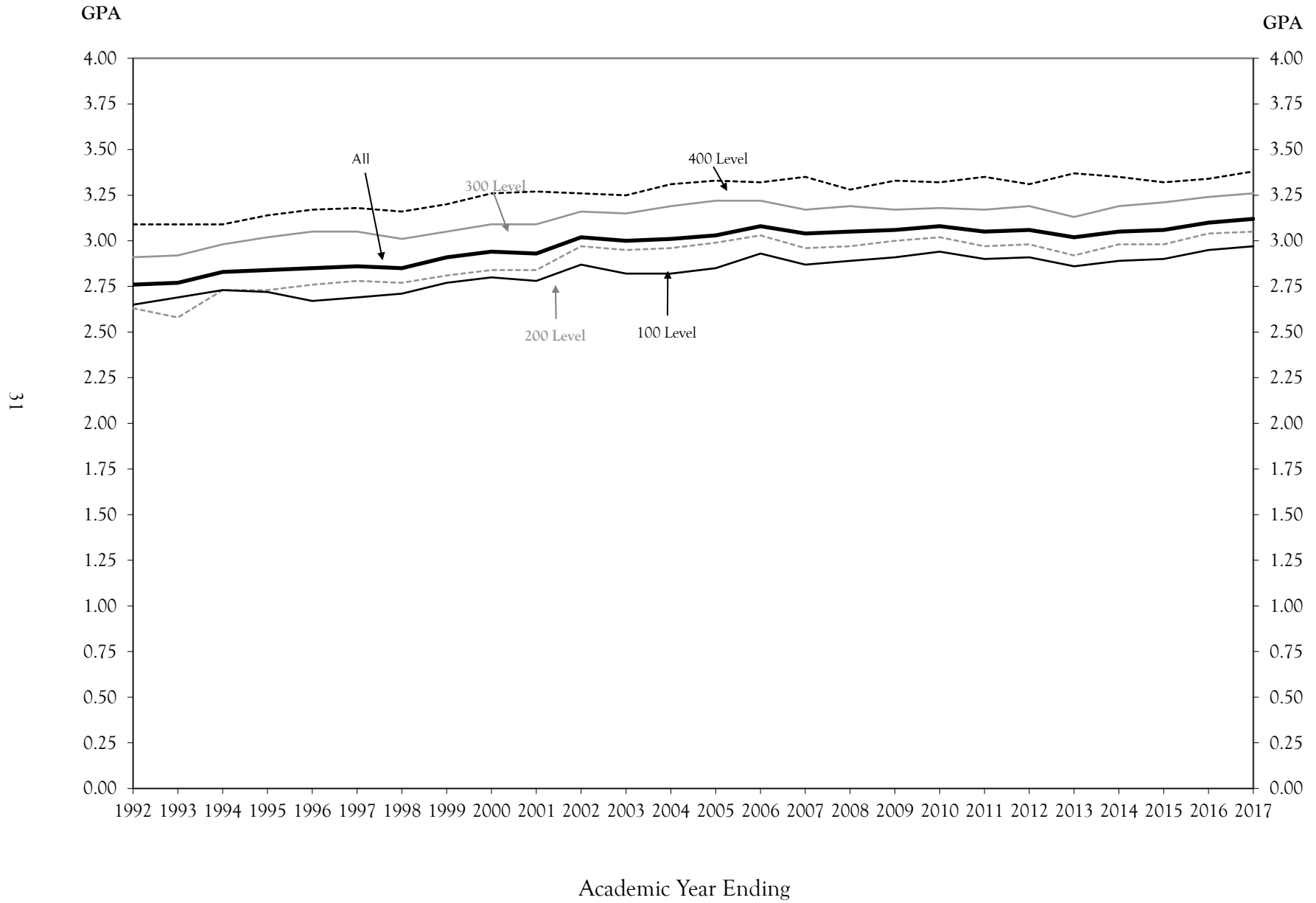
* Does not include extension students.

Table 28
Grade Distribution by Course Level and Academic Year*

Level	Acad Year Ending	N Grades	Weighted GPA	Grade										
				A %	A- %	B+ %	B %	B- %	C+ %	C %	C- %	D+ %	D %	F %
100	2008	10,053	2.89	27.8	11.5	9.4	18.0	6.4	4.8	9.1	2.9	1.0	3.7	5.4
	2009	10,569	2.91	28.3	11.3	9.3	18.2	6.7	4.4	9.5	2.8	1.0	3.7	4.9
	2010	11,269	2.94	28.0	11.7	9.9	18.2	6.2	4.5	9.7	3.2	0.8	3.5	4.4
	2011	11,044	2.90	28.7	11.3	8.9	17.6	6.7	4.5	9.1	3.1	0.8	4.2	5.0
	2012	10,101	2.91	25.7	12.5	10.1	17.8	7.2	4.8	9.3	3.4	1.0	3.6	4.5
	2013	10,138	2.86	26.7	12.5	10.3	16.4	6.5	5.0	8.2	3.3	1.2	3.7	6.3
	2014	10,789	2.89	28.4	11.4	9.8	16.0	7.4	4.8	8.6	3.0	1.3	3.9	5.4
	2015	10,114	2.90	26.9	12.5	9.9	16.4	7.0	5.1	8.6	3.2	1.1	3.9	5.6
	2016	10,742	2.95	28.1	13.3	10.2	15.7	7.2	4.6	8.3	2.8	1.2	3.9	4.6
2017	10,826	2.97	29.6	13.1	10.3	15.1	7.1	4.6	7.3	3.1	1.0	3.5	5.3	
200	2008	4,917	2.97	27.2	12.2	10.2	18.0	7.1	4.6	9.6	2.5	0.9	3.0	4.7
	2009	5,003	3.00	28.7	12.6	10.5	17.6	6.8	4.8	7.6	2.6	1.1	3.4	4.2
	2010	5,404	3.02	27.2	14.2	10.3	16.8	8.0	5.1	8.8	2.6	0.7	2.6	3.6
	2011	5,850	2.97	29.2	12.9	10.0	15.8	7.6	4.9	7.4	3.1	0.9	3.3	5.0
	2012	5,990	2.98	25.5	14.5	11.1	16.6	7.8	4.7	8.4	3.1	1.1	3.5	3.7
	2013	5,829	2.92	25.8	13.4	10.0	17.3	7.7	5.0	8.7	2.4	1.1	3.5	5.2
	2014	5,924	2.98	25.5	13.5	11.5	17.2	7.7	5.3	8.4	3.2	0.8	3.0	4.1
	2015	6,256	2.98	25.0	14.6	11.5	16.1	7.8	5.5	8.3	3.0	1.2	2.7	4.3
	2016	6,521	3.04	27.5	14.8	11.6	15.6	7.2	5.4	6.9	2.7	1.0	3.0	4.2
2017	6,415	3.05	26.1	16.2	11.4	15.5	7.5	6.0	6.6	3.3	1.1	2.7	3.4	
300	2008	9,220	3.19	33.2	15.0	11.1	17.9	6.1	3.4	6.1	2.0	0.4	1.5	3.3
	2009	8,936	3.17	32.4	14.9	11.5	18.3	6.6	3.2	5.7	2.1	0.3	1.7	3.3
	2010	9,550	3.18	33.2	15.5	10.9	17.4	6.3	3.4	6.0	1.6	0.5	1.7	3.4
	2011	9,377	3.17	32.5	15.8	11.3	17.1	6.7	3.6	5.3	2.2	0.4	1.7	3.5
	2012	8,873	3.19	31.7	16.0	12.0	16.0	7.0	4.0	6.0	1.7	0.7	1.8	3.1
	2013	8,819	3.13	32.7	14.8	11.0	16.5	6.3	3.2	6.0	2.2	0.7	2.1	4.6
	2014	8,549	3.19	33.2	15.8	11.5	16.6	5.5	4.0	5.8	1.8	0.6	1.7	3.5
	2015	8,348	3.21	33.0	15.6	12.0	16.2	7.1	3.7	5.7	2.0	0.5	1.6	2.5
	2016	7,890	3.24	34.9	15.5	12.4	15.3	7.0	3.7	4.5	1.9	0.7	1.5	2.6
2017	7,683	3.26	36.2	15.6	11.3	15.0	6.8	3.5	5.3	2.1	0.6	1.4	2.2	
400	2008	3,032	3.28	40.3	11.9	9.6	17.9	5.2	3.2	6.4	1.3	0.5	1.0	2.6
	2009	2,939	3.33	41.5	14.3	9.9	15.8	4.9	2.8	6.0	1.5	0.2	1.0	2.1
	2010	3,167	3.32	43.6	13.8	9.0	15.1	4.8	2.6	5.3	1.5	0.2	1.5	2.7
	2011	3,331	3.35	43.4	13.7	9.4	14.7	6.0	2.4	5.2	1.2	0.3	1.4	2.3
	2012	3,167	3.31	41.5	14.1	9.9	14.7	5.5	2.9	5.1	1.7	0.4	1.6	2.7
	2013	3,276	3.37	45.4	12.9	10.0	14.6	4.9	1.9	5.0	1.2	0.4	1.2	2.5
	2014	3,330	3.35	45.3	14.2	9.5	12.6	5.6	2.8	4.8	1.5	0.5	1.1	2.2
	2015	3,100	3.32	42.7	13.6	10.0	15.2	5.4	2.6	4.6	1.5	0.5	1.4	2.5
	2016	3,201	3.34	42.8	15.2	10.2	13.2	5.6	2.8	4.5	1.9	0.3	1.4	1.9
2017	3,154	3.38	43.8	15.8	9.6	14.1	4.7	2.9	4.0	1.7	0.6	1.0	1.8	
500+	2008	75	3.55	61.3	9.3	9.3	12.0	1.3	1.3		1.3			4.0
	2009	80	3.70	57.5	20.0	10.0	10.0	1.3						1.3
	2010	99	3.67	61.6	17.2	4.0	7.1	5.1	3.0	1.0				1.0
	2011	138	3.68	63.0	10.9	10.9	8.7	3.6		2.2		0.7		
	2012	123	3.67	51.2	24.4	14.6	6.5	0.8	0.8					1.6
	2013	131	3.71	61.8	14.5	12.2	4.6	3.1	1.5	1.5				0.8
	2014	100	3.78	63.0	20.0	7.0	8.0	1.0	1.0					
	2015	93	3.62	54.8	23.7	6.5	4.3	3.2	2.2	4.3				1.1
	2016	89	3.79	69.7	12.4	10.1	5.6	2.2						
2017	73	3.63	58.9	13.7	12.3	6.8	1.4	1.4	4.1				1.4	
All	2008	27,297	3.05	31.0	12.8	10.1	18.0	6.3	4.1	7.9	2.3	0.7	2.5	4.2
	2009	27,527	3.06	31.2	13.0	10.3	17.9	6.5	3.9	7.5	2.4	0.7	2.7	3.9
	2010	29,489	3.07	31.3	13.6	10.2	17.3	6.4	4.1	7.9	2.4	0.6	2.5	3.7
	2011	29,740	3.05	31.8	13.3	9.9	16.7	6.8	4.1	7.1	2.6	0.6	2.9	4.2
	2012	28,254	3.06	29.4	14.3	10.9	16.6	7.1	4.3	7.5	2.6	0.8	2.8	3.7
	2013	28,193	3.02	30.7	13.5	10.4	16.3	6.5	4.1	7.2	2.5	0.9	2.8	5.1
	2014	28,692	3.05	31.3	13.5	10.6	16.0	6.7	4.4	7.2	2.5	0.9	2.7	4.2
	2015	27,911	3.06	30.1	14.0	10.9	16.1	7.0	4.5	7.2	2.6	0.9	2.6	4.0
	2016	28,443	3.10	31.6	14.5	11.1	15.3	7.0	4.3	6.5	2.5	0.9	2.7	3.6
2017	28,151	3.12	32.3	14.8	10.7	15.1	6.8	4.4	6.2	2.7	0.9	2.4	3.6	

* Does not include extension students.

Figure 3
 Weighted Average of All Grades Awarded by Academic Year and Course Level*



* Does not include extension students

Table 29
Intercollegiate Athletics: 2017*

Teams	Men	Women	Last Champ.	Last Record		
				W	L	T
Baseball	29		2006	25	32	
Basketball Men	14		2018	21	12	
Basketball Women		14	2017	15	14	
Soccer Men	26		2001	2	15	1
Soccer Women		21	2006	6	10	2
Tennis Men	8		1986	8	12	1
Tennis Women		10	1989	11	10	0
Volleyball		13	2009	13	15	
Swimming Women		24		3	5	
Outdoor Track Men	18				7th in Big South	
Outdoor Track Women		16			8th in Big South	
Indoor Track Men	19				7th in Big South	
Indoor Track Women		16			8th in Big South	
Cross Country Men	14				4th in Big South	
Cross Country Women		9	1999		4th in Big South	
Golf Women		7			7th in Big South	

* Does not include extension students

Athletic Facilities

Athletic Facilities	Seats
Kimmel Arena (Basketball)	3,200
Justice Center (Volleyball)	1,100
Greenwood Field (Soccer)	1,000
Greenwood Field (Baseball)	1,000

Big South Conference Members

1. UNC Asheville
2. Charleston Southern University
3. Winthrop University
4. Radford University
5. Liberty University
6. High Point University
7. Presbyterian College
8. Gardner-Webb
9. Campbell
10. Longwood
11. Hampton University*
12. USC Upstate*

National Collegiate Athletic Association Info.

NCAA Division I
Big South Conference
Nickname: Bulldogs
Colors: Royal Blue and White

*Will join Big South in 2018-19

Table 30
Student Financial Aid by Source
Three-Year Trend

	2014-15		2015-16		2016-17	
	Awards	Amount	Awards	Amount	Awards	Amount
Federal Funds						
DC Tuition Assistance Grant (TAG)	0	0	0	0	4	34099
FDLP - PLUS	160	1,907,954	165	1,814,569	190	2,101,185
FDLP - Unsubsidized Stafford	1,560	5,942,180	1,630	6,157,142	1,630	6,173,343
Federal Ford Direct Loan Program (FDLP) - Subsidized	1,595	6,284,402	1,523	5,921,688	1,535	5,987,629
Federal Pell Grant	1,438	5,644,147	1,414	5,666,352	1,364	5,408,552
Federal Perkins Loan	74	184,041	40	118,697	43	131,018
Federal Supplemental Educational Opportunity Grant	146	55,087	166	74,931	171	71,542
Federal Teach	7	23,161	3	9,280	3	9,320
Federal Work Study (FWS)	46	94,630	48	97,086	60	111,141
Sub-total	5,026	20,135,601	4,989	19,859,745	5,000	20,027,828
State Funds						
Appropriated Grant (Non-Service Scholarship)	510	224,000	505	223,314	500	223,405
Education Lottery Scholarship	275	349,108	282	365,091	337	441,226
NC REACH	2	10,800	1	4,800	2	21,213
NC Teaching Fellows Program (Forgivable loan)	13	84,500	0	0	0	0
North Carolina TAP	2	6,735	2	7,673	2	8,440
Other North Carolina Scholarship or Grant	4	14,400	3	12,000	3	7,700
Prospective Teacher Scholarship Loan (Forgivable loan)	1	4,000	0	0	0	0
UNC Campus Scholarship Program	9	17,957	10	17,957	11	17,957
UNC Need Based Grant	1,077	2,386,107	1,122	2,482,487	986	2,153,803
Sub-total	1,893	3,097,607	1,925	3,113,322	1,841	2,873,744
Other Funds						
Athletic Grant-in-Aid	181	1,762,696	210	1,995,275	216	2,241,673
Externally Administered Private Grant/Scholarship (Non-Need Based)	0	0	0	0	16	37,845
Forgiveable Education Loans for Service	4	20,000	3	21,000	4	28,750
Golden Leaf	5	15,000	10	28,500	12	34,500
Institutional Grant/Scholarship (Need Based)	177	323,674	200	420,495	212	431,664
Institutional Grant/Scholarship (Non-Need Based)	438	880,461	475	990,561	493	958,731
Need Based Campus Initiated Tuition Increase Grants	1,509	2,754,867	1,600	2,890,250	1,140	2,991,374
Other Institutional Scholarship or Grant	38	52,646	47	100,951	68	174,203
Other state aid, Non-NC based	2	2,650	3	2,100	3	4,600
Penn Family Scholarship	2	2,250	3	3,000	4	3,750
Sub-total	2,356	5,814,244	2,551	6,452,131	2,168	6,907,089
Total	9,275	29,047,451	9,465	29,425,198	9,009	29,808,662

* Not all dollars under Other Funds are awarded by the Office of Financial Aid.

Table 31
Students Receiving Financial Aid*

Fall	N	Financial Aid			Percent of Students Receiving				Average Award	Avg Pct of Need Met	
		Apps	Offers	Awards	Loans	Grants	Scholarships	Aid Total			
2014	New Freshmen	633	529	454	453	51.7	54.0	16.6	71.6	9,991	73.9
	New Transfers	367	294	275	275	58.6	61.9	8.4	74.9	11,534	69.3
	New Non-Degree	127	40	36	35	26.8	1.6	0.0	27.6	8,787	62.2
	New Graduates	11	2	2	2	18.2	0.0	0.0	18.2	19,735	83.2
	Returning	93	49	47	47	45.2	34.4	1.1	50.5	9,450	68.0
	Continuing	2,473	1,803	1,740	1,737	48.6	52.2	18.6	70.2	10,750	69.0
	Total	3,704	2,717	2,554	2,549	49.2	51.2	16.1	68.8	10,641	69.7
2015	New Freshmen	735	636	543	543	53.2	57.3	19.3	73.9	10,020	79.0
	New Transfers	318	274	258	258	57.5	66.4	8.2	81.1	11,206	70.7
	New Non-Degree	134	31	29	29	17.9	4.5	2.2	21.6	7,694	68.7
	New Graduates	5	3	3	3	60.0	0.0	0.0	60.0	17,861	100.0
	Returning	90	54	53	53	53.3	48.9	3.3	58.9	10,932	73.7
	Continuing	2,500	1,799	1,724	1,724	48.5	50.7	19.0	69.0	10,709	75.5
	Total	3,782	2,797	2,610	2,610	49.2	51.5	17.2	69.0	10,580	75.6
2016	New Freshmen	666	585	520	520	55.1	56.5	27.9	78.1	10,905	79.4
	New Transfers	303	239	224	224	55.1	56.8	11.2	73.9	10,539	70.7
	New Non-Degree	131	39	33	33	22.9	0.8	1.5	25.2	8,448	77.3
	New Graduates	11	4	4	4	36.4	9.1	0.0	36.4	12,644	71.5
	Returning	96	54	52	52	36.5	34.4	5.2	54.2	8,548	59.5
	Continuing	2,508	1,838	1,765	1,765	49.8	47.5	20.2	70.4	11,129	74.8
	Total	3,715	2,759	2,598	2,598	49.9	47.8	19.7	69.9	10,944	75.0

* Does not include extension students.

Table 32
Intercollegiate Athletics Grants-In-Aid
2016-17

	Male	Female	Total
Baseball	183,850		183,850
Basketball	403,445	407,870	811,316
Golf		75,500	75,500
Soccer	145,370	156,073	301,443
Swimming		138,961	138,961
Tennis	92,000	139,113	231,113
Track	102,164	129,168	231,332
Volleyball		205,805	205,805
Total	926,830	1,252,490	2,179,319

* Does not include extension students.

Table 33
Current Residence of Alumni by US Region, State and Nation

		2017	
		N	%
The South	Alabama	90	0.5
	Arkansas	26	0.1
	Florida	559	3.0
	Georgia	532	2.9
	Kentucky	70	0.4
	Louisiana	54	0.3
	Mississippi	25	0.1
	North Carolina	13,025	70.4
	South Carolina	589	3.2
	Tennessee	367	2.0
	Virginia	462	2.5
	West Virginia	31	0.2
	Region Total	15,830	85.6
Mid-Atlantic	Delaware	16	0.1
	District of Columbia	60	0.3
	Maryland	182	1.0
	New Jersey	72	0.4
	New York	245	1.3
	Pennsylvania	149	0.8
	Region Total	724	3.9
New England	Connecticut	38	0.2
	Maine	16	0.1
	Massachusetts	96	0.5
	New Hampshire	24	0.1
	Rhode Island	6	0.0
	Vermont	23	0.1
Region Total	203	1.1	
Midwest	Illinois	143	0.8
	Indiana	54	0.3
	Iowa	11	0.1
	Kansas	17	0.1
	Michigan	60	0.3
	Minnesota	32	0.2
	Missouri	40	0.2
	Nebraska	7	0.0
	North Dakota	5	0.0
	Ohio	102	0.6
	South Dakota	8	0.0
Wisconsin	41	0.2	
Region Total	520	2.8	
The Southwest	Arizona	52	0.3
	New Mexico	20	0.1
	Oklahoma	21	0.1
	Texas	190	1.0
	Region Total	283	1.5

Table 33
Current Residence of Alumni by US Region, State and Nation

		2017	
		N	%
The West	Alaska	20	0.1
	California	290	1.6
	Colorado	196	1.1
	Hawaii	17	0.1
	Idaho	7	0.0
	Montana	20	0.1
	Nevada	29	0.2
	Oregon	108	0.6
	Utah	26	0.1
	Washington	123	0.7
	Wyoming	10	0.1
	Region Total	846	4.6
Territories	Puerto Rico	3	0.0
	Virgin Islands	1	0.0
	Region Total	4	0.0
International	Australia	3	0.0
	Bermuda	1	0.0
	Cameroon	1	0.0
	Canada	10	0.1
	Croatia	1	0.0
	Denmark	1	0.0
	Ecuador	3	0.0
	Egypt	2	0.0
	Finland	1	0.0
	France	3	0.0
	Germany	6	0.0
	Greece	1	0.0
	Hungary	1	0.0
	Indonesia	2	0.0
	Israel	2	0.0
	Italy	1	0.0
	Jamaica	1	0.0
	Japan	5	0.0
	Kenya	1	0.0
	Mexico	2	0.0
	Morocco	1	0.0
	Netherland Antilles	1	0.0
	Netherlands	2	0.0
	New Zealand	3	0.0
	Peru	1	0.0
	Singapore	2	0.0
	South Africa	1	0.0
	South Korea	3	0.0
	Spain	2	0.0
	Sweden	1	0.0
	Switzerland	1	0.0
	The Bahamas	1	0.0
	Turkey	3	0.0
	United Arab Emirates	1	0.0
United Kingdom	11	0.1	
Region Total	82	0.4	
Total		18,492	100.0

Table 34
Alumni by North Carolina Region and County

		2017	
		N	%
Western NC	Alleghany	6	0.0
	Ashe	14	0.1
	Avery	16	0.1
	Buncombe	5,697	43.8
	Burke	180	1.4
	Caldwell	68	0.5
	Cherokee	49	0.4
	Clay	21	0.2
	Graham	10	0.1
	Haywood	294	2.3
	Henderson	1,207	9.3
	Jackson	65	0.5
	Macon	59	0.5
	Madison	199	1.5
	McDowell	218	1.7
	Mitchell	49	0.4
	Polk	129	1.0
	Rutherford	159	1.2
	Surry	23	0.2
	Swain	26	0.2
	Transylvania	208	1.6
Watauga	55	0.4	
Wilkes	34	0.3	
Yancey	114	0.9	
	Region Total	8,900	68.4
Piedmont NC	Alamance	53	0.4
	Alexander	17	0.1
	Anson	5	0.0
	Cabarrus	96	0.7
	Caswell	10	0.1
	Catawba	136	1.0
	Chatham	90	0.7
	Cleveland	77	0.6
	Davidson	43	0.3
	Davie	28	0.2
	Durham	277	2.1
	Forsyth	322	2.5
	Franklin	19	0.1
	Gaston	135	1.0
	Granville	10	0.1
	Guilford	267	2.1
	Iredell	102	0.8
	Lee	7	0.1
	Lincoln	57	0.4
	Mecklenburg	629	4.8
	Montgomery	4	0.0
	Moore	39	0.3
	Orange	263	2.0
	Person	8	0.1
Randolph	31	0.2	
Richmond	6	0.0	

Table 34
Alumni by North Carolina Region and County

		2017	
		N	%
	Rockingham	19	0.1
	Rowan	57	0.4
	Stanly	13	0.1
	Stokes	18	0.1
	Union	112	0.9
	Vance	5	0.0
	Wake	691	5.3
	Warren	2	0.0
	Yadkin	8	0.1
	Region Total	3,656	28.1
Eastern NC	Beaufort	5	0.0
	Bladen	2	0.0
	Brunswick	28	0.2
	Carteret	25	0.2
	Chowan	9	0.1
	Columbus	3	0.0
	Craven	21	0.2
	Cumberland	38	0.3
	Currituck	4	0.0
	Dare	18	0.1
	Duplin	4	0.0
	Edgecombe	6	0.0
	Halifax	2	0.0
	Harnett	14	0.1
	Hertford	1	0.0
	Hoke	4	0.0
	Hyde	1	0.0
	Johnston	30	0.2
	Lenoir	1	0.0
	Nash	10	0.1
	New Hanover	113	0.9
	Northampton	1	0.0
	Onslow	15	0.1
	Pamlico	2	0.0
	Pasquotank	5	0.0
	Pender	13	0.1
	Pitt	50	0.4
	Robeson	2	0.0
	Sampson	7	0.1
	Scotland	2	0.0
	Washington	2	0.0
	Wayne	12	0.1
	Wilson	10	0.1
	Region Total	460	3.5
Total		13,016	100.0

Faculty and Staff

Table 35

Employees by Employment Status, Job Class, Sex and Race - Fall 2017

Job Class		Full-Time			Part-Time			Status		
		Female	Male	Subtotal	Female	Male	Subtotal	Totals		
Executive Administration	White	18	18	36	0	0	0	36		
	Black	2	1	3	0	0	0	3		
	Hispanic	1	0	1	0	0	0	1		
	Class Total	21	19	40	0	0	0	40		
Faculty	White	81	104	185	41	41	82	267		
	Black	4	9	13	1	1	2	15		
	Hispanic	6	3	9	1	2	3	12		
	Asian	10	4	14	2	1	3	17		
	Pacific Isl	1	0	1	0	0	0	1		
	Am Indian	0	1	1	0	1	1	2		
	Multi-Racial	1	0	1	0	0	0	1		
	Not Reported	0	0	0	1	4	5	5		
Class Total	103	121	224	46	50	96	320			
Professional Admin Staff	White	86	64	150	1	2	3	153		
	Black	7	7	14	0	0	0	14		
	Hispanic	2	5	7	0	0	0	7		
	Asian	1	2	3	0	0	0	3		
	Multi-Racial	3	3	6	0	0	0	6		
	Class Total	99	81	180	1	2	3	183		
Technical/Para Prof	White	36	31	67	1	0	1	68		
	Black	3	2	5	0	0	0	5		
	Hispanic	0	1	1	0	0	0	1		
	Asian	1	0	1	0	0	0	1		
	Class Total	40	34	74	1	0	1	75		
Clerical Staff & Mgrs	White	69	6	75	6	0	6	81		
	Black	5	1	6	0	0	0	6		
	Hispanic	2	0	2	0	0	0	2		
	Multi-Racial	1	0	1	0	0	0	1		
	Class Total	77	7	84	6	0	6	90		
Skilled Crafts & Mgrs	White	2	29	31	0	0	0	31		
	Black	0	1	1	0	0	0	1		
	Class Total	2	30	32	0	0	0	32		
Service/Maint & Supervisors	White	24	33	57	0	0	0	57		
	Black	4	7	11	0	0	0	11		
	Hispanic	1	1	2	0	0	0	2		
	Multi-Racial	1	0	1	0	0	0	1		
	Not Reported	2	0	2	0	0	0	2		
	Class Total	32	41	73	0	0	0	73		
Race Totals	White	316	285	601	49	43	92	693		
	Black	25	28	53	1	1	2	55		
	Hispanic	12	10	22	1	2	3	25		
	Asian	12	6	18	2	1	3	21		
	Pacific Isl	1	0	1	0	0	0	1		
	Am Indian	0	1	1	0	1	1	2		
	Multi-Racial	6	3	9	0	0	0	9		
	Not Reported	2	0	2	1	4	5	7		
	Class Total	374	333	707	54	52	106	813		
Total UNCA				374	333	707	54	52	106	813

NOTE: Does not include Arboretum employees.

Table 36

Full-time Instructional Faculty by Rank, Sex and Tenure Status
Five-Year Trend

Year	Rank	Male		Female		Total	
		N	Tenured	N	Tenured	N	Tenured
2013	Professor	41	41	17	17	58	58
	Assoc Professor	34	34	33	31	67	65
	Asst Professor	18	1	20	0	38	1
	Instructor	1	0			1	0
	Lecturer	20	0	26	0	46	0
	Research/Visiting	7	0	2	0	9	0
	Total	121	76	98	48	219	124
2014	Professor	40	40	19	19	59	59
	Assoc Professor	31	31	33	29	64	60
	Asst Professor	21	1	20	0	41	1
	Lecturer	22	0	21	0	43	0
	Research/Visiting	6	0	3	0	9	0
		Total	120	72	96	48	216
2015	Professor	41	41	20	20	61	61
	Assoc Professor	26	26	30	28	56	54
	Asst Professor	26	1	24	0	50	1
	Lecturer	23	0	22	0	45	0
	Research/Visiting	1	0	1	0	2	0
		Total	117	68	97	48	214
2016	Professor	44	43	19	19	63	62
	Assoc Professor	25	24	34	32	59	56
	Asst Professor	30	1	26	0	56	1
	Instructor			1	0	1	0
	Lecturer	20	0	21	0	41	0
	Research/Visiting	2	0			2	0
	Total	121	68	101	51	222	119
2017	Professor	51	49	19	19	70	68
	Assoc Professor	21	18	32	32	53	50
	Asst Professor	31	1	27	0	58	1
	Instructor			1	0	1	0
	Lecturer	16	0	24	0	40	0
	Research/Visiting	2	0			2	0
	Total	121	68	103	51	224	119

Table 37
Full-time Instructional Faculty with Terminal Degrees by Rank and Department
Fall 2017

Department	Professor		Associate Professor		Assistant Professor		Instructor		Lecturer		Total	
	Total N	Pct w/ TD	Total N	Pct w/ TD	Total N	Pct w/ TD	Total N	Pct w/ TD	Total N	Pct w/ TD	Total N	Pct w/ TD
Africana Studies	-	-	1	100.0	-	-	-	-	-	-	1	100.0
Art & Art History	2	100.0	6	100.0	2	100.0	-	-	3	100.0	13	100.0
Atmospheric Sci	3	100.0	1	100.0	-	-	-	-	-	-	4	100.0
Biology	5	100.0	2	100.0	1	100.0	-	-	2	0.0	10	80.0
Center for Teaching & Learning	1	100.0	-	-	-	-	-	-	-	-	1	100.0
Chemistry	3	100.0	3	100.0	2	100.0	-	-	2	100.0	10	100.0
Classics	2	100.0	1	100.0	1	100.0	-	-	1	100.0	5	100.0
Computer Science	1	100.0	1	100.0	3	100.0	-	-	2	100.0	7	100.0
Dance	-	-	-	-	1	100.0	-	-	-	-	1	100.0
Drama	2	100.0	2	100.0	-	-	-	-	1	100.0	5	100.0
Economics	2	100.0	1	100.0	3	100.0	-	-	1	0.0	7	85.7
Education	2	100.0	1	100.0	2	100.0	-	-	2	50.0	7	85.7
Engineering	2	100.0	-	-	-	-	-	-	-	-	2	100.0
Envr Studies	2	100.0	3	100.0	3	100.0	-	-	1	0.0	9	88.9
Health & Wellness	1	100.0	2	100.0	3	100.0	-	-	1	0.0	7	85.7
History	6	100.0	1	100.0	3	100.0	-	-	-	-	10	100.0
Humanities	-	-	-	-	-	-	1	0.0	3	33.3	4	25.0
Interdisciplinary Studies	2	100.0	-	-	4	100.0	-	-	-	-	6	100.0
Literature	6	100.0	4	75.0	5	100.0	-	-	3	0.0	18	77.8
MLA Program	-	-	-	-	-	-	-	-	1	100.0	1	100.0
Mass Comm	3	100.0	1	100.0	1	100.0	-	-	2	50.0	7	85.7
Mathematics	6	100.0	2	100.0	1	100.0	-	-	3	0.0	12	75.0
Mgt & Accountancy	3	100.0	4	100.0	3	100.0	-	-	2	50.0	12	91.7
Modern Languages & Literature	-	-	3	100.0	5	100.0	-	-	3	0.0	11	72.7
Music	1	100.0	3	100.0	2	100.0	-	-	3	0.0	9	66.7
New Media	-	-	3	100.0	1	100.0	-	-	3	66.7	7	85.7
Philosophy	4	100.0	-	-	1	100.0	-	-	-	-	5	100.0
Physics	3	100.0	-	-	2	100.0	-	-	1	0.0	6	83.3
Political Science	3	100.0	-	-	2	100.0	-	-	-	-	5	100.0
Psychology	2	100.0	5	100.0	3	100.0	-	-	-	-	10	100.0
Religious Studies	1	100.0	1	100.0	1	100.0	-	-	-	-	3	100.0
Soc & Anth	4	100.0	2	100.0	3	100.0	-	-	-	-	9	100.0
Total	72	100.0	53	98.1	58	100.0	1	0.0	40	40.0	224	88.4

Table 38
Full-time Instructional Faculty Salaries by Rank
Five-Year Trend

Year	Rank	N	Salary			
			Mean	Min	Max	Total Outlay
2013	Professor	58	83,306	66,035	125,148	4,831,772
	Associate Professor	67	67,849	57,483	94,211	4,545,884
	Assistant Professor	38	61,782	51,612	103,900	2,347,726
	Lecturer	46	50,888	35,045	86,582	2,340,857
	University Total	219	66,680	35,045	125,148	14,602,827
2014	Professor	59	85,306	68,035	125,148	5,033,069
	Associate Professor	64	73,068	61,786	114,711	4,676,368
	Assistant Professor	41	64,293	52,000	116,500	2,636,010
	Lecturer	43	51,857	35,608	96,202	2,229,867
	University Total	216	69,807	35,608	125,148	15,078,314
2015	Professor	61	87,764	72,035	126,898	5,353,586
	Associate Professor	56	75,947	65,083	119,989	4,253,010
	Assistant Professor	50	65,355	55,000	116,500	3,267,753
	Lecturer	45	54,482	42,000	100,091	2,451,676
	University Total	214	72,124	42,000	126,898	15,434,525
2016	Professor	63	92,943	77,674	132,945	5,855,409
	Associate Professor	59	79,881	67,268	125,759	4,712,987
	Assistant Professor	56	68,275	57,634	120,370	3,823,375
	Lecturer	41	55,877	42,000	105,612	2,290,948
	University Total	222	76,266	42,000	132,945	16,931,108
2017	Professor	70	93,407	76,189	150,000	6,538,492
	Associate Professor	53	80,031	65,954	125,759	4,241,641
	Assistant Professor	58	68,985	58,760	122,870	4,001,157
	Lecturer	40	55,685	42,000	108,390	2,227,390
	University Total	224	77,099	42,000	150,000	17,270,069

NOTE: Instructors, research and visiting professors are not shown in detail but are included in University Total

Fiscal Resources

Table 39

Current Fund Revenues and Expenditures: Five-Year Trend

Revenue Source	2012-13		2013-14		2014-15		2015-16		2016-17	
	Amount	Percent	Amount	Percent	Amount	Percent	Amount	Percent	Amount	Percent
Tuition and Fees	20,372,368	23.4	21,992,082	24.0	22,704,340	25.4	23,728,560	24.9	24,457,326	24.9
Grants and Contracts- operation	2,312,813	2.7	2,351,167	2.6	2,233,663	2.5	3,631,125	3.8	3,347,154	3.4
Sales and Services of Auxilary Ent.	9,146,429	10.5	10,149,164	11.1	10,989,850	12.3	10,988,924	11.5	11,226,554	11.4
Sales and Services of Educ. Activities	683,183	0.8	510,141	0.6	406,518	0.5	1,367,231	1.4	493,403	0.5
Other Operating Sources	1,241,425	1.4	1,519,536	1.7	1,499,086	1.7	1,708,920	1.8	1,899,866	1.9
State Appropriations	37,588,312	43.2	36,828,519	40.3	37,977,520	42.4	38,770,345	40.6	39,864,860	40.5
Grants - Nonoperating	8,625,699	9.9	8,742,041	9.6	9,108,008	10.2	9,302,491	9.7	9,262,754	9.4
Gifts	2,411,039	2.8	2,415,936	2.6	2,352,716	2.6	2,468,741	2.6	2,866,944	2.9
Investment Income	1,359,098	1.6	1,964,536	2.1	1,361,280	1.5	-90351	(0.1)	1887088.91	0.0
Other Nonoperating Revenue	902,461	1.0	888,068	1.0	520,872	0.6	804,958	0.8	519,379	0.5
Other Revenues and Additions	2,308,653	2.7	4,091,779	4.5	370,998	0.4	2,732,745	2.9	2,525,534	2.6
Total Revenues & Additions	86,951,480		91,452,969		89,524,851		95,413,689		98,350,864	
Expenses and other Deductions										
Instruction	26,255,001	30.5	26,803,191	30.1	28,017,653	31.3	29,529,807	31.6	31,752,759	32.8
Research	1,597,436	1.9	1,340,271	1.5	1,646,570	1.8	1,978,445	2.1	2,107,654	2.2
Public Service	2,023,562	2.4	1,676,563	1.9	1,745,526	1.9	1,546,722	1.7	1,668,646	1.7
Academic Support	4,510,483	5.2	4,511,200	5.1	4,313,068	4.8	4,573,308	4.9	4,590,550	4.7
Student Services	4,486,276	5.2	5,167,503	5.8	5,288,120	5.9	5,495,047	5.9	5,605,596	5.8
Institutional Support	10,623,296	12.4	11,559,232	13.0	11,727,852	13.1	11,274,810	12.1	11,870,601	12.3
Operation & Maintenance of Plant	9,900,964	11.5	9,767,241	11.0	9,214,675	10.3	9,105,193	9.8	9,233,997	9.5
Depreciation	4,953,526	5.8	5,333,499	6.0	5,079,555	5.7	5,208,173	5.6	5,341,277	5.5
Scholarships and Fellowships	5,795,800	6.7	5,985,525	6.7	5,524,937	6.2	5,797,385	6.2	5,388,874	5.6
Auxiliary Enterprises	13,660,790	15.9	14,344,592	16.1	14,673,549	16.4	16,371,167	17.5	16,293,190	16.8
Nonoperating Exp. and Deduct.	2,158,814	2.5	2,597,388	2.9	2,366,049	2.6	2,437,688	2.6	2,946,071	3.0
Total Expenses and Deductions	85,965,948		89,086,205		89,597,554		93,317,745		96,799,215	

Source: IPEDS F-1 from UNC Asheville Financial Affairs

Table 40
Operating Expenditures by Function
2016-17

	Salaries & Benefits	Supplies & Materials	Services	Scholarships & Fellowships	Utilities	Depreciation	Total
Instruction	28,805,323	1,088,560	1,858,876				31,752,759
Research	1,449,195	112,569	545,890				2,107,654
Public Service	1,255,824	69,958	342,864				1,668,646
Academic Support	3,227,694	899,477	463,379				4,590,550
Student Services	4,158,742	136,577	1,308,497		1,780		5,605,596
Institutional Support	9,750,638	156,867	1,918,334		82		11,825,921
Operations & Maintenance/Plant	6,136,098	689,512	689,945		1,718,442		9,233,997
Student Financial Aid	42,139	2,083	459	5,388,874			5,433,554
Auxiliary Enterprises	7,085,243	1,807,536	6,634,513		765,898		16,293,190
Depreciation						5,341,277	5,341,277
Total Operating Expenses	61,910,895	4,963,140	13,762,757	5,388,874	2,486,201	5,341,277	93,853,144
Percent of Total	66%	5%	15%	6%	3%	6%	100%

Source: Controller's Office (unaudited)

Table 41
Tuition and Fees per Year
Full-Time Students

	Academic Year					5-Year Increase	5-Year Pct Change
	13-14	14-15	15-16	16-17	17-18		
Undergraduate Tuition:							
In-State	3,666	3,666	3,849	4,041	4,122	456	12.4
Out-of-State	17,488	18,537	19,463	20,436	20,845	3,357	19.2
Graduate Tuition:							
In-State	4,371	4,371	4,589	4,818	4,914	543	12.4
Out-of-State	17,816	18,885	19,829	20,820	21,236	3,420	19.2
Total Fees:	2,575	2,726	2,756	2,936	3,023	448	17.4
Room (Double Occupancy):							
Founders Hall	4,522	4,658	4,658	4,890	5,134	612	13.5
Mills Hall	4,522	4,658	4,658	4,890	5,134	612	13.5
South Ridge	4,522	4,658	4,658	4,890	5,134	612	13.5
West Ridge	4,522	4,658	4,658	4,890	5,134	612	13.5
Governor's Hall	4,522	4,658	4,658	4,890	5,134	612	13.5
Overlook Hall	4,650	4,790	4,790	5,030	5,280		
Room (Single Occupancy):							
Governor's Hall	5,926	5,926	5,926	6,222	6,532	606	10.2
	6,100	6,100	6,100	6,406	6,726	626	10.3
Overlook Hall	6,100	6,100	6,100	6,406	6,726	626	10.3
Moore Hall - Year Round	7,600	7,600	7,600	7,035	8,378	778	10.2
Board:							
Meal Plan	3,334	3,674	3,674	3,856	3,972	638	19.1

Source: *Finance & Operations*

Table 42
Distance Education Tuition and Fees
Academic Year 2017-18

Tuition (per hour rate):	
Resident undergraduate	139.26
Non-resident undergraduate	704.22
Resident graduate	240.88
Non-resident graduate	1,040.98
Ed/Tech Fee per credit hour	16.55

Source: *Director of Student Accounts*

Table 43
The University of North Carolina
Tuition and Fees Applicable to All Regular Full-Time Undergraduate Students
2017-18

School	Tuition		General Fees						Debt	Total		Total
	Resident	Non-Resident	Athletics	Health	Student	Educational	Campus	Total	Service	Total	Resident	Non-Resident
				Services	Activities	& Tech.	Security					
NC State University	6,535.00	24,883.00	232.00	392.00	663.32	439.28	30.00	1,756.60	572.00	2,328.60	8,863.60	27,211.60
UNC-Chapel Hill	7,019.00	32,602.00	279.00	381.10	391.23	444.86	30.00	1,526.19	185.85	1,712.04	8,731.04	34,314.04
East Carolina University	4,452.00	20,729.00	723.00	263.00	649.00	395.00	30.00	2,060.00	460.00	2,520.00	6,972.00	23,249.00
NC A & T State University	3,540.00	16,430.00	830.00	338.50	666.50	426.31	30.00	2,291.31	588.00	2,879.31	6,419.31	19,309.31
UNC Charlotte	3,812.00	17,246.00	824.00	236.00	613.00	582.00	30.00	2,285.00	735.00	3,020.00	6,832.00	20,266.00
UNC Greensboro	4,422.00	19,581.00	739.00	293.00	513.00	433.00	30.00	2,008.00	707.00	2,715.00	7,137.00	22,296.00
Appalachian State University	4,242.00	19,049.00	760.00	325.00	646.00	576.00	30.00	2,337.00	579.00	2,916.00	7,158.00	21,965.00
Fayetteville State University	2,982.00	14,590.00	718.00	215.00	543.00	360.00	30.00	1,866.00	335.00	2,201.00	5,183.00	16,791.00
NC Central University	3,728.00	16,435.00	807.00	242.66	476.40	428.15	30.00	1,984.21	570.00	2,554.21	6,282.21	18,989.21
UNC Pembroke	3,602.00	15,193.00	739.52	175.00	653.40	422.77	30.00	2,020.69	247.00	2,267.69	5,869.69	17,460.69
UNC Wilmington	4,443.00	18,508.00	749.55	219.00	687.95	494.24	30.00	2,180.74	376.00	2,556.74	6,999.74	21,064.74
Western Carolina University	3,971.00	14,364.00	756.00	306.00	618.00	544.00	30.00	2,254.00	523.00	2,777.00	6,748.00	17,141.00
Winston-Salem State University	3,401.00	13,648.00	745.00	267.00	530.70	416.46	30.00	1,989.16	460.00	2,449.16	5,850.16	16,097.16
UNC Asheville	4,122.00	20,845.00	830.00	368.00	768.00	490.00	30.00	2,486.00	394.00	2,880.00	7,002.00	23,725.00
Elizabeth City State University	2,856.00	16,000.00	815.00	255.03	703.00	326.00	30.00	2,129.03		2,129.03	4,985.03	18,129.03
UNC School of the Arts	6,497.00	22,240.00		882.00	748.00	684.00	30.00	2,344.00		2,344.00	8,841.00	24,584.00

(1) Does not include High School

* In addition to the fees above, the Board also authorized a \$1 ASG fee which is not included in the total fees.

Source: https://www.northcarolina.edu/sites/default/files/2017-18_ug_tuition_and_fees.pdf

Table 44

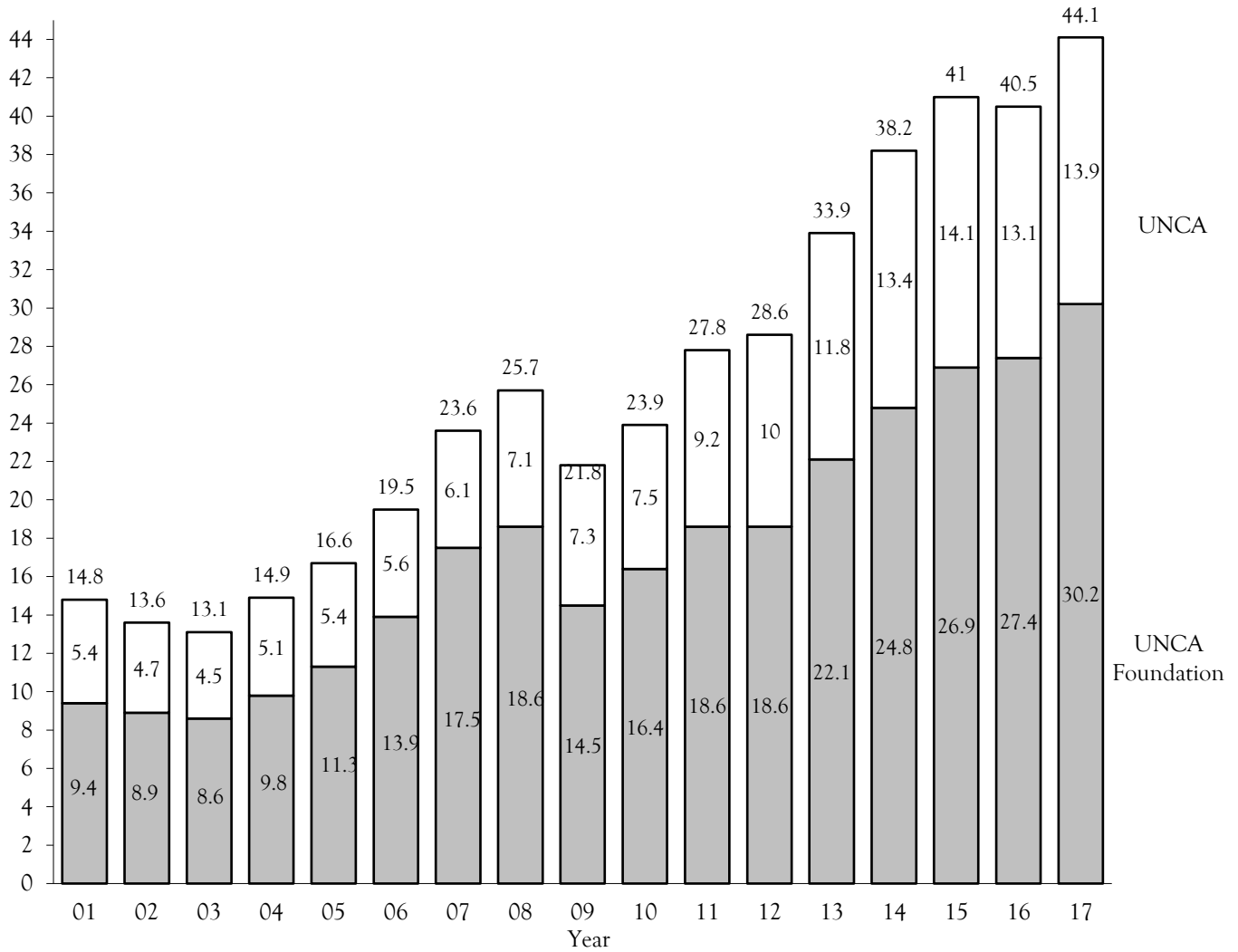
External Grants and Contracts Funding Amounts by Fiscal Year

	FY 2008	FY 2009	FY 2010	FY 2011	FY 2012	FY 2013	FY 2014	FY 2015	FY 2016	FY 2017
Total Submissions	66	44	35	35	35	42	47	44	45	83
Total Awards	37	30	18	24	19	30	34	27	30	52
Num of Different Investigators	35	24	48	42	35	39	41	50	37	57
Total Amount Awarded	\$4,563,395	\$1,990,980	\$2,706,600	\$2,953,222	\$1,323,548	\$1,685,715	\$1,466,264	\$3,996,536	\$3,331,486	\$2,068,356

Source: UNC Asheville Sponsored Scholarship and Programs

Figure 4
Endowed Funds

Amount in
Millions



Source: Controller's Office

Table 45
Source of Outright Gift Income by Year

	2010-11	2011-12	2012-13	2013-14	2014-15	2015-16	2016-17
Alumni	170,847	194,536	211,321	223,812	242,937	257,763	390,888
Parents	73,178	103,361	104,286	104,472	158,209	136,187	153,829
Other Individuals	463,515	575,259	507,162	732,094	985,311	4,081,697	2,069,554
Foundations	425,830	659,890	2,461,588	388,622	142,538	1,194,992	778,247
Corporations	1,616,114	1,848,619	690,657	354,549	1,182,415	1,065,845	2,049,032
Religious Organizations	1,800	2,200	1,450	550	1,400	3,360	4,194
Fundraising Consortia						13,640	21,218
Other Organizations	599,989	104,556	152,106	165,158	242,841	70,411	76,618
Total Giving*	3,351,273	3,488,421	4,128,570	1,969,257	2,955,651	6,823,895	5,543,580

*Deferred giving not included

Source: University Advancement

Table 46
Alumni Donations

Fiscal Year	# Alumni of Record	Number Donors	Total Giving*	Giving Rate
2005-06	10,639	599	\$142,638	5.6%
2006-07	10,990	1,044	\$265,488	9.5%
2007-08	11,578	963	\$163,500	8.3%
2008-09	12,213	891	\$179,640	7.3%
2009-10	14,213	894	\$275,461	6.3%
2010-11	15,321	1,016	\$209,641	6.6%
2011-12*	14,513	1,100	\$194,536	7.6%
2012-13	15,305	1,277	\$211,321	8.3%
2013-14	16,037	1,483	\$223,812	9.2%
2014-15	16,733	1,492	\$242,937	8.9%
2015-16	17,565	1,449	\$257,763	8.2%
2016-17	18,141	1,101	\$390,888	6.0%

Deferred giving not included

Source: *University Advancement*

* Note: 2011-12 reflects the first year of transition to reporting statistics using methodology provided by the Council for Advancement and Support of Education (CASE) per direction from UNC General Administration.

Table 47
Outright Gift Income Summary

	2011-12	2012-13	2013-14	2014-15	2015-16	2016-17
Gifts for Current Operations						
Unrestricted	182,609	289,330	160,642	177,014	267,818	239,322
Restricted						
Academic Divisions	154,604	63,557	129,648	81,984	1,646,017	1,295,705
Faculty & Staff Compensation						
Research	2,849	9,020	12,576	5,565	4,626	117,951
Public Service & Extension	171,646	38,628	37,152	73,318	151,096	1,222,000
Library	39,232	26,459	300	95	121,841	1,210
Operation and Maint. of Plant	48	26,400	18,952	38,480	9,768	
Student Financial Aid	157,484	221,814	475,444	337,794	670,930	733,350
Athletics	275,441	404,454	419,589	494,276	454,016	421,803
Other	92,164	203,838	65,006	137,830	178,440	79,660
Total Current Operations	1,076,077	1,283,500	1,319,309	1,346,356	3,504,552	3,871,679
Gifts for Capital Purposes						
Property, Building, Equipment	1,674,501	351,751	33,507	554,407	77,084	29,718
Endowment - Unrestricted						
Endowment - Restricted	734,243	2,493,319	612,293	1,048,570	3,235,509	1,396,111
Loan Funds	3,600		4,148	6,318	6,750	6,750
Total Capital Purposes	2,412,344	2,845,070	649,948	1,609,295	3,319,343	1,432,579
Total Outright Giving	3,488,421	4,128,570	1,969,257	2,955,651	6,823,895	5,543,580

Source: *University Advancement*

Table 48
Building Inventory
Fall 2017

	Year Constructed	Building Cost	Replacement Cost	Accessible (Sq. Ft.)	Assignable (Sq. Ft.)	Gross (Sq. Ft.)
<i>Academic and Administrative</i>						
Brown Hall	1995	4,290,000	18,526,082	26,359	26,359	60,792
Carmichael/Hum Lecture H	1966	548,000	8,603,050	18,019	18,019	31,441
Carol Belk Theatre	1976	477,000	3,265,347	7,761	7,761	10,715
Highsmith Union	2004	15,800,000	22,526,780	53,936	53,936	73,920
Hyannis House	1977	109,154	256,161	1,828	1,828	2,151
Justice Center	1963	1,205,732	15,779,717	15,855	35,919	51,780
Karl Strauss Track Building	2015	1,532,887	1,025,042	1,712	1,712	2,014
Karpen Hall	1990	5,600,000	17,512,013	34,024	34,024	64,000
Lipinsky Hall	1964	791,758	11,797,609	21,516	21,516	38,173
Lookout Observatory	2013	575,530	420,244	969	969	1,379
Owen Hall	1979	1,809,259	12,960,531	28,879	28,879	47,366
Phillips Hall	1963	493,800	5,082,314	8,730	12,752	18,574
Ramsey Library	1965	685,637	18,925,850	35,608	35,608	47,641
Ramsey Library (New Wing)	1990	6,400,000	22,080,157	43,800	43,800	55,926
Reuter Center	2003	3,900,000	5,357,581	13,752	13,752	19,580
Rhoades/Robinson/Rhoades Tower	1961	7,692,636	42,922,354	65,408	65,408	105,358
River Arts Mkr Place	2016		2,000,000	8,521	8,521	11,575
Riverside Warehouse	1995	400,000	4,999,397	20,525	20,525	20,525
Sam Millar Facilities Complex	2007	5,559,215	6,737,069	21,134	21,134	27,659
Sherrill Center (includes garage)	2011	35,000,000	39,370,400			119,012
Soccer Fieldhouse	2003	289,415	413,540	1,153	1,153	1,357
Student Recreation Center	1997	6,075,600	16,151,506	44,423	44,501	53,000
Vance Hall	1967	94,000	1,155,246	2,164	2,164	4,222
Weizenblatt Hall	1972	191,000	1,990,897	3,742	2,498	7,274
West Ridge Parking Deck	1999	2,474,697	3,293,160	70,200	70,200	70,200
Whitesides Hall	2006	5,500,000	8,716,331	17,211	17,211	31,855
WT Weaver Bldg	1992	4,802,000	8,364,707	10,286	10,286	22,600
Zageir Hall	1975	1,130,000	8,491,958	18,365	18,365	31,035
Zageir Parking Deck	2001	842,600	1,353,189	28,000	28,000	28,000
Zeis Hall	2008	22,000,000	41,966,588	45,257	45,257	86,145
<i>Residential</i>						
25 Hyannis	1975	133,990	292,410	1,428	1,428	1,680
40 RELIC	1984	65,000	185,724	864	864	1,016
48 RELIC	1975		163,443	925	925	1,088
Ashe Hall	1969	132,670	1,925,034	0	4,619	6,900
Brumit Pisgah House (Chancellor's Residence)	2010	2,400,000	2,075,689	6,333	6,333	7,440
Founders Hall	1982	2,943,027	17,776,989	42,668	42,668	63,719
Gardner Hall	1967	146,000	1,841,337	168	4,006	6,600
Governors Hall	2003	11,500,000	16,613,878	36,098	36,098	59,550
Hoey Hall	1969	132,670	1,925,034	0	4,595	6,900
Merrimon Rhoades	1925	300,000	1,576,296	3,612	3,612	4,249
Mills Hall	1987	4,250,000	18,089,738	41,877	41,877	64,840
Moore Hall	1967	146,000	1,841,337	0	4,158	6,600
Overlook Hall	2012	20,028,926	27,726,345	50,509	50,509	99,381
Scott Hall	1967	146,000	1,841,337	792	4,090	6,600
South Ridge Hall	1994	3,950,000	11,168,544	22,354	22,354	40,032
West Ridge Hall	1999	7,600,000	13,786,869	28,711	28,711	49,417

Source: Facilities Inventory Database/QryFactBook_BldgInv

Table 49
 Percentage of General Purpose Classrooms Utilized by Day and Time
 Fall 2014*

Time	Percent of Classrooms in Use				
	Mon	Tue	Wed	Thu	Fri
08:00-09:00	66.1	33.9	73.2	28.6	53.6
09:00-10:00	37.5	77.7	39.3	78.5	30.4
10:00-11:00	85.7	61.5	96.4	60.5	71.4
11:00-12:00	63.6	63.4	72.7	63.4	64.2
12:00-01:00	53.5	1.8	50.0	1.8	44.6
01:00-02:00	85.7	66.1	91.1	64.3	58.9
02:00-03:00	36.6	27.7	38.4	26.8	19.6
03:00-04:00	61.6	62.5	61.6	64.3	28.6
04:00-05:00	44.4	43.5	47.6	45.1	19.0
05:00-06:00	16.1	12.5	17.9	9.8	8.9
06:00-07:00	25.4	28.6	15.8	22.3	0.0
07:00-08:00	20.2	19.6	11.6	16.1	0.0
08:00-09:00	11.6	6.3	6.3	5.4	0.0
09:00-10:00	3.6	0.9	0.9	0.9	0.0

* NOTE: Data published by UNC-GA, approximately 3 years behind.

Table 50

Classrooms and Labs by Building
Fall 2017

	Classrooms				Class Labs				Open Labs			
	N	Capacity			N	Capacity			N	Capacity		
	Rms	Min	Mean	Max	Rms	Min	Mean	Max	Rms	Min	Mean	Max
Carmichael/Hum Lecture H	8	45	45.0	45					4	1	6.0	16
Carol Belk Theatre									2	24	24.5	25
Karpen Hall	19	0	26.7	78	2	18	32.5	47	2	20	20.0	20
Lipinsky Hall					2	30	52.5	75	17	1	6.6	16
Owen Hall	6	25	38.8	50	5	4	15.4	25	7	2	9.3	16
River Arts Mkr Place					1	1	1.0	1				
Ramsey Library (New Wing)									2	10	16.0	22
Rhoades/Robinson/Rhoades T	11	16	45.2	174	6	12	19.0	25	23	2	15.2	30
Sherrill Center (includes garage	5	38	43.8	53					7	2	13.4	37
West Ridge Hall									2	1	1.0	1
Whitesides Hall	8	23	28.5	43	2	20	34.5	49	1	20	20.0	20
Zageir Hall	10	19	25.8	36	1	25	25.0	25	1	26	26.0	26
Zeis Hall	3	34	37.7	40	6	12	20.0	24	17	4	14.0	24
Total	70	0	34.5	174	25	1	23.0	75	85	1	12.4	37

Table 51

Residence Hall Capacity and Number of Students Housed

Residence Hall	2014			2015			2016			2017		
	Normal Capacity	Number Housed	Pct of Cap	Normal Capacity	Number Housed	Pct of Cap	Normal Capacity	Number Housed	Pct of Cap	Normal Capacity	Number Housed	Pct of Cap
Ashe Hall	20	20	100.0	20	20	100.0	20	20	100.0	20	20	100.0
Founders Hall	287	295	102.8	287	294	102.4	287	278	96.9	287	279	97.2
Gardner Hall	20	20	100.0	20	20	100.0	20	20	100.0	20	20	100.0
Governors Hall	166	179	107.8	161	175	108.7	161	170	105.6	161	169	105.0
Hoey Hall	20	20	100.0	20	20	100.0	20	19	95.0	20	20	100.0
Mills Hall	284	290	102.1	284	291	102.5	284	283	99.6	284	275	96.8
Moore Hall	20	20	100.0	20	20	100.0	20	19	95.0	20	19	95.0
Overlook Hall	288	302	104.9	288	305	105.9	288	287	99.7	288	284	98.6
Scott Hall	20	20	100.0	20	18	90.0	20	19	95.0	20	20	100.0
South Ridge Hall	107	116	108.4	107	118	110.3	107	112	104.7	107	107	100.0
West Ridge Hall	139	142	102.2	139	144	103.6	139	133	95.7	139	137	98.6
Total Students	1,371	1,424	103.9	1,366	1,425	104.3	1,366	1,360	99.6	1,366	1,350	98.8

Table 52
Capital Improvements: 2017-18

		Est. Cost	Est. Completion Date Project Lgth. (Constr. Period)
A.	Recently Completed Projects		
	1. STEAM at RAMP	1,310,000	August 2016
	2. Mills Hall Renovation	1,700,000	August 2017
	3. Philips Hall Parking Enhancements	425,000	February 2017
B.	Projects Under Construction		
	1. New Residence Hall	33,795,000	August 2018
	2. Renovation of Highsmith Union	12,430,000	August 2018
C.	Projects in Design - Funds Allocated		
	1 Owen Hall Renovation	15,100,000	August 2020
	2 Carmichael Renovation	6,000,000	August 2019
D.	Project in Planning - Awaiting Construction Funding		
	1. Renovation of Reed Plaza	971,181	November 2018
	2. Belk Theatre Catwalk and Lighting Renovation	550,000	December 2018
E.	Future Capital Projects - Currently Unfunded		
	1. Justice Center Renovation	24,039,958	
	2. Lipinsky Hall Renovation	21,309,560	

Table 53
Ramsey Library Resources: Five-Year Trend

	2013	2014	2015	2016	2017
Books, Serial Files, Gov. Docs.	333,113	316,918	304,521	282,040	279,970
Current Serial Subscriptions	70,505	151,496	101,163	187	199
Microforms ¹	8,097	8,079	3,412	759	420
eBooks	215,237	468,793	499,940	539,250	670,018
eJournals ²	70,295	151,271	101,050	48,748	76,919
Audiovisual Materials (dvds, audio cds, vhs)	7,907	7,520	7,796	7,924	7,879
Streaming Videos ³		18,643	20,317	21,455	21,711

NOTES:

¹ Microforms total includes withdrawal of over 36,000 microforms during 2011 FY.

² eJournals drop in 2015, because switched from NCLive to ProQuest (total is from EBSCO A to Z)

³ Added streaming videos during 2014 FY since they are more and more and dvd, cds are less.

SOURCE: Ramsey Library

History and Governance

History of UNC Asheville

- 1927 Founded as Buncombe County Junior College under the aegis of the Buncombe County public school system
- 1930 Merged with College of the City of Asheville; name changed to Biltmore Junior College
- 1936 Name changed to Asheville-Biltmore College and control passed to the Asheville City School Board
- 1957 Became first institution to qualify as a state-supported community college
- 1961 Institution moved to present location in North Asheville. First black student enrolled
- 1963 Asheville-Biltmore College became a state-supported senior college under a new board of trustees
- 1966 First baccalaureate degrees awarded
- 1969 Asheville-Biltmore College became the University of North Carolina at Asheville, one of six campuses of the Consolidated University
- 1972 The 10 remaining state-supported senior institutions were merged into a unified 16 member system, The University of North Carolina
- 1991 First master's degrees awarded in Liberal Arts
- 1992 Designated as a Liberal Arts I College by the UNC Board of Governors

Chief Executive Officers

1927-1932	S.B. Conley, Dean
1932-1936	A.C. Reynolds, President
1936-1941	Charles A. Lloyd, Dean
1941-1945	J.J. Stevenson, Dean
1945-1946	William H. Morgan, Dean
1946-1947	Clarence N. Gilbert, Dean
1947	R.A. Tomberlin, President
1947-1962	Glenn L. Bushey, President
1962-1969	William E. Highsmith, President
1969-1977	William E. Highsmith, Chancellor
1977	Arnold K. King, Acting Chancellor
1977-1984	William E. Highsmith, Chancellor
1984-1990	David G. Brown, Chancellor
1990-1991	Roy Carroll, Interim Chancellor
1991-1993	Samuel Schuman, Chancellor
1994	Larry Wilson, Interim Chancellor
1994-1999	Patsy Reed, Chancellor
1999-2005	James H. Mullen, Jr., Chancellor
2005 -2014	Anne Ponder, Chancellor
2014	Doug Orr, Interim Chancellor
2015-	Mary Grant

Source: Chancellor's Office

UNC ASHEVILLE MISSION STATEMENT

VISION

UNC Asheville students, within a diverse and inclusive community, experience liberal arts education at its best.

MISSION

UNC Asheville is distinctive in the UNC system as its designated liberal arts university. Our practice of the liberal arts emphasizes the centrality of learning and discovery through exemplary teaching, innovative scholarship, creative expression, co-curricular activities, undergraduate research, engaged service, and practical experience. UNC Asheville is primarily undergraduate, with all programs of study leading to the bachelor's degree, with the exceptions of teacher licensure programs and the master's degree in Liberal Arts and Sciences (MLAS). UNC Asheville offers a liberal arts education characterized by high quality faculty-student interaction. We offer this challenging educational experience to all promising students who are committed to liberal learning and personal growth.

Our liberal arts educational approach emphasizes life skills including critical thinking, clear and thoughtful expression, and honest open inquiry. Students undertake concentrated study in one area while simultaneously developing an understanding of the connections among disciplines. We encourage students to clarify, develop and live their own values while respecting the views and beliefs of others. In addition we cultivate an understanding of the dimensions of human diversity while recognizing the common humanity of all. We believe a quality liberal arts education enables our graduates to be lifelong learners and to lead successful, flourishing lives as leaders and contributors to their communities.

At UNC Asheville, we respond to the conditions and concerns of the contemporary world both as individuals and as a university. We incorporate economic, social and environmental sustainability into our institutional practices and curriculum. With a range of associated centers, partnerships, and initiatives, we fulfill our public responsibility to address the needs of our community through a continuum of learning. We develop a commitment to continuing service characterized by an informed, responsible, and creative engagement with the Asheville area, the southern Appalachian region, the state of North Carolina, and a diverse and increasingly connected world.

Approved by UNC Board of Governors - February 21, 2014

UNC Asheville Board of Trustees
2017-18

<i>Member</i>	<i>Business</i>	<i>Home City</i>	<i>Term Expires</i>
Kennon Briggs <i>Chair</i>	Retired	Leland	2021 (Term 2)
Rick Lutovsky <i>Vice Chair</i>	Retired	Asheville	2019 (Term 1)
Wilma Sherrill <i>Secretary</i>	Retired	Asheville	2019 (Term 1)
King Prather	Blue Cross Blue Shield NC	Cary	2019 (Term 2)
JW Davis	Bison Investments, Inc.	Asheville	2021 (Term 2)
Bob Long, Jr.	Long, Parker, Warren, Anderson & Payne	Asheville	2019 (Term 1)
Timothy Hussey	SGA President	Greenville Nc	2018
Karen Keil Brown	Pink Dog Creative	Asheville	2021 (Term 1)
Ron Paulus, M.D.	Mission Health	Asheville	2021 (Term 2)
Robby Russell	PNC Bank	Asheville	2019 (Term 1)
Jim Peterson	Retired	Asheville	2021 (Term 1)
Cissie Stevens	Retired	Asheville	2021 (Term 1)
Oscar Wong	Highland Brewing Company	Asheville	2019 (Term 1)

Last update: 10/20/2017
Source: Chancellor's Office

UNC Asheville Foundation Board
Fall 2017

<i>Member</i>	<i>Home City</i>	<i>Term Expires</i>
Leslie McCullough Casse Chair	Asheville	2019 (Term 2)
Himanshu Karvir Vice Chair	Asheville	2019 (Term 2)
Derek Allen	Asheville	2017 (Term 1)
Tiffany Armstrong	Asheville	2019 (Term 1)
Amy Bibby	Asheville	2019 (Term 1)
Brad Blackburn	Asheville	2018 (Term 2)
Courtney Blossman	Asheville	2017 (Term 1)
Brion “Jack” Bolton	Asheville	2019 (Term 2)
Pat Carver	Asheville	2017 (Term 2)
Kerry Friedman	Asheville	2017 (Term 2)
Patrick Chitwood	Asheville	2017
Brian Gompers	Asheville	2018 (Term 2)
Michael E. Greene	Asheville	2017
Vijay Kapoor	Asheville	2019 (Term 1)
Ben Lewis	Asheville	2017
Lakesha McDay	Asheville	2017
George Morosani	Asheville	2019 (Term 1)
Charlie White SGA President	Asheville	2017
Sue McClinton	Asheville	2019 (Term 1)
Tom Oreck	Asheville	2017 (Term 1)

UNCA Foundation Board
(Continued)

<i>Member</i>	<i>Home City</i>	<i>Term Expires</i>
William Sederburg	Biltmore Lake	2019 (Term 2)
William (Bill) Smith	Biltmore Lake	2018 (Term 1)
Brandon Wallace	Asheville	2018 (Term 1)
Mitchell Watson	Asheville	2018 (Term 2)
Kevin Westmoreland	Asheville	2019 (Term 1)
Ann Young	Asheville	2017 (Term 2)
Jane Swafford	Hendersonville	2019 (Term 1)
David Worley	Asheville	2019 (Term 1)

Ex-Officio:

Mary K. Grant
Chancellor

Carla Willis
Executive Director, UNC Asheville Foundation
Vice Chancellor for University Advancement

John Pierce
Vice Chancellor for Finance & Campus Operations
Treasurer, UNC Asheville Foundation Board

Patrick Bahls, Honors Director <i>Faculty Representative</i>	Asheville	2019
-----------------------------------------------------------------	-----------	------

Melodie Galloway, Associate Professor <i>Faculty Representative</i>	Asheville	2018
------------------------------------------------------------------------	-----------	------

Robert Tynes, Professor <i>Faculty Representative</i>	Asheville	2017
----------------------------------------------------------	-----------	------

UNC Asheville National Alumni Advisory Council
2017-18

Benjamin Alexander (2010)	Asheville NC
Beverly Rudolph (1988)	Chapel Hill NC
C. Thomas Steele (1984)	Burlington NC
Edward Sheary (1975)	Weaverville NC
Glynis Holloway (1975)	Mint Hill NC
Holly Bunting (2000)	Washington DC
Jeremy Shrader (2003)	Greensboro NC
John Noor (2007)	Asheville NC
Josh Tan (1997)	Winston-Salem NC
Katherine Rozycki (2007)	Charlotte NC
Kenya Edwards (2000)	Atlanta GA
Kristen Lawson (2014)	Boston MA
Laura Taylor (1988)	Asheville NC
Michael Roach (2002)	Wake Forest NC
Paul Beaton (2002)	Washington DC
Richard Davis (1993)	Asheville NC
Tara Irby (1993)	Biltmore Lake NC

Ex-Officios:

Laura Herndon

Associate Vice Chancellor, Alumni Relations & Annual Giving

Asheville, NC